

# m i n h w a

exhibition on paper

nina chang

**korean art**  
minhwa

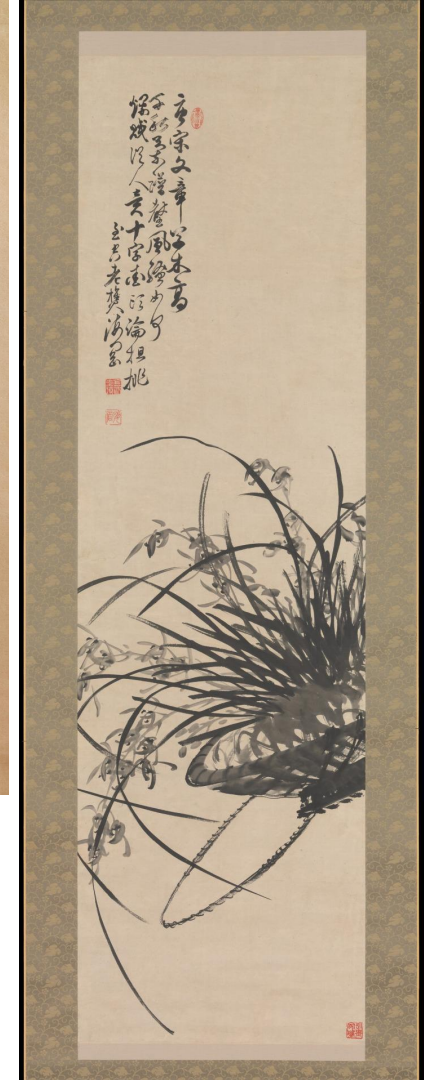
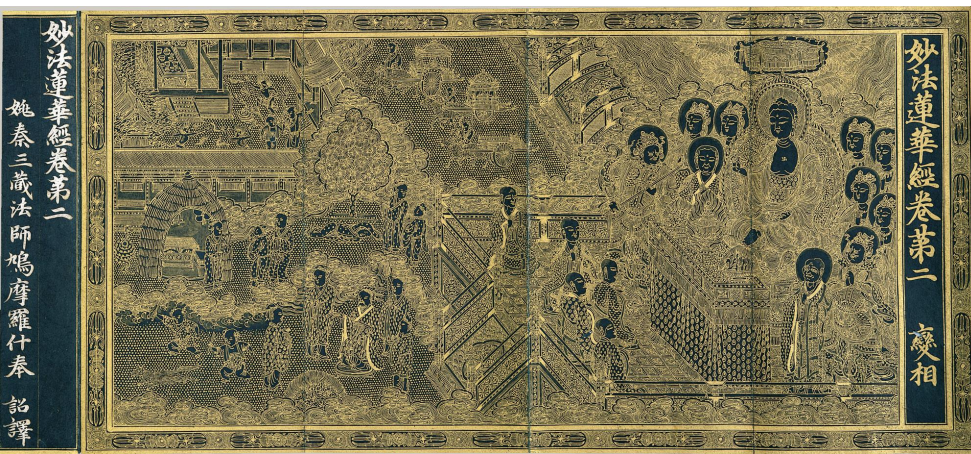
How does traditional minhwa painting differ from modern minhwa?

Has the modernization of minhwa altered traditional symbolic depictions?





korean art  
minhwa





Sun, Moon, And Five Peaks (태양, 달, 그리고 다섯 봉우리), 19th century (Joseon Dynasty), Korea.





"Ten Longevity Symbols," 18th century, Korea (Private Collection)



crane symbolism

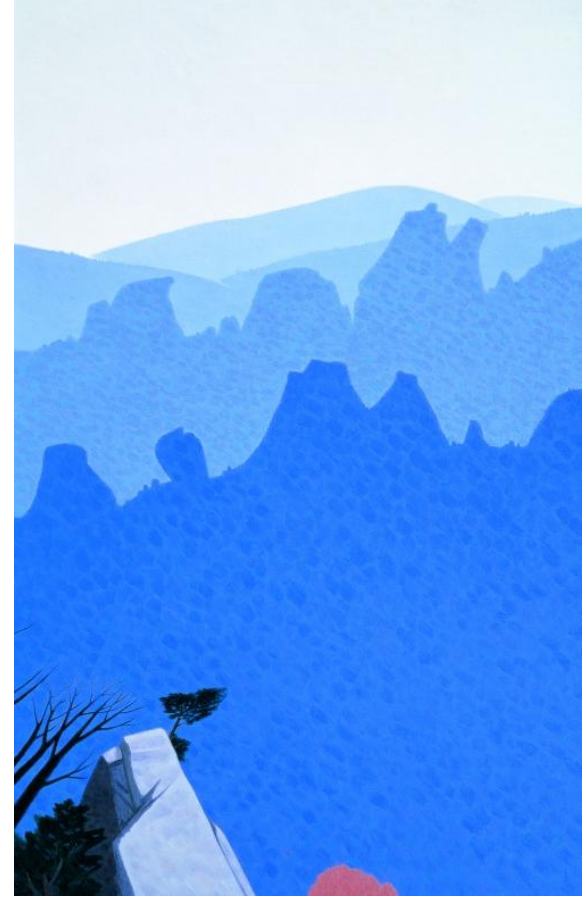
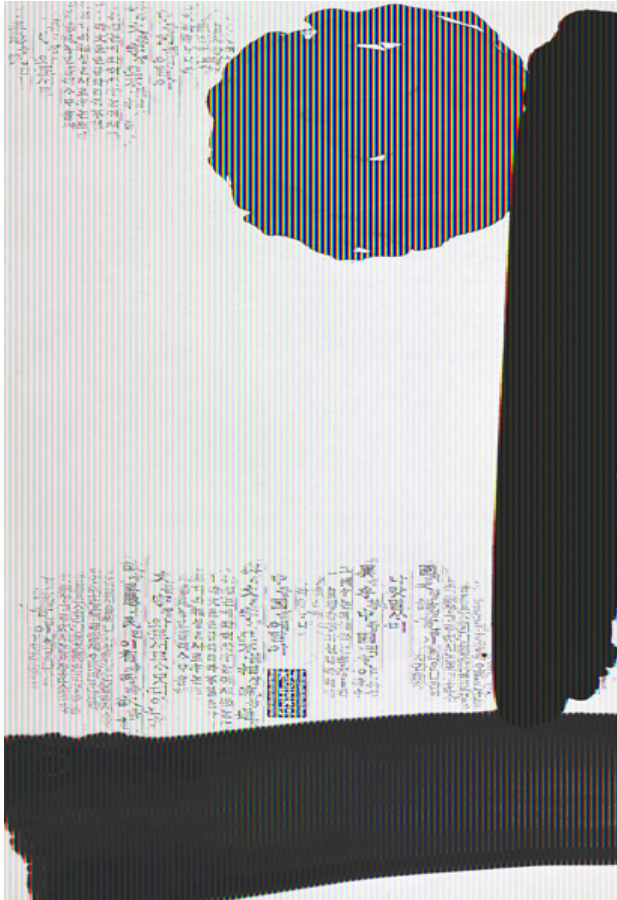
Why is the crane so significant in East Asian culture?

In what ways can this representation of purity be altered?





Heaven, Earth, and Man. Jung Do-jun, 2006. University of Oregon Jordan Schnitzer Museum of Art.



Mt. Seorak, Kim Yung-zai (1995). Daegu Art Museum.



Bodhidharma. Jungwang. 1981. Asian Art Museum of San Francisco.



A Bird. Kim In-sook, 1996. National Museum of Modern and Contemporary Art, Korea.

