

Guardian of the Amazon: Deforestation

Ryuku Otsuka
AMT 17.3.21



Concept

180x 181 cm in total

Our generation is the turning point where we have to take environmental issues seriously. It is frightening to think that an enormous hectares of forests are converting to desert, causing a rapid increase in temperature. My senior thesis expresses fear of such a future, envisualizing the story of Laércio Guajajara, the leader of a guerilla in the rainforest, and the situation of the Amazon rainforest. The group of people coming from the tribe faces a violent fight against loggers daily, and they risk their life by the cause. From an economical perspective, the Amazon forest is rich in resources that the people can live off from the medical plants, fruits, and traditional products by the Amazon tribes without degrading what they have. Illegal logging (especially when they use industrial machines) is a huge problem that would not only risk the life of the forest, but also risk the whole balance of the planet. Massive logging and converting the land to agricultural use has damaged the forest, resulting to severe wild fire damages. In 2019, 3500 square miles of the forest has been lost due to the fire, and 8000 square miles more the following year. It is obvious that such a business strategy wouldn't last long considering they are consuming limited resources. It deserves to have the same notoriety and controversy as the oil and gas business.

The animals in the drawing except for the Boa Constructor and Hoatzin are endangered, due to the destruction of their habitats in the forest. Some species such as the Hoatzins are an extremely rare genus that there is no other subfamily of the kind. The unique but beautiful flowers and plants specifically come from this rainforest, and in fact, we somehow profit from them already through the medium such as foliage plants and cacao. I was inspired by the volume of Henri Rousseau and the detail of Jakuchu Ito in the creation of this work. The choice of paper is to give an identity of my origin.

However, all of the motif research comes from random website on the internet. This work also expresses the information gap between each website. If you look up endangered animal on the Amazon rainforest, perhaps you will receive different results.



Story of this project

First Semester: Confusion towards art

Research on internet phenomenon. "Rabbit Hole" <= This links to my project as the core reference of this project is a Youtube video.

: **Art can be confusing.** Rather the idea of the object is more important than the aesthetic in contemporary art, which the idea doesn't necessary fully communicate in visualization.



Guardians of the Amazon (Full Documentary) on Youtube.
Published by ABC News.

Research of deforestation

- L.S., Hamilton, and Pearce A.J. Deforestation: Social Dynamics in Watersheds and Mountain Ecosystem. New York: Routledge, 2019. <- How deforestation can happen. Scientifically explained.

- Motif research to express the concept of deforestation.

Research of Internet phenomenon

- Watkins, Ali and Andy Mills, "Seven: 'Where We Go One,'" Interview by Kevin Roose. 16 April 2020. Rabbit Hole.

- Orłowski, Jeff. The Social Dilemma. Netflix.

- Experiment on Youtube algorithm.

Research Paper:
The Facts in Cyberland Vs Reality
The Information Gap from Scholarly Books to 'Quality' Youtube Videos

Summery:

This paper examines the gap of the information between Youtube videos in diffierent language. After knowing the QAnon movement and how the information that we receive nowadays is not always reliable, it gives entirely different understanding on the information on the internet.

The method of researching motifs

- Research based on the internet. Whatever it mentioned on internet are included on the piece.

Example:

Reseaching endangered animals on September 2020

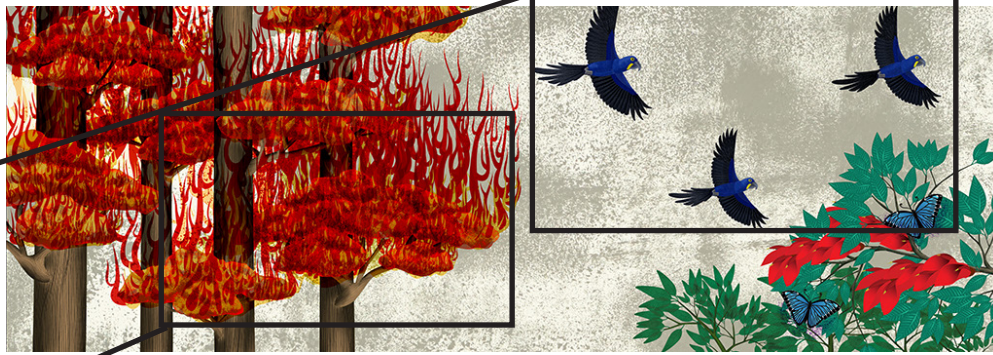
"10 Endangered Species of Amazon Rainforest Wildlife"

- In fact, Malwarebytes browser guard blocked the website on March 2021.

... Even if it is hard to believe what is on the internet, it is the information that we receive.

Hyacinth Macaw

Critically endangered
Population: 6,500 in wild



Burning tree

3500 square meter in 2019, 8000 square meter in 2020 are burned.

Hoatzin

species without any other subfamily. They will disappear if the rainforest is gone.



Cacao Tree

Cacao tree is native in South America. One fruit contains 20 50 40 beans, and it requires about 400 beans to produce one pound of chocolate.



South American Tapir

Population: 5,000



Giant Otter

population: 5,000

Giant Lotus

Giant lotus is native in South America, and it has been used as a Buddhist motif. It symbolizes purity, enlightenment, self-regeneration and rebirth.



Bald-headed Uakari

Vulnerable species that had been endangered few times in past 40 years



Cuckstar Coral

This tree symbolizes bravery in Argentina, as it is also the national tree.

Boa Constructor

Boa Constructor is a snake about 2 to 3 m long, native in South America. It symbolizes transformation as it sheds their skin.

Laercio Guajajara

The leader of tribe reference: Guardians of the Amazon(Full Documentary) on Youtube

Heliconia

Heliconia species are used for foliage flower. It is also native in South American land.

Jaguar

Population: 10,000



Blue Morpho

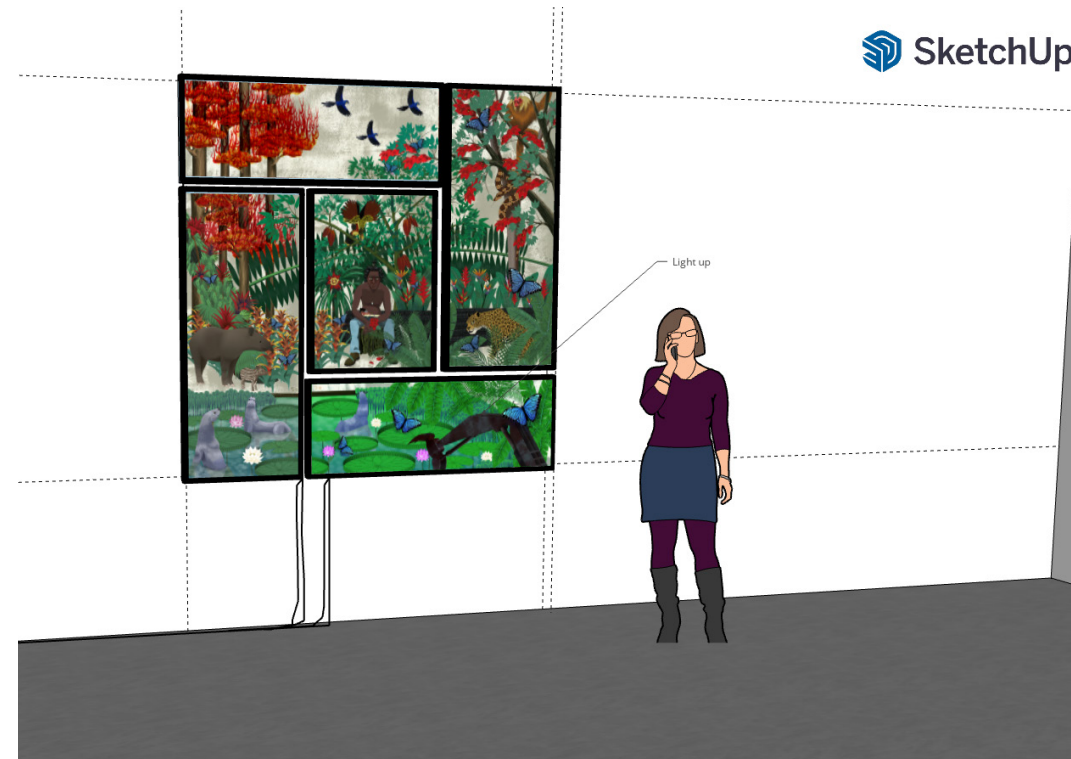
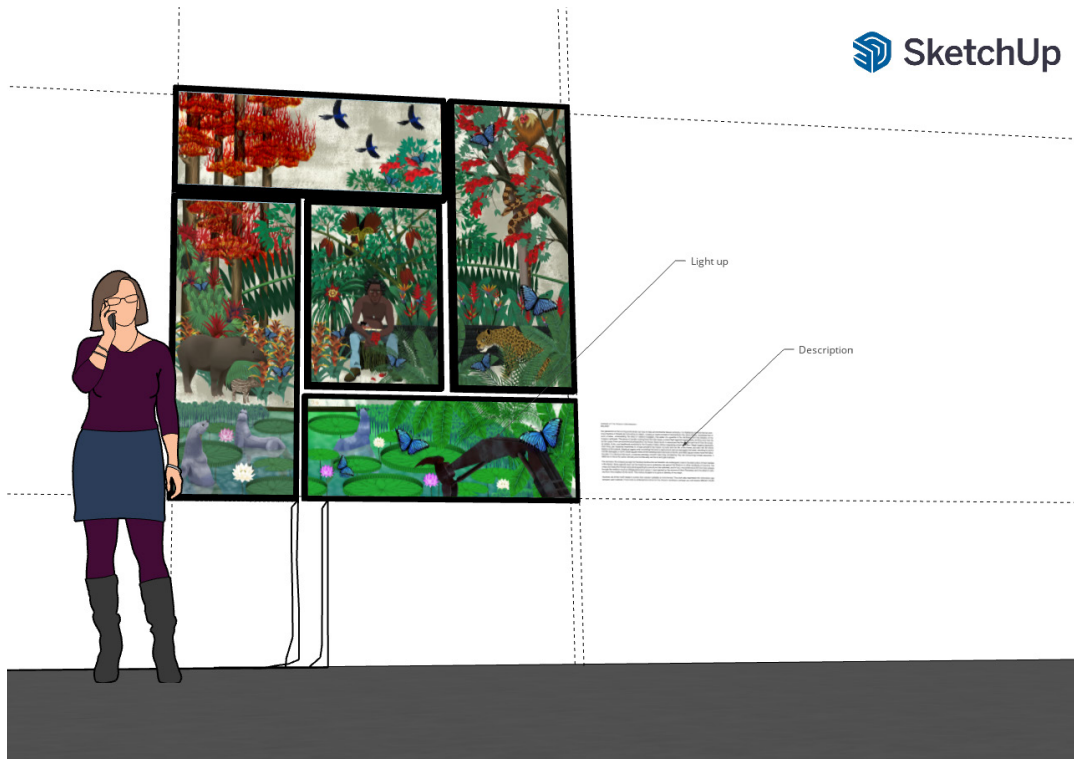
Many culture symbolizes butterfly as our soul. In Christianity, it symbolizes resurrection.

Industrial Machine

One of the reason for deforestation.



Visualization



Having description of the concept will help audience to understand the core meaning of this project.
The question is, if it is necessary to have paragraphs so that people can understand them.

Process

Finalization of Illustration / Paper

By repeating this method, it took about five months to create the entire image, including the research. Once the illustration is finalized, it was time to create the frame. The paper is Unryu 55g of Awagami Factory, the Japanese paper company which produces traditional Japanese paper. Unryu is an especially unique paper made from tsubaki trees. The choice of this particular paper is meant to create another layer of texture, and also the expression of Japanese culture.



Requirement of installation

- Four electronic plugs
- Things to fix it on the wall.

