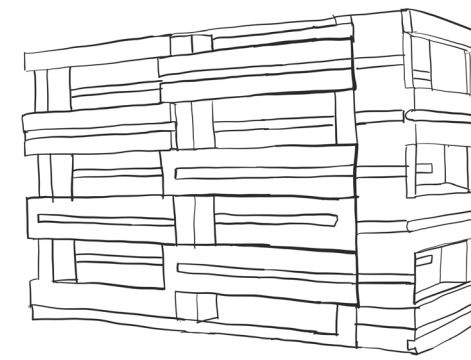


STRUCTURE

The construction of the houses take into consideration weather and potential animal damage as well as an elevated base to prevent flooding



2 different sizes of house
Small: 6' x 8' (Sleeps 1 person)
Large: 9' x 9' (Sleeps 2-3 people)

The first Reclamation Village will offer 25 small and 3 large structures, housing 31-34 people.

9

GOVERNANCE

Guidelines for Success

- 1) Safety towards yourself and others
- 2) Keep a drug and substance abuse free environment
- 3) Respect the personal property of others
- 4) Strive to become part of the community by contributing to the upkeep and welfare of the village.
- 5) Speak kindly and respectfully to interact with others and create a peaceful village.

The people of Reclamation Village elect a resident to be their mayor as well as other residents for leadership positions to maintain additional community components as needed.

Components

- 1) Organization of donations: food, material goods and recycled plastic
- 2) Maintenance: bathrooms, village grounds, community structures
- 3) Harvesting of food
- 4) Running plastic fabrication machines, and overseeing construction

Reclamation Village is meant to be a temporary housing solution, but the amount of time a resident stays depends greatly on his or her Success Plan. Residents are welcome to stay as long as they are actively meeting goals and progressing through their individualized Success Plans.

10

SUCCESS PLAN

Step 1) Rest and Regroup

The first 1-2 weeks in Reclamation Village will be at a time of rest and regrouping. Activities will include unpacking and setting up the space, getting to know other residents, and resting. Residents will also meet their Success Team to begin the process of applying for temporary assistance with food and healthcare. During the end of this period members will meet with their success team to establish that their government aid is up to date and in order i.e. EBT/WIC, ID, healthcare, etc.

2.

3.

Step Two: Make a plan

After a period of rest, residents now meet with their Success Teams to create personalized Success Plans. These plans include goals to help the resident become self sufficient. Success Plans include a strict timeline and a well detailed but also well supported plan for achieving these goals.

Step Three: Follow-up and Reassess

Residents will meet with their Success Teams weekly to follow-up on the goals set in the success plans. Sometimes, residents will need to reassess their goals and make appropriate changes to stay on track. The purpose of Reclamation Village's support team is to guide each resident toward the goal of self-sufficiency. That support may be in finding permanent housing, securing employment, applying to educational or vocational programs, or exploring interests and opportunities to match them up and create goals that are achievable and beneficial.

11

12

WHAT ALREADY EXISTS AND WHY IT DOESN'T WORK

Challenges with Homeless Shelters

- Lack of available beds
- Separation of family members
- Staff assumptions about drug use
- Danger of theft
- Religious differences
- Lack of privacy
- Rules that unfairly endanger disabled individuals
- Denied entry due to mental illness
- Fear of contracting a disease
- Strict operation hours
- Danger of rape or assault
- An invasive check-in process
- Lack of handicapped accommodations
- Hotspots for drug activity

By creating a community

instead of an inconsistent system we are designing a space where many of these things can be avoided.

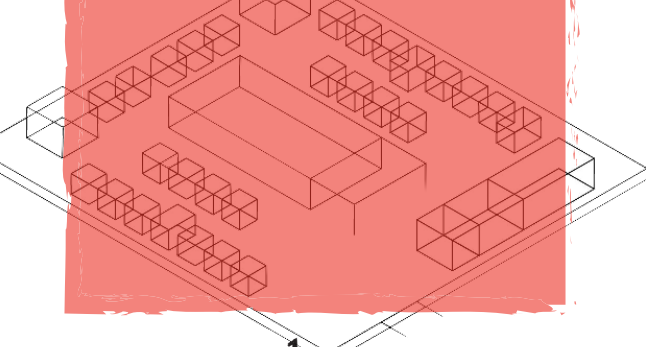
13

CONCEPT

Reclamation Village is a cross between a transitional housing option and an intentional community for individuals experiencing temporary homelessness.

The houses of Reclamation Village are constructed out of recycled plastic.

We are using what we have to create what we need.



1

RECLAMATION VILLAGE

Laney Flood, Camelia Chorsi and Stephanie Bloodworth

STAKEHOLDERS



Reclamation Village relies heavily on donors and benefactors for funding in order to operate.



We will also consider partnerships with waste management and recycling centers to get donations of plastic.



We look forward to working with groups such as Low Income Housing Institute, National Alliance to End Homelessness, and other similar organizations for further services in the future.

3

LAND AND SUPPORT

Our first Village will be in Brooklyn, New York



We will lease vacated lots with money raised or land will be donated to us to establish Reclamation Village. Another option is finding a temporary land use partnership

4

OPERATION



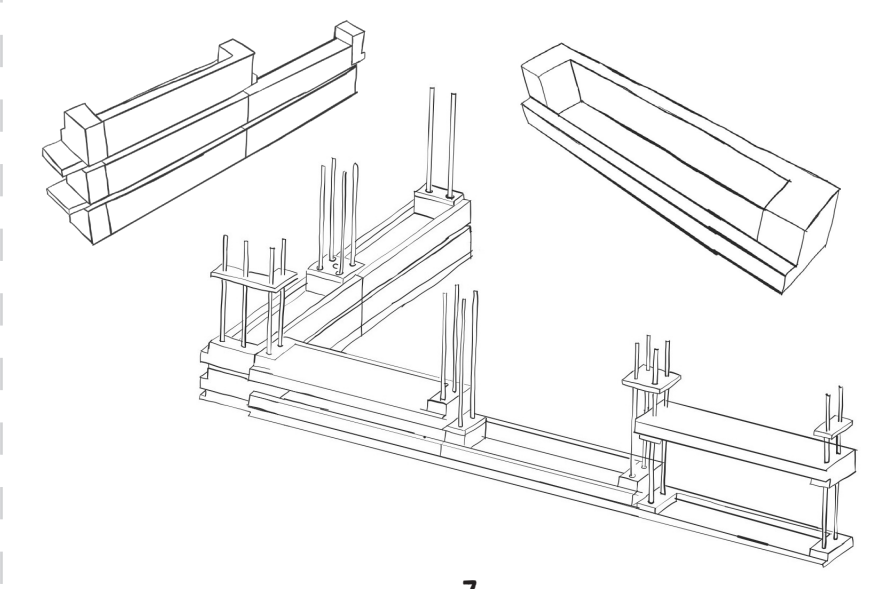
The materials necessary to construct the houses will be made using a Precious Plastics machine that turns plastic pieces into lumber



5

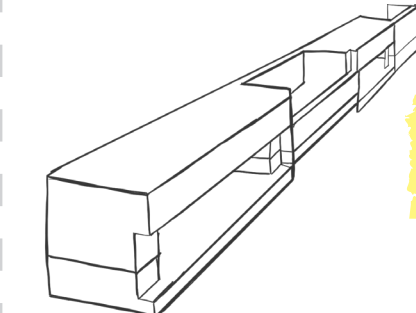
PENTIMENTO BRICK

We finalized the Pentimento brick as the most suitable design option for the structures because it uses flexible pre-fabricated pieces and requires only a small budget.



7

QUALITIES



Depending on which direction they are mounted, the bricks create ledges on either the interior or exterior of the structure.



These ledges can support bed mountings in the interior and garden beds on the exterior of the homes.

8

WHY

There has been a 4.1% increase in homelessness in New York since 2016.

Local and nationwide levels of homelessness have not been this high since the Great Depression.

Homelessness has many contributing factors but one of the most prevalent is the rapid increase in property values in major cities across the nation.



This increase puts families and individuals in a difficult position.

In order to find employment, they must stay close to the city centers, but in order to find affordable housing they're faced with two options

Either move far away from these city centers and spend considerable amounts of time and money commuting, or stay in the city centers and live on the streets.

2

OUTREACH

Target locations for printed materials:

- Subways
- Community Centers
- Meal Centers
- Homeless Services
- Job Centers
- Public Libraries
- Social Services
- Cooling Centers

We aim to build relationships by hitting the pavement outreach too. Responding directly to individuals who would benefit from this system to personally connect and communicate will keep us receptive to their situation and needs.



6

