

MATERIALITY & ASSEMBLY

STUDIO

MATERIALITY & ASSEMBLY

**HIGHLINE
THE BROAD MUSEUM
SYSTEMS-->STUDIO**



STEEL TO CONCRETE



STEEL TO GLASS



HIGHLINE
MATERIALS

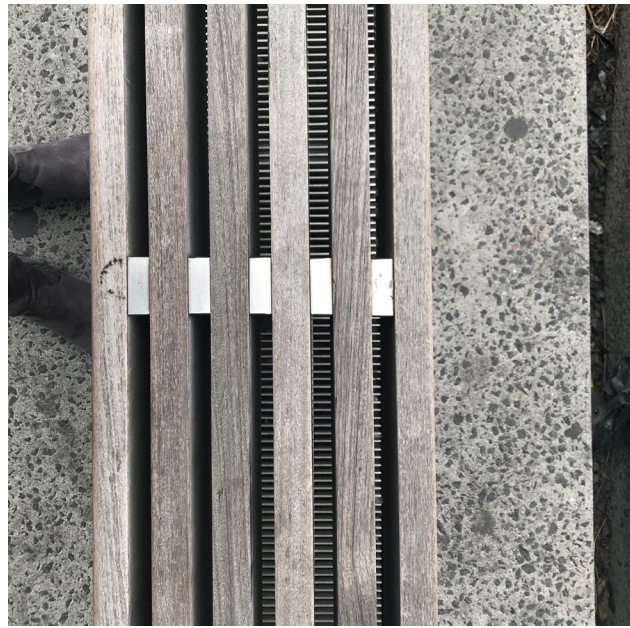
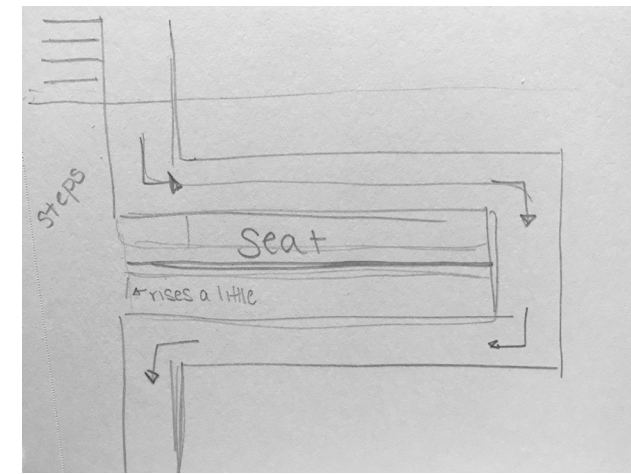
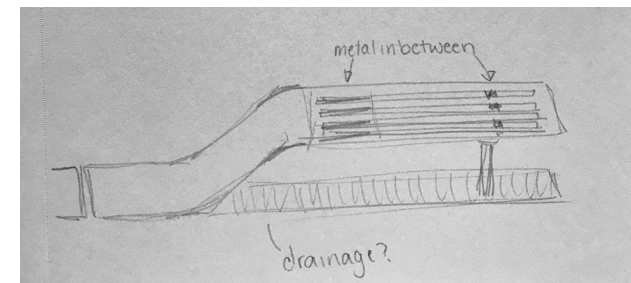
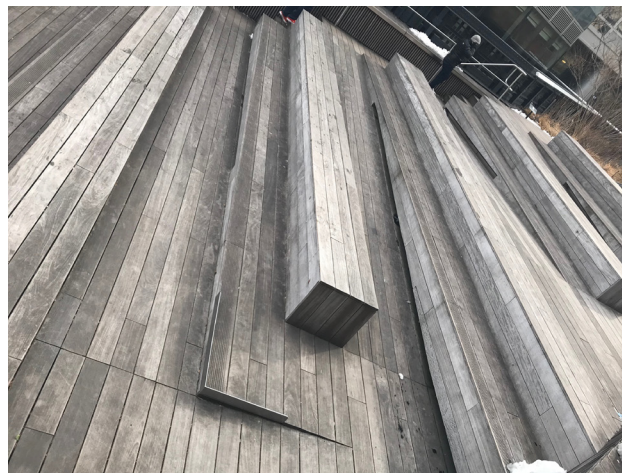


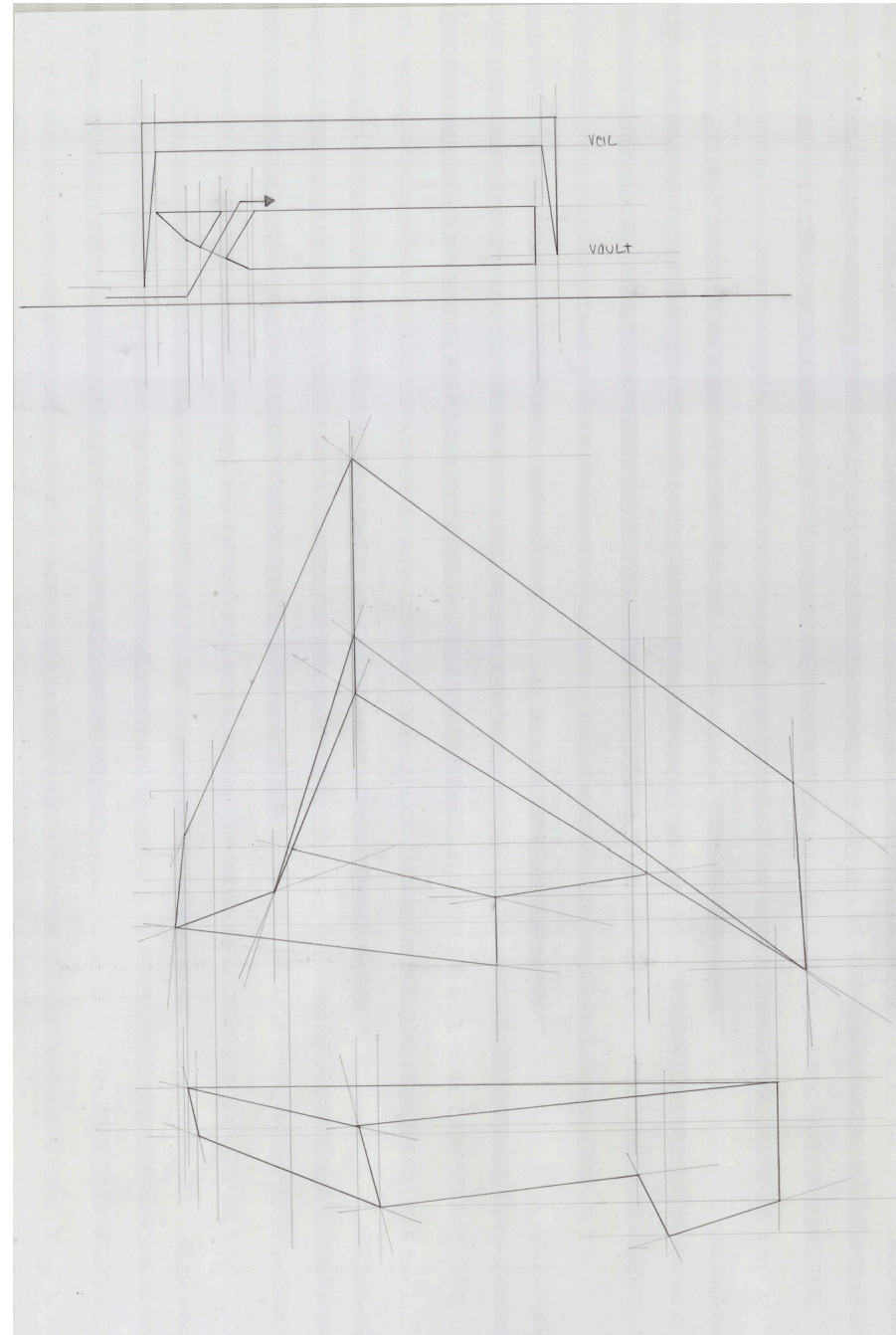
HIGHLINE
SEATING

CONCRETE
LIFTS UP, TURNING INTO A BENCH
THE SEATING CUTS THROUGH THEM,
AND BENEATH BECOMES SOMETHING LIKE
A DRAINAGE

CONCRETE-->WOOD
RAMPS DOWN, AND LEVELED TO SIT

MOVEABLE SEATING



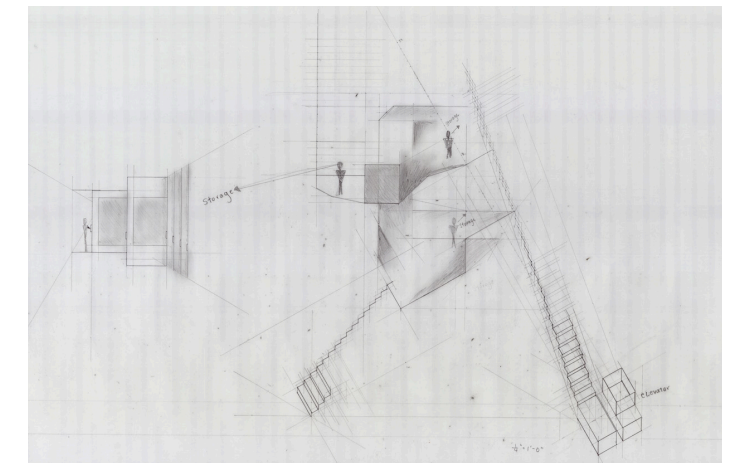


THE BROAD MUSEUM OF CONTEMPORARY ART
LOCATION: DOWNTOWN LA
ARCHITECTS: DILLER SCOFIDIO AND RENFRO
YEAR COMPLETED: 2005

NEXT TO THE WALT DISNEY CONCERT HALL, WHICH HAS MORE DYNAMIC SHAPES, MADE OF STEEL IN CONTRAST TO THE BROAD, THAT IS VERY BOX-LIKE

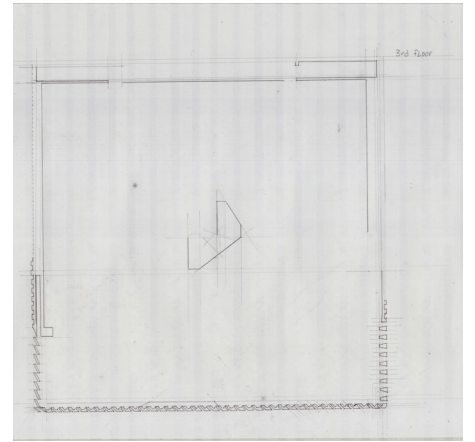
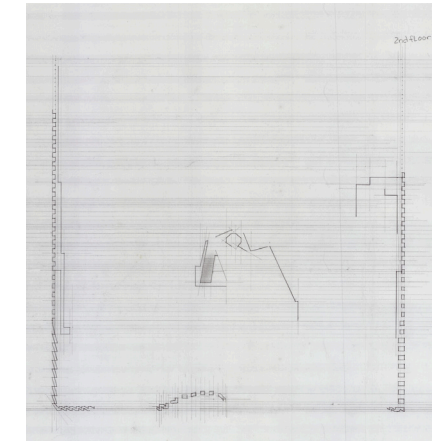
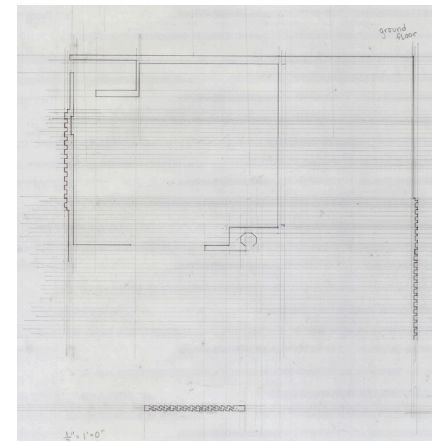
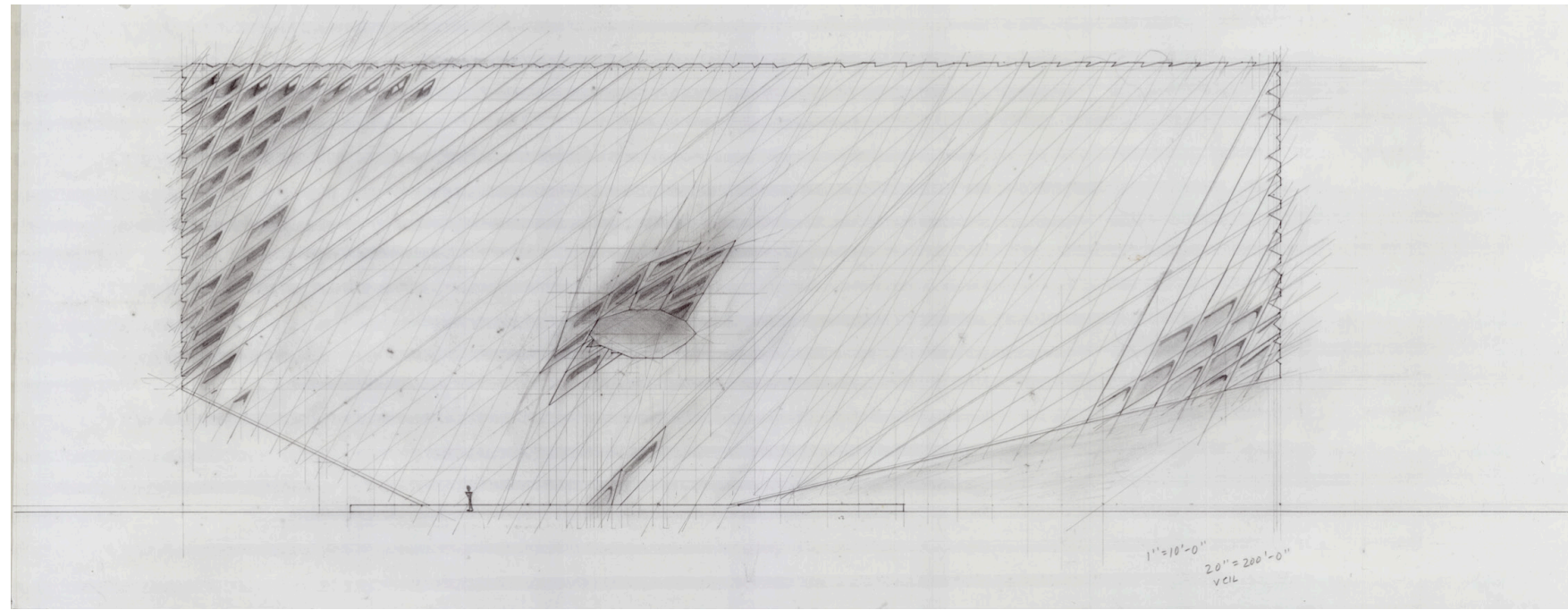
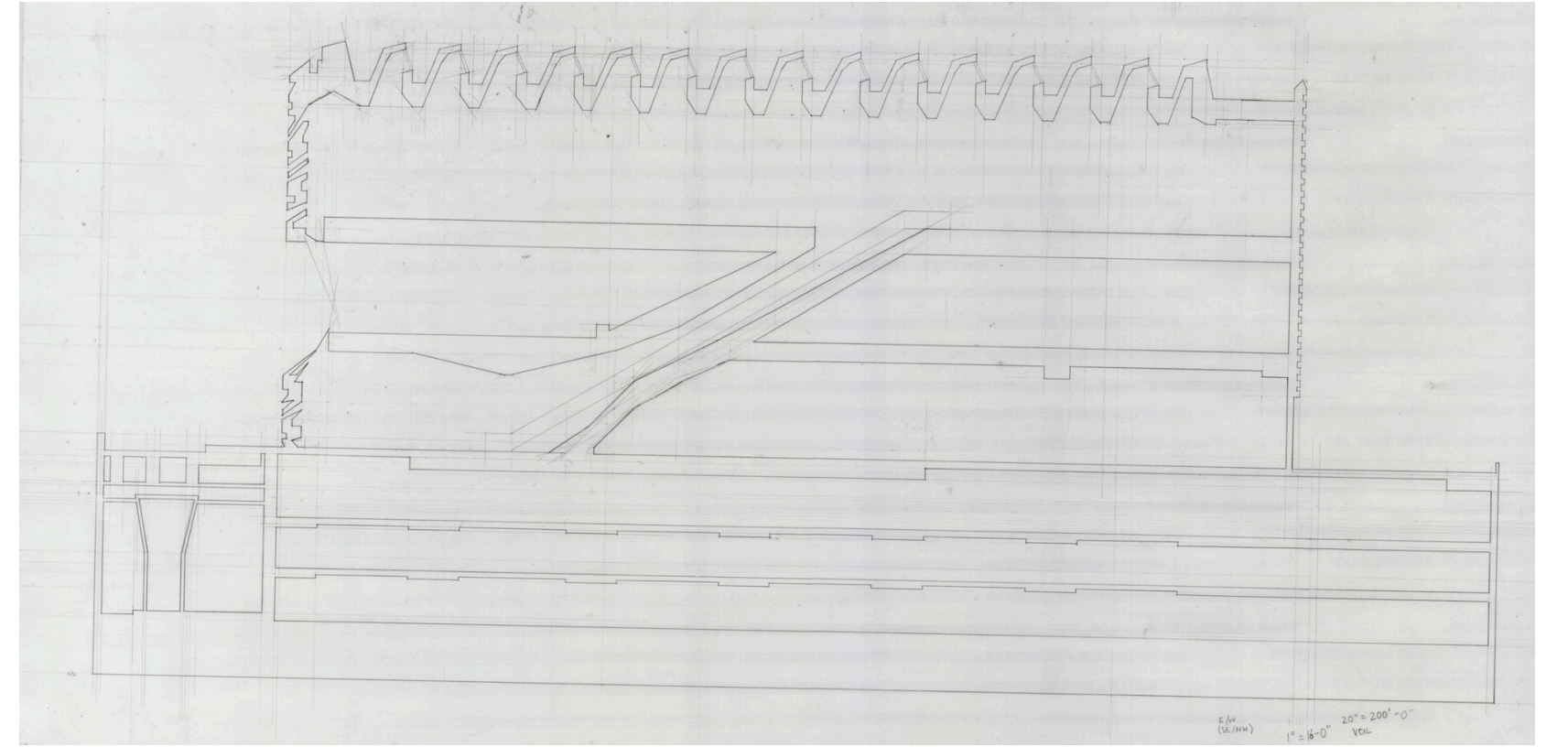
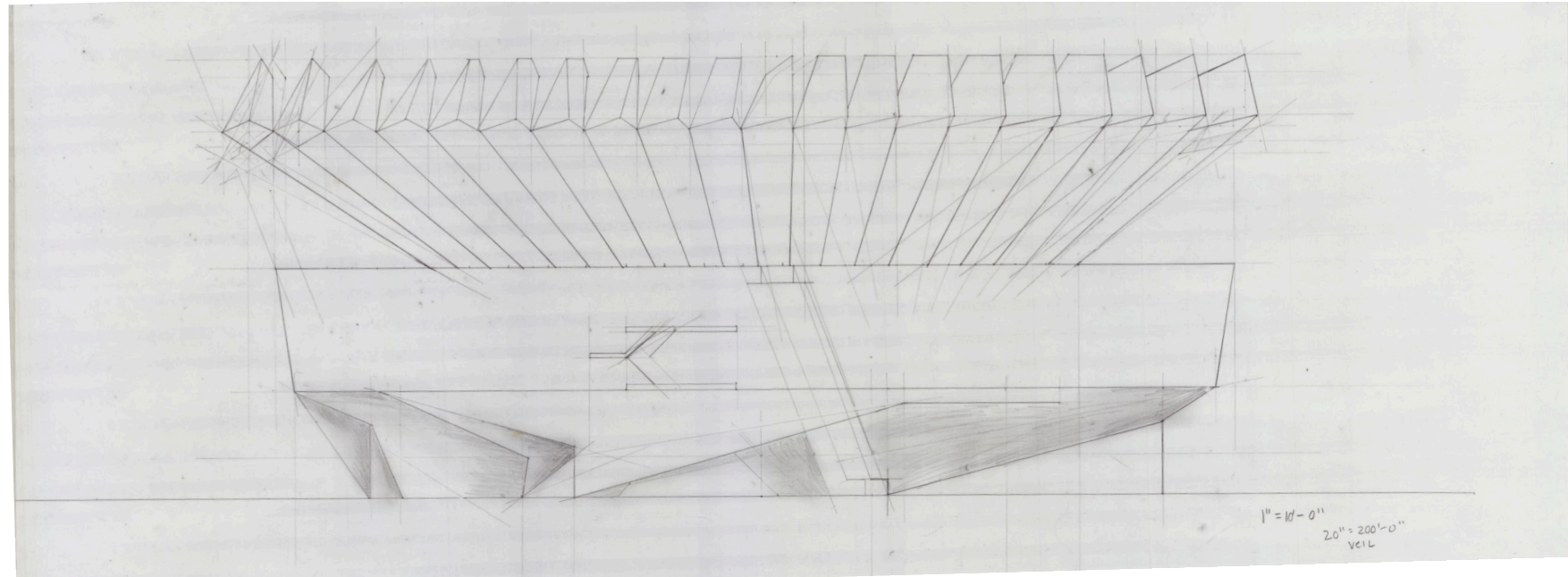
BIGGER OPENING FACES THE CROSSWALK STREET SIDE, AND WHEN ENTERING, YOU ARE NEAR THE ELEVATOR THAT TUNNELS ALL THE WAY TO THE TOP FLOOR
ON THE LEFT SIDE, FROM THE SIDEWALK, AND AS YOU ENTER, YOU ARE NEAR THE STAIR CASE, LEADING YOU UP LEVEL BY LEVEL

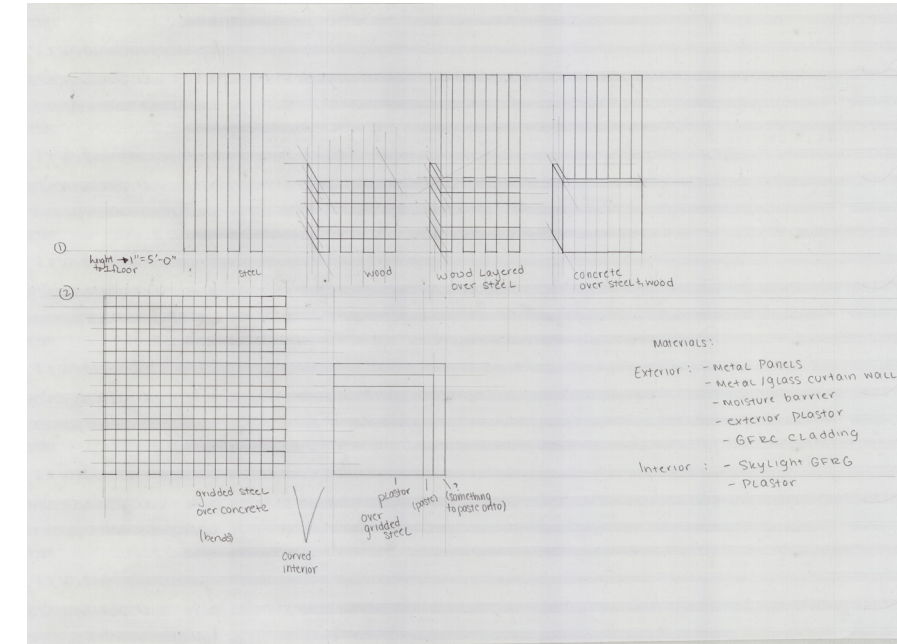
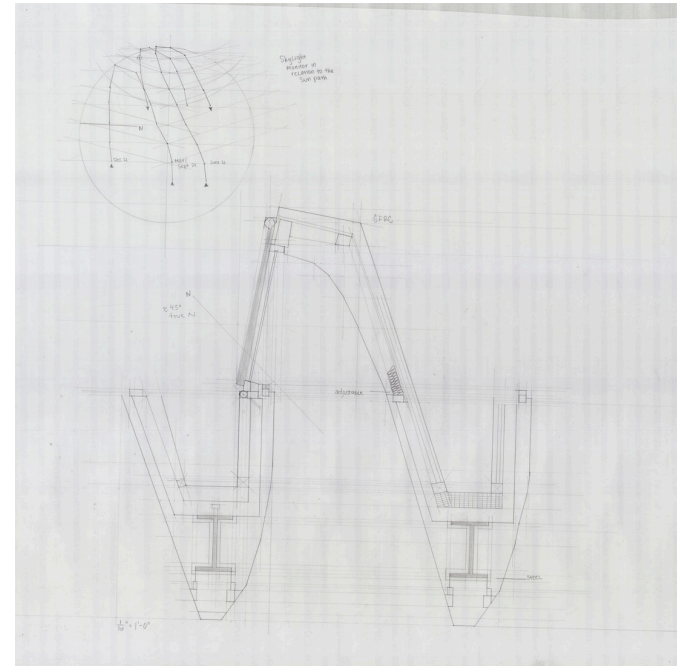
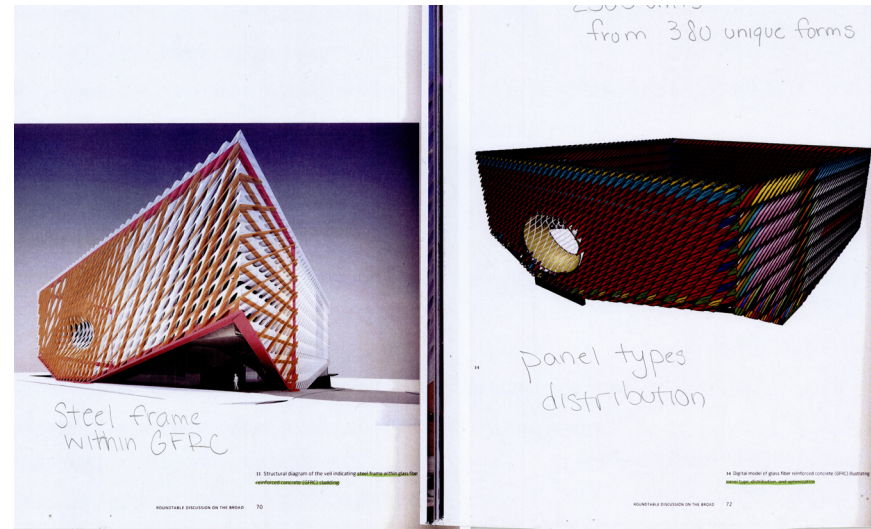
IMAGES FOUND:
THE BROAD CONSTRUCTION TIME LAPSE
THE BROAD: AN ART MUSEUM DESIGNED BY DILLER SCOFIDIO + RENFRO



THE BROAD MUSEUM

VEIL AND VAULT



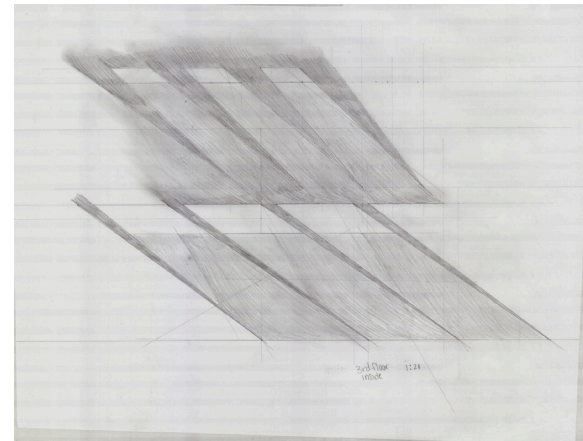
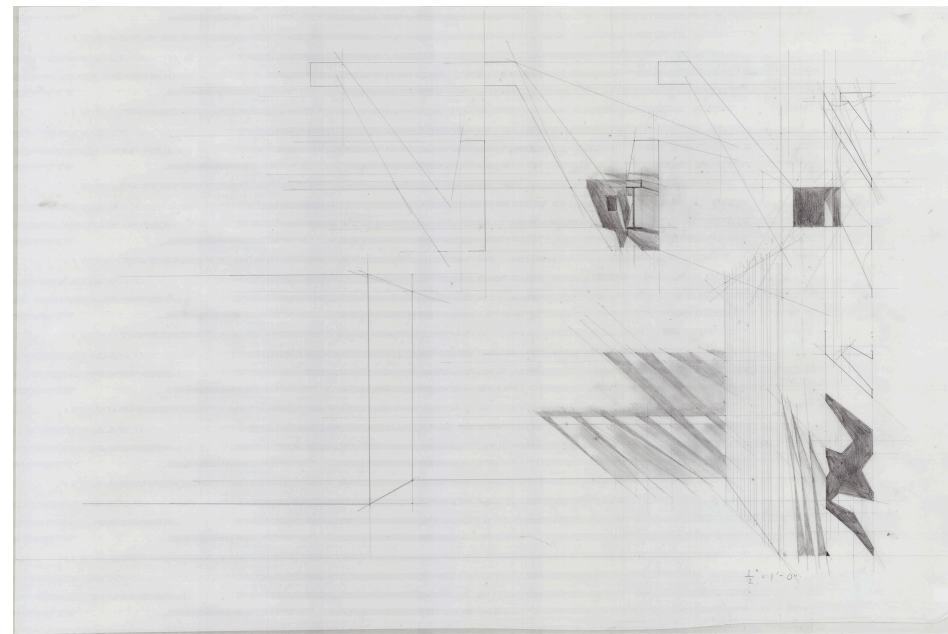


THE VAULT

ACTS AS A CIRCULATION, WHERE THE USER CAN INHABIT THE SPACE, VIEWING THE ART

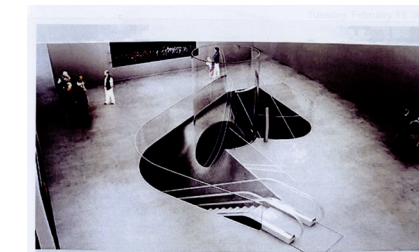
THE INTERIOR HAS A SOFTER EDGE, AND THE WALLS BECOME THE CEILING, LEADING YOU THROUGH THE SPACE WITH ITS CURVES

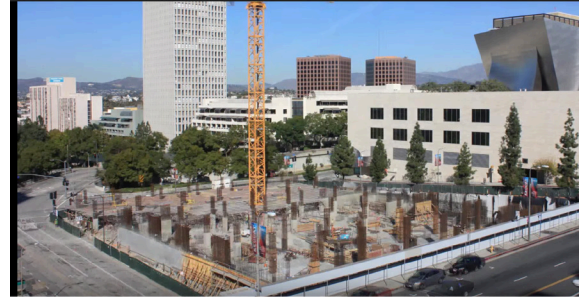
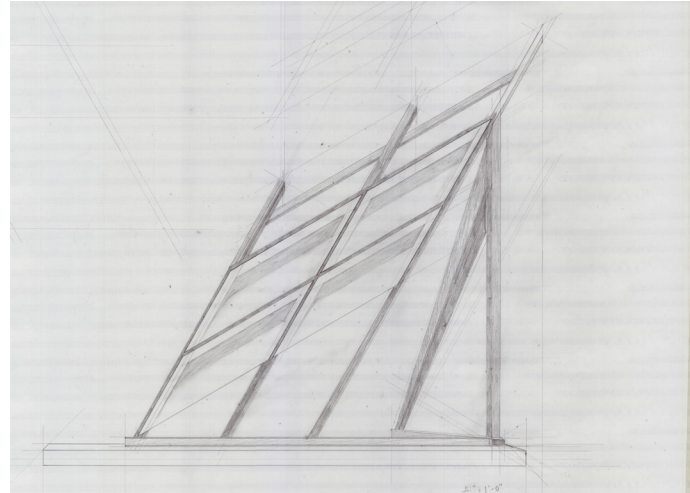
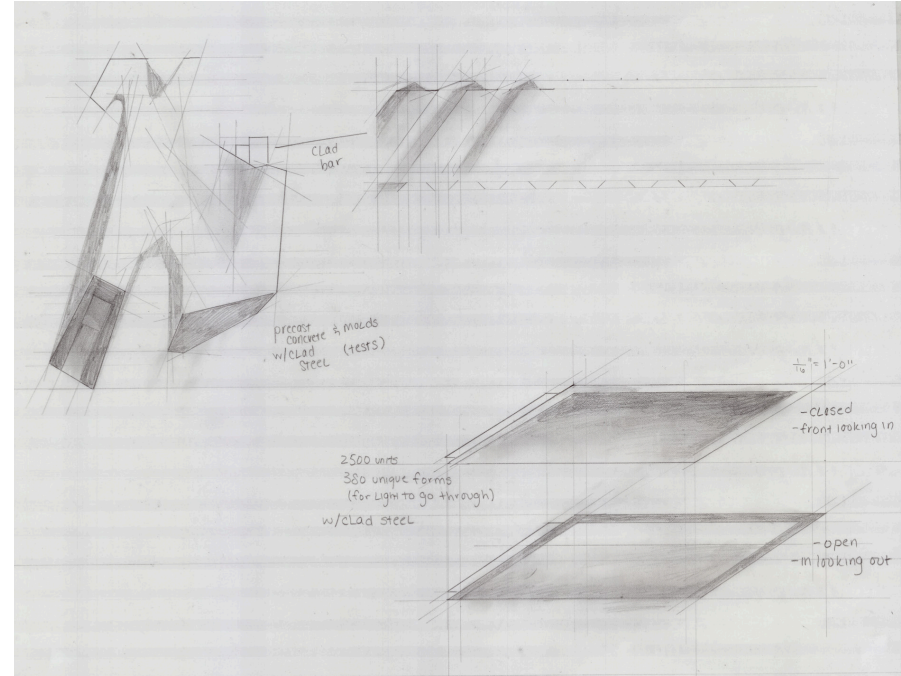
ON DIFFERENT LEVELS OF THE STAIR CASE, THE USER IS ABLE TO SEE INTO THE STORAGE SPACE, WHERE THE ART IS BEING KEPT, AND HOW THEY MOVE IT



THE VEIL

SURROUNDING ALL SIDES, WITH 2500 UNITS, 380 DIFFERENT FORMS, WHERE THE UNITS HAVE DIFFERENT SIZES OF OPENINGS, ALLOWING LIGHT TO BOUNCE INTO THE BUILDING





MAIN MATERIALS USED: CONCRETE, GLASS
REINFORCED CONCRETE (GRFC)
OTHER MATERIALS: WOOD, STEEL, PLASTER

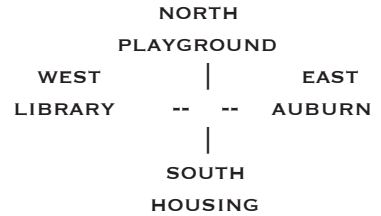
THE BROAD MUSEUM

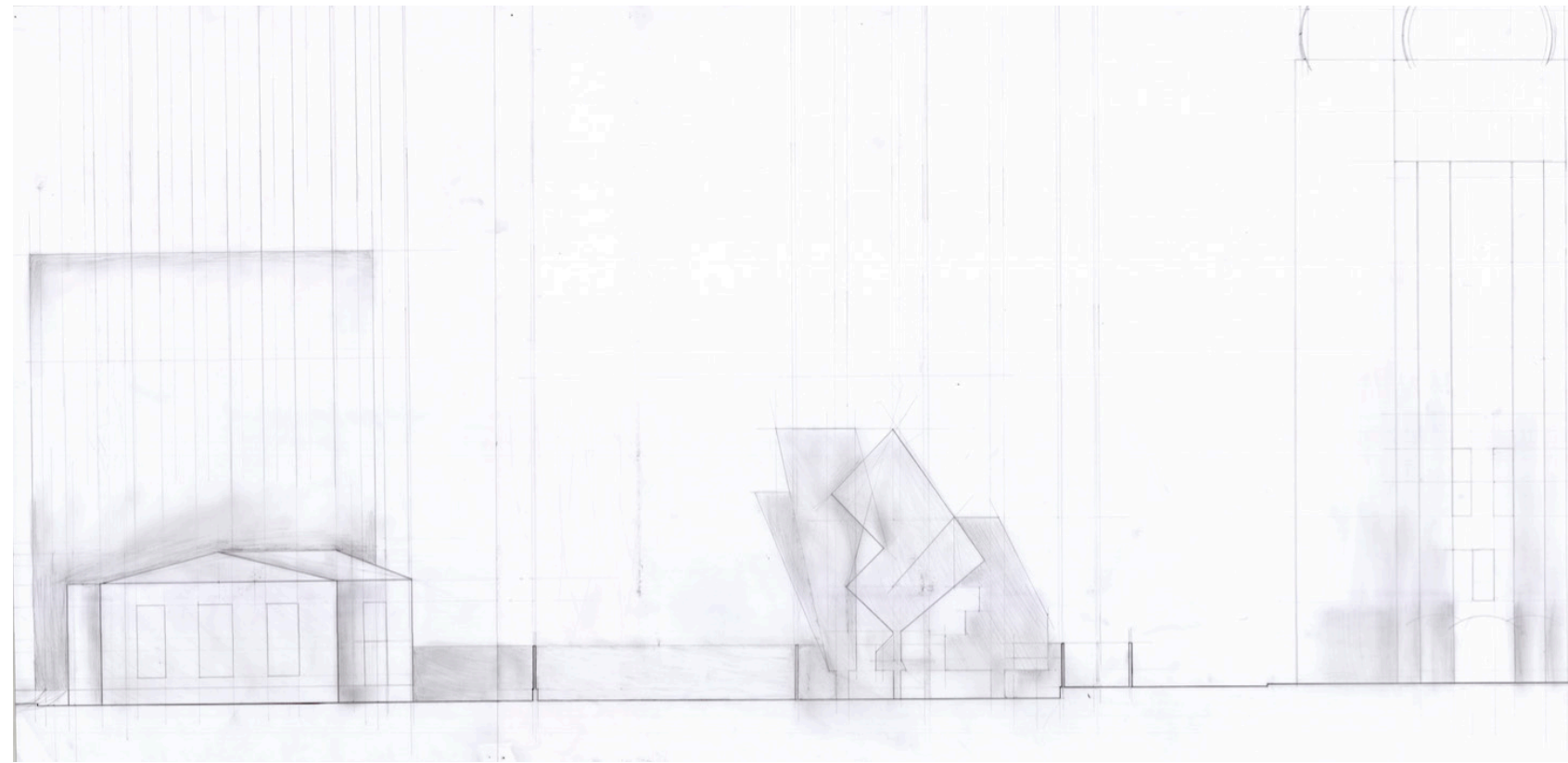
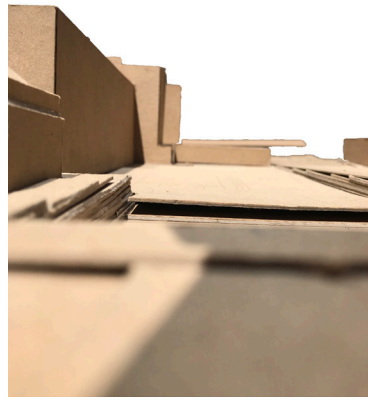
MATERIALS





LOCATION: NEAR FORT GREEN PARK, BROOKLYN, AUBURN STREET
SITE: NEXT TO COMMUNITY LIBRARY, SCHOOL PLAYGROUND, AUBURN
(TREATMENT) ASSESSMENT CENTER, HOSPITAL, AND ACROSS NYCHA HOUSING



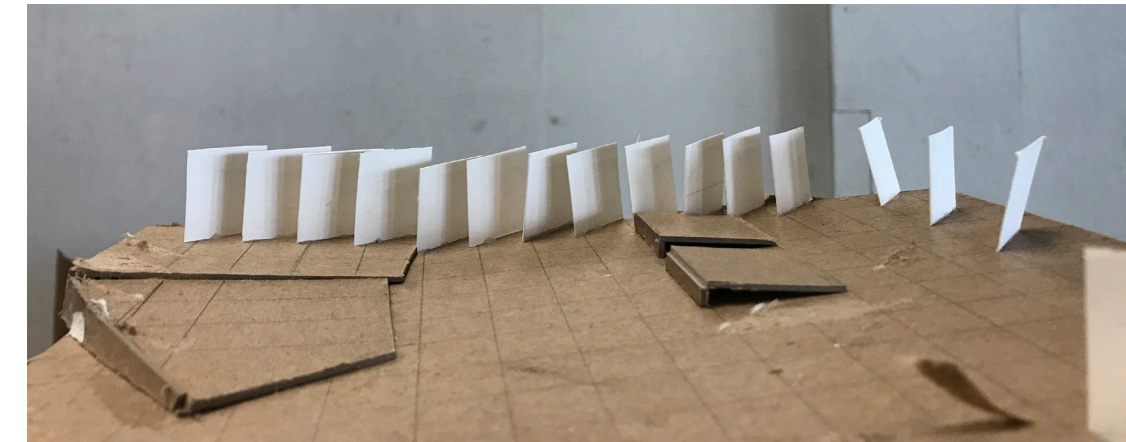
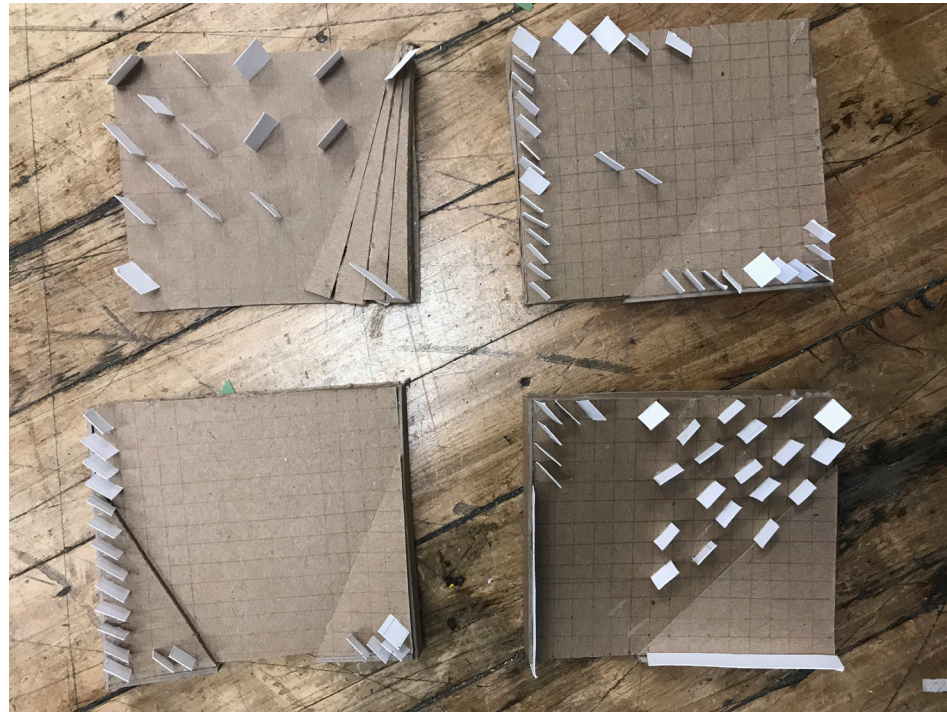
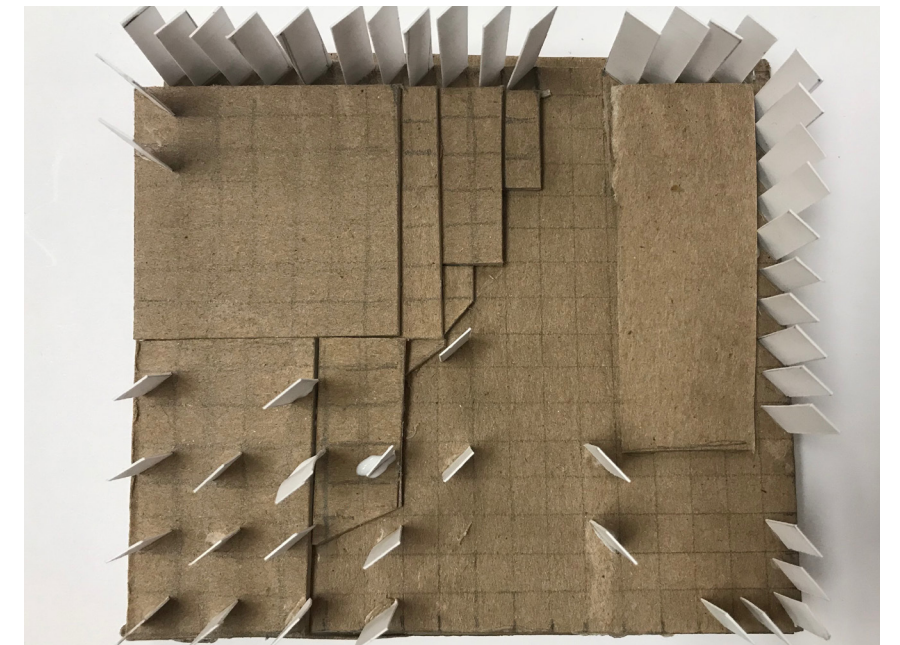
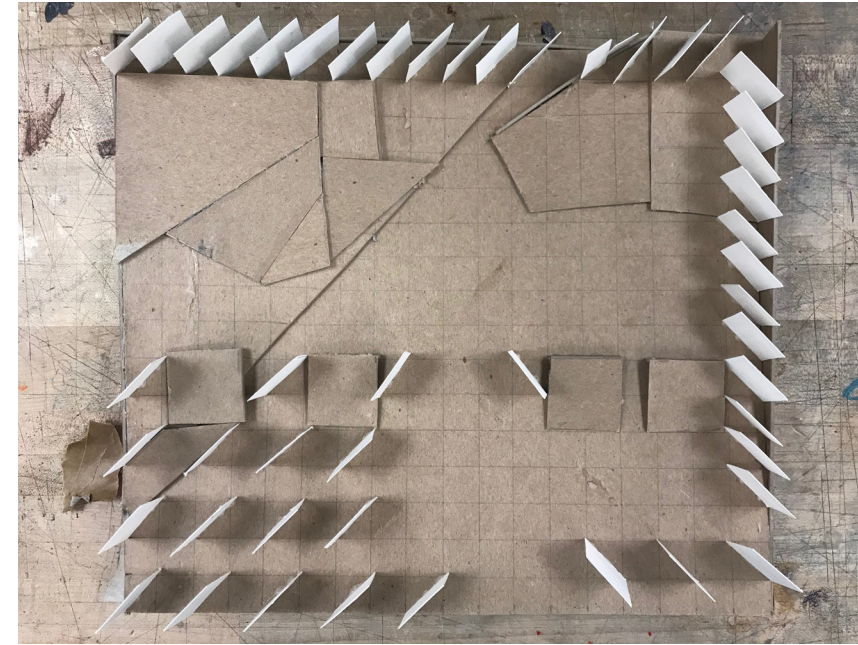
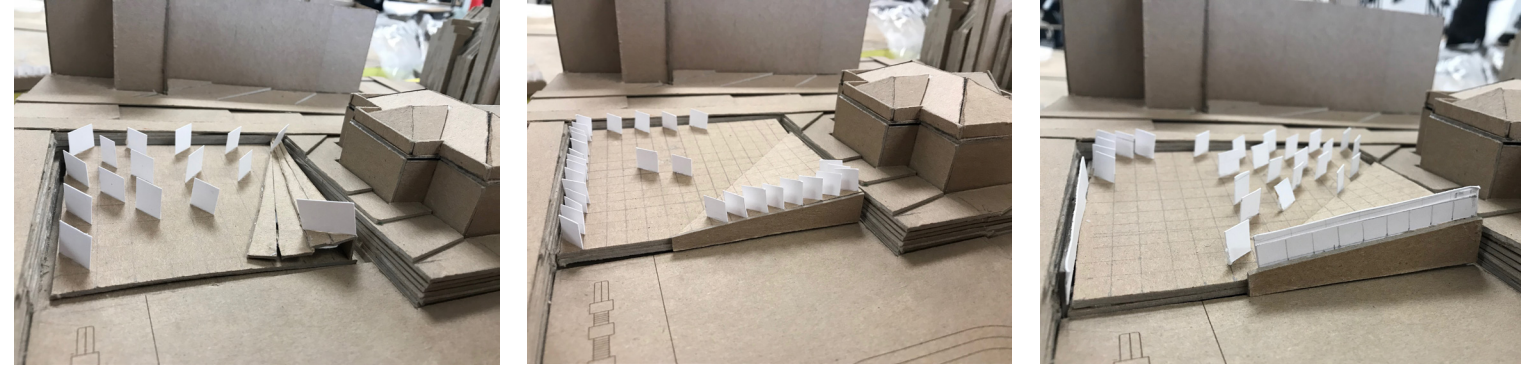


USING THE GROUND PLANE, FROM SIDEWALK AND LIBRARY SIDE, DOWN INTO THE PLAYGROUND
PULLING YOU IN, LEADING YOU DOWN

THE VERTICALS CREATE AND BLOCK VIEW, AS WELL AS MOVEMENT,
SEEING BEFORE HEARING, HEARING BEFORE SEEING

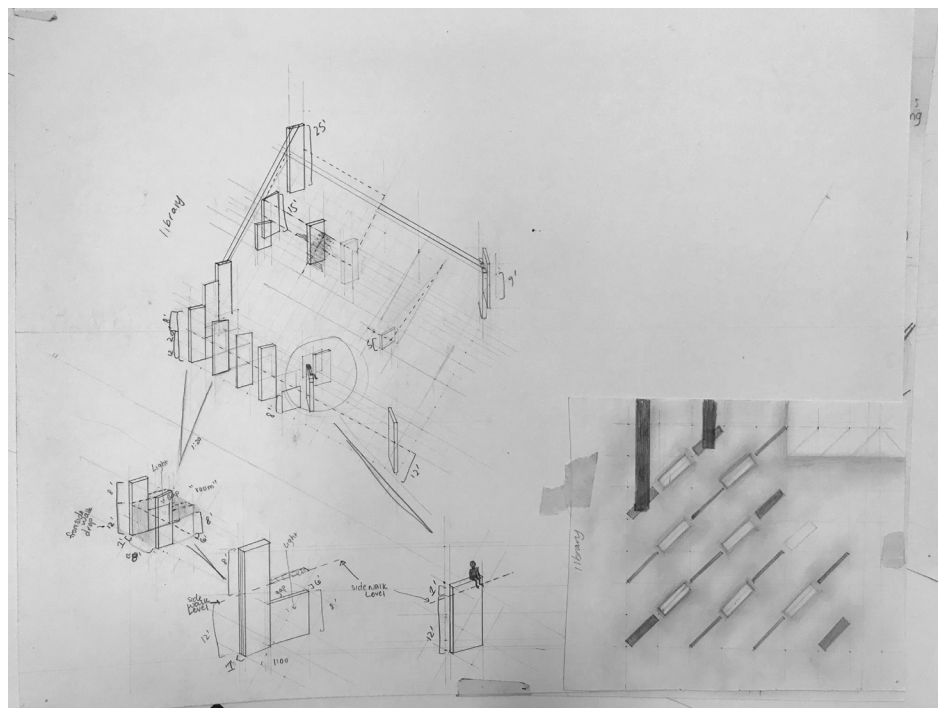
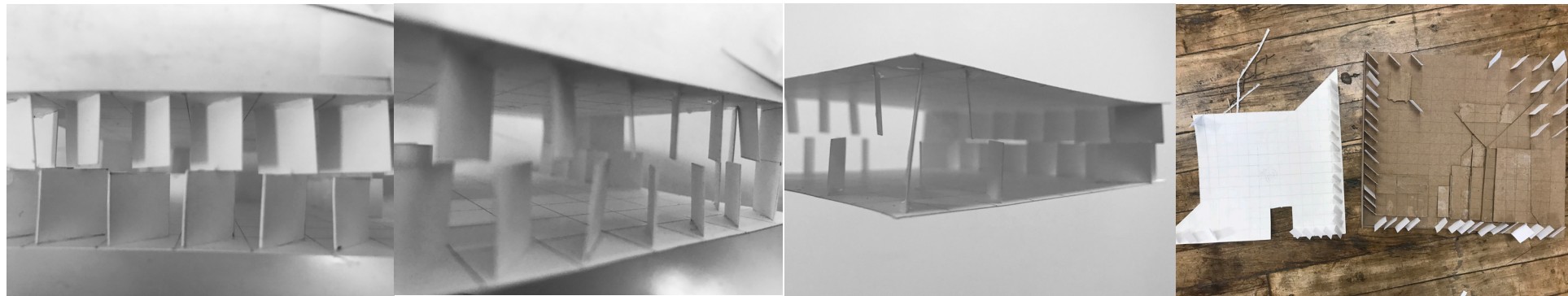
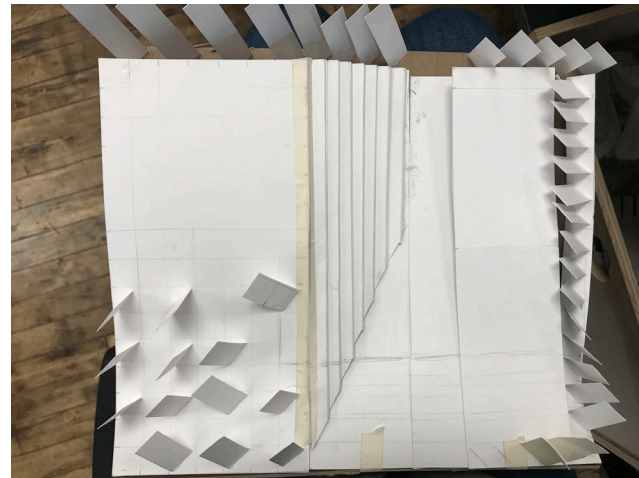
STUDIO

**SITE INTERVENTION
GROUNDWORK**



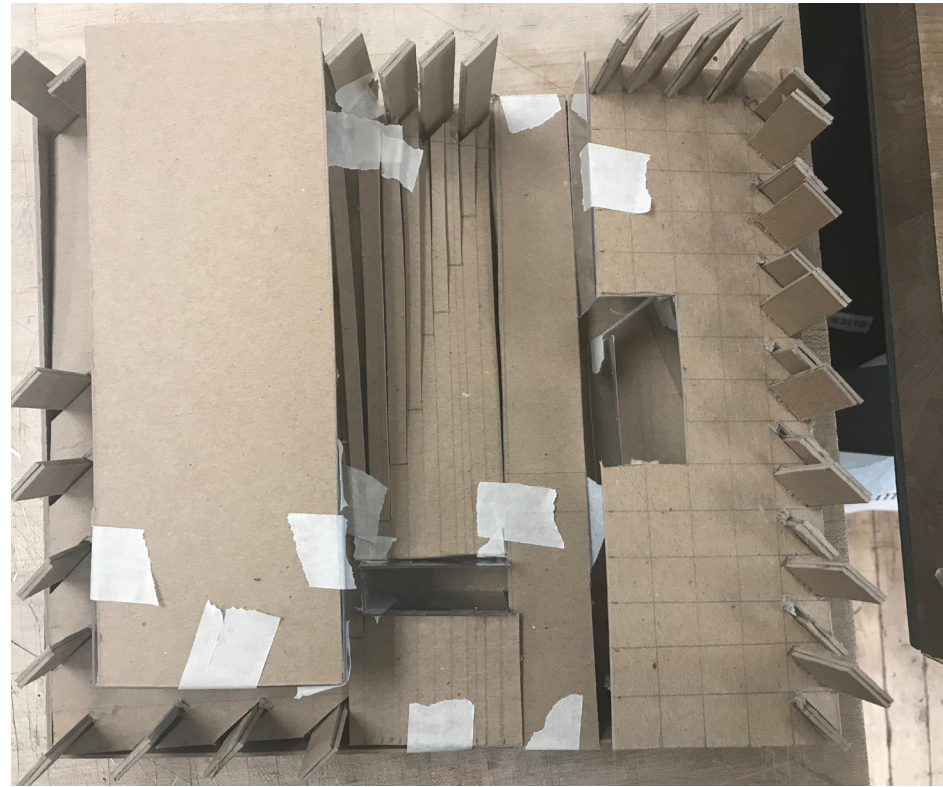
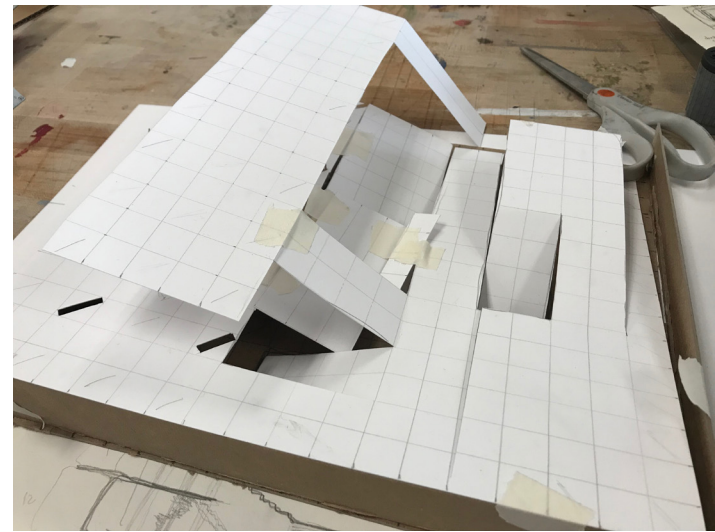
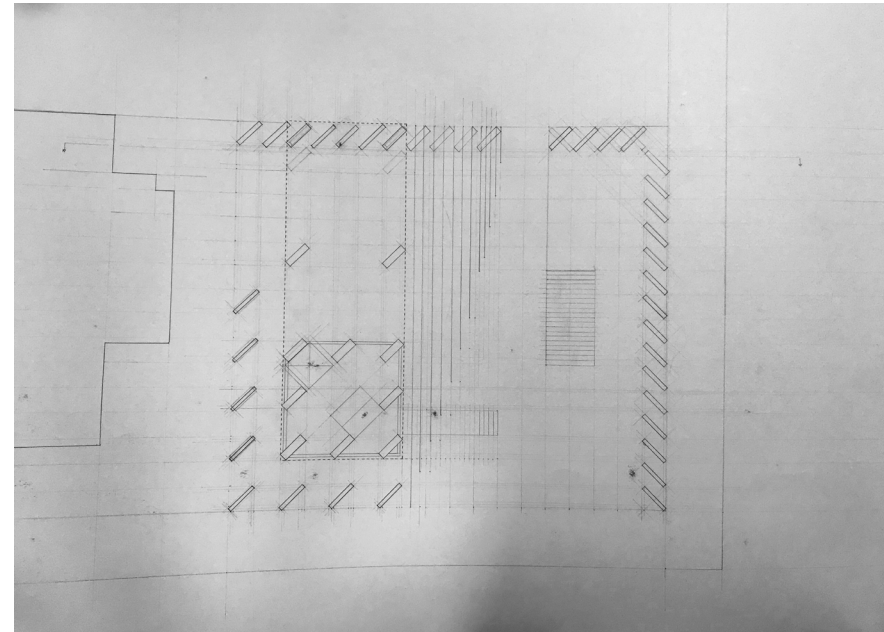
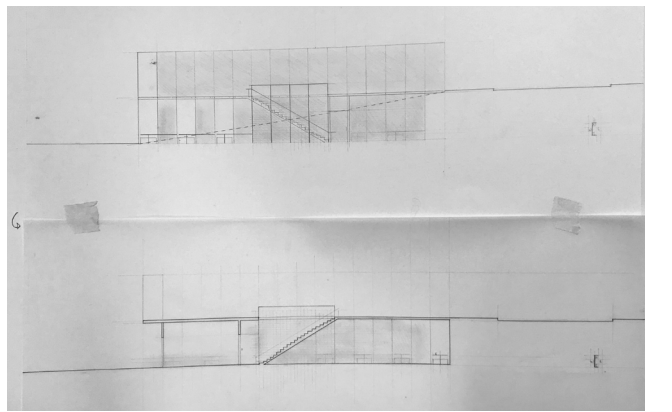
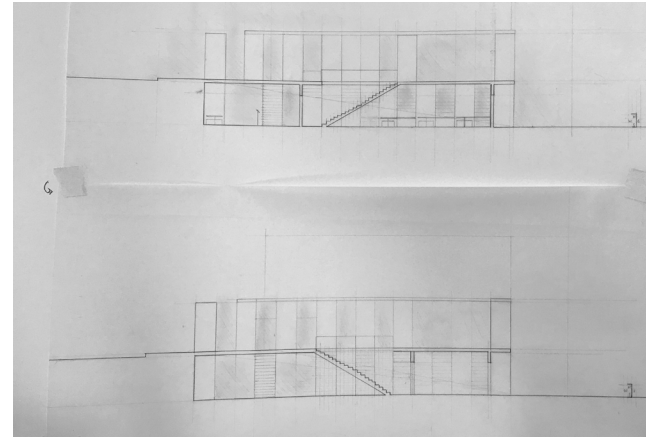
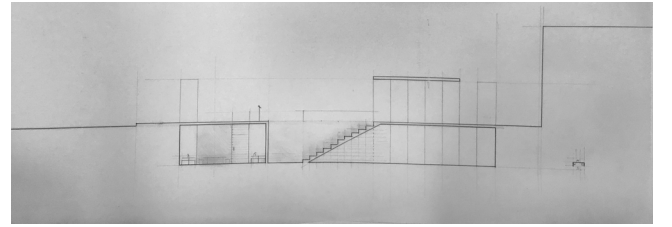
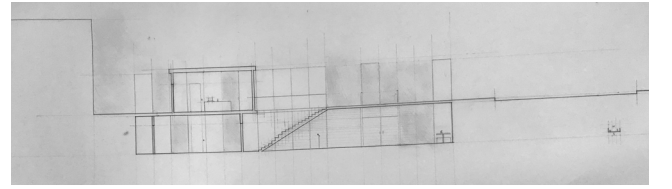
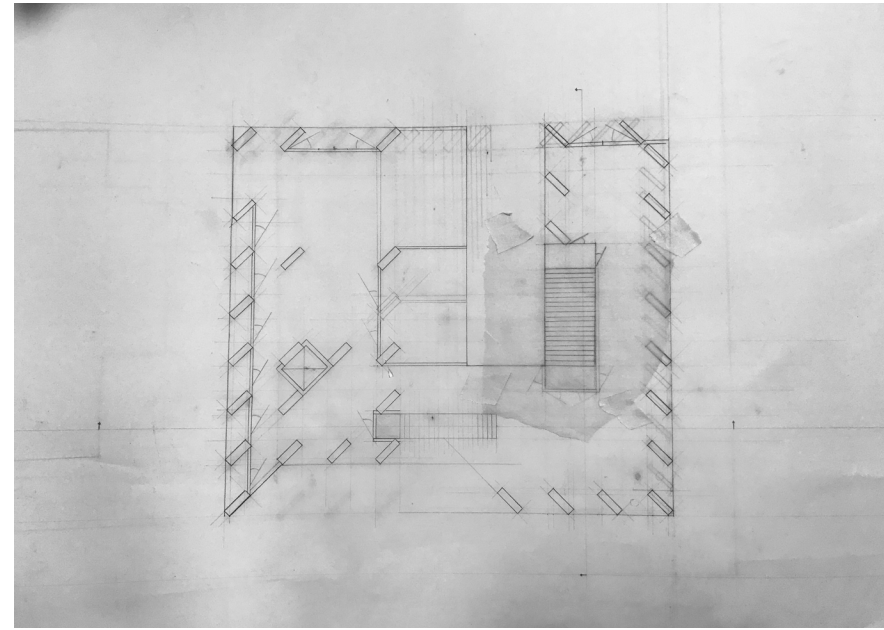
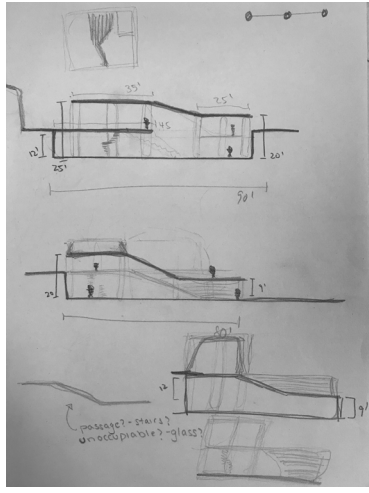
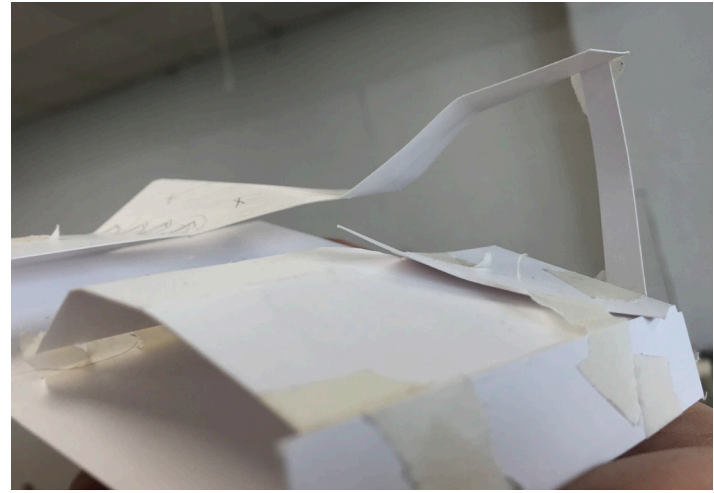
STUDIO

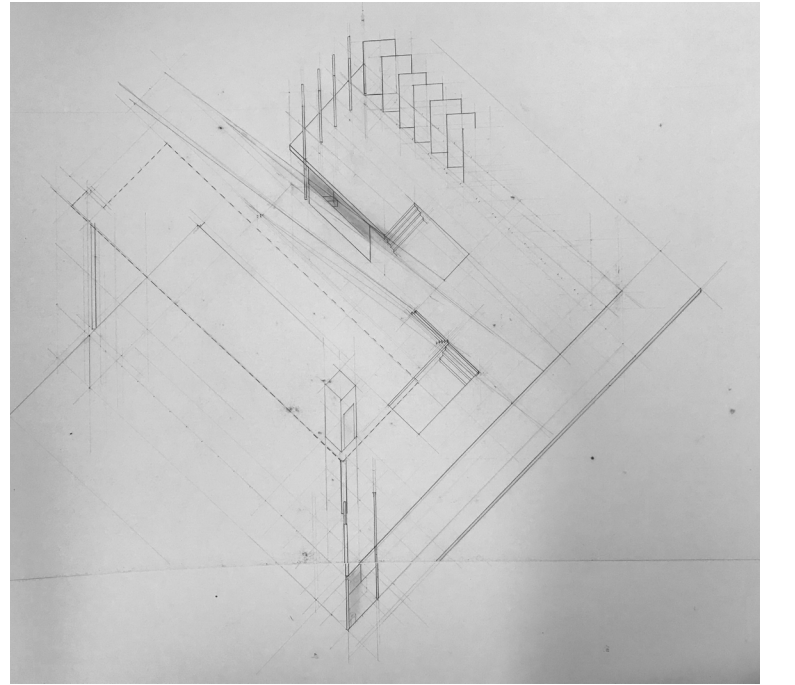
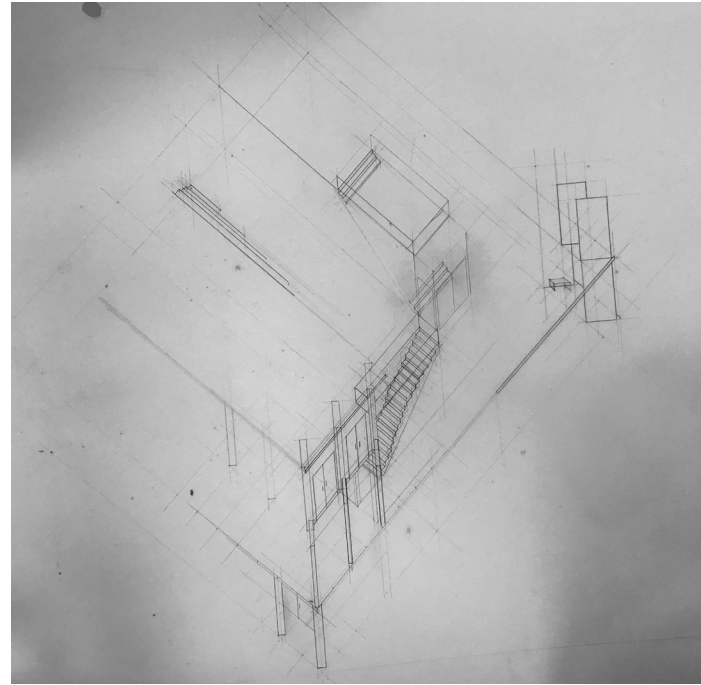
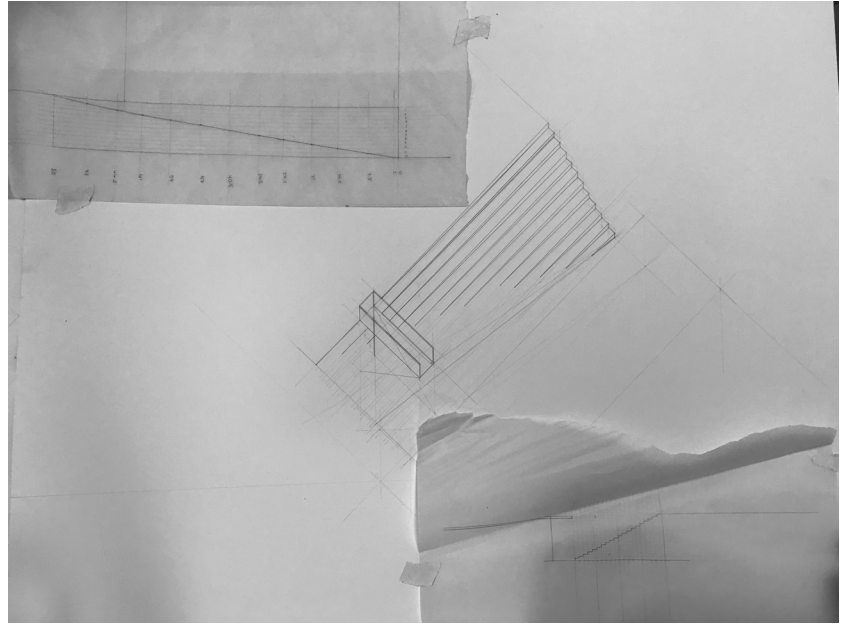
OUTDOOR PERFORMANCE
INDOOR PERFORMANCE

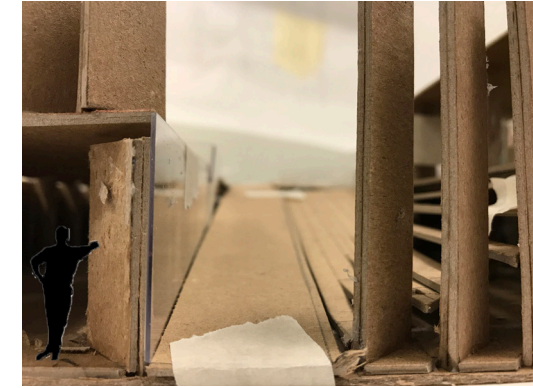


STUDIO

**PUTTING ON A ROOF
WHAT IS STRUCTURAL**

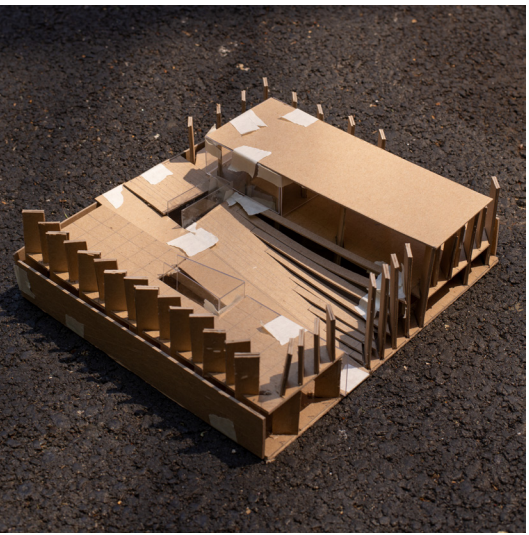
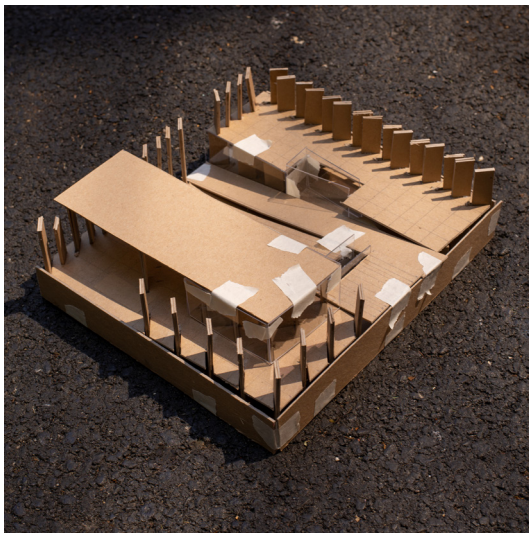
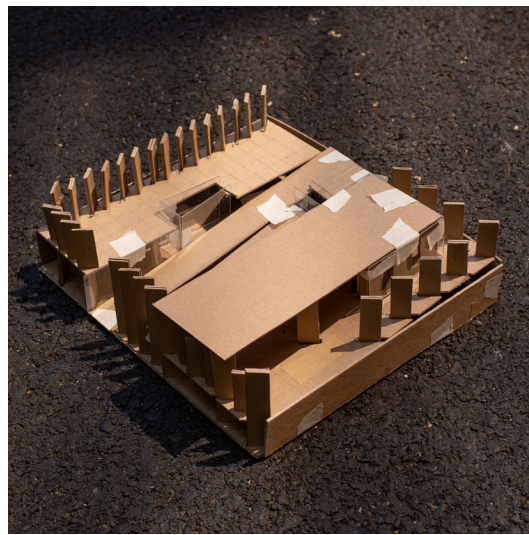
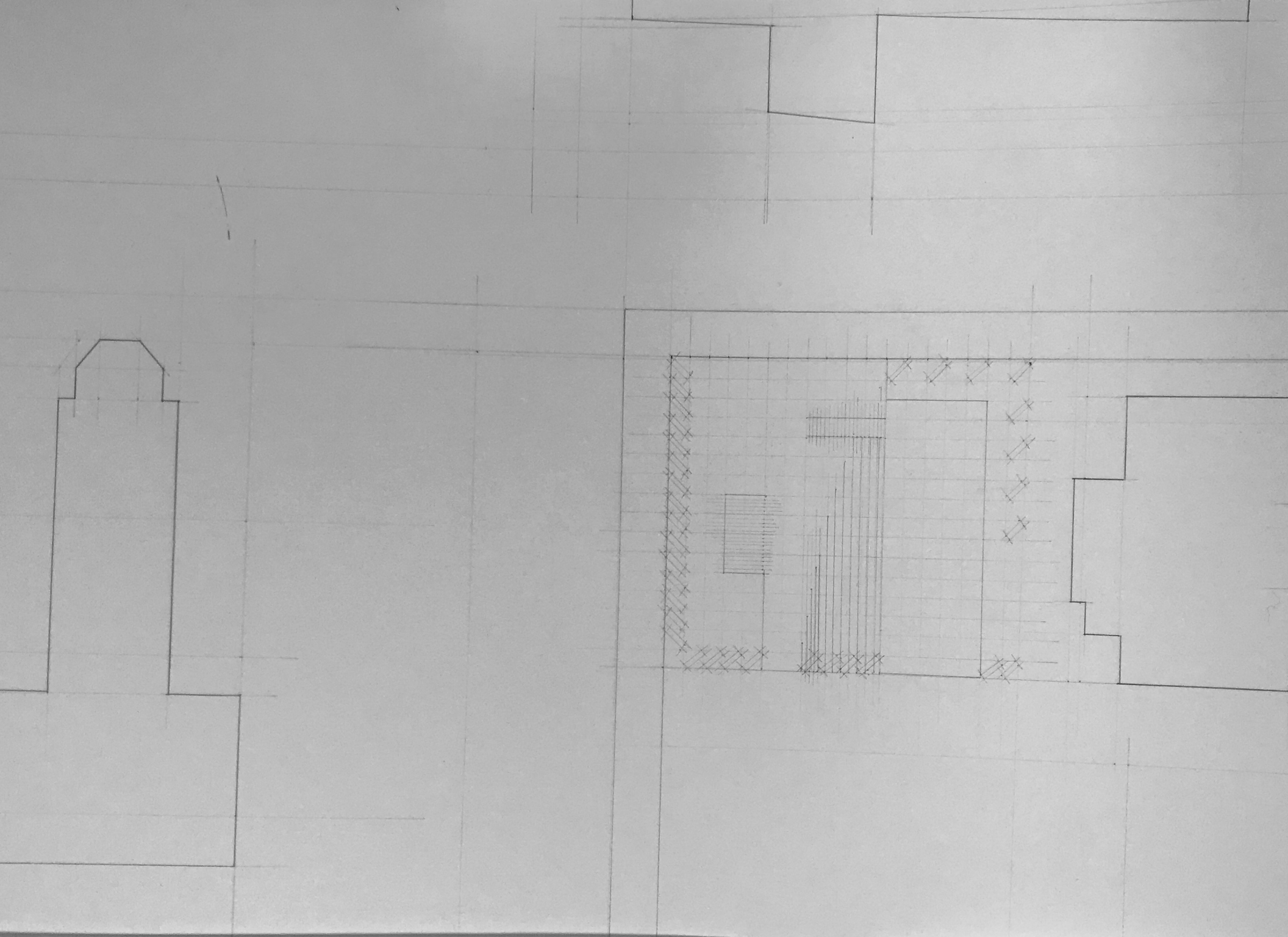






STUDIO

SCALED FIGURES AND SUNLIGHT



CAITLIN TSOI

2018