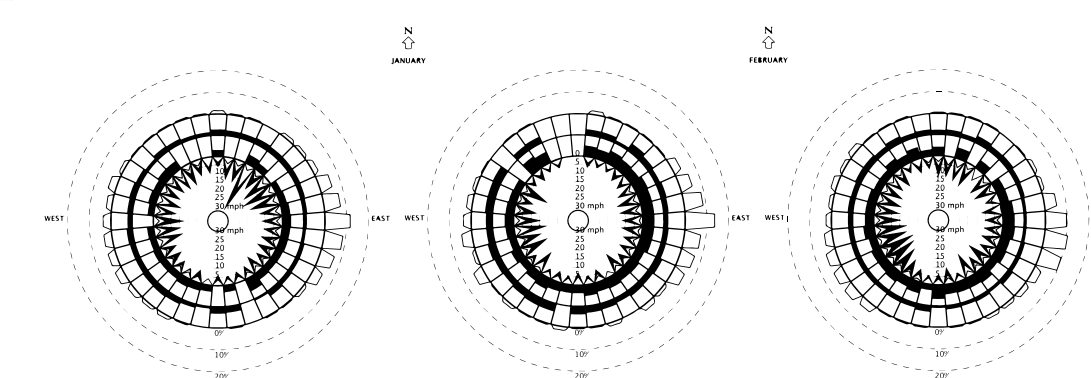
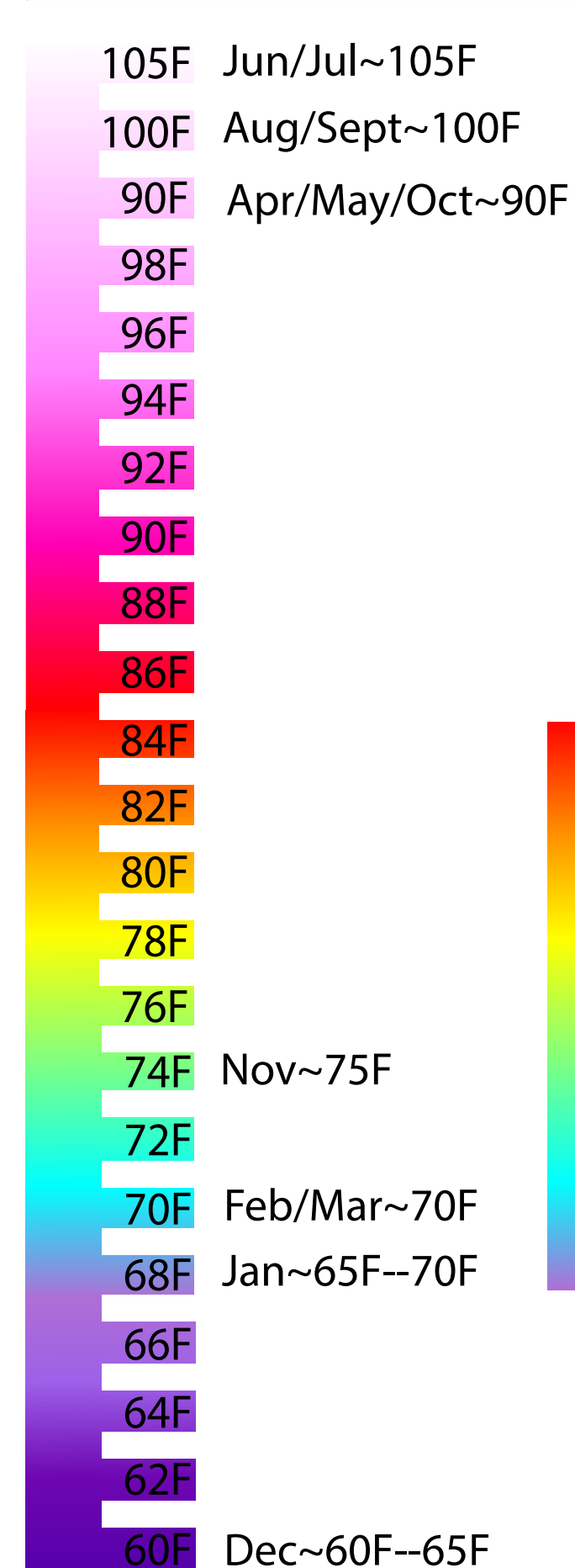
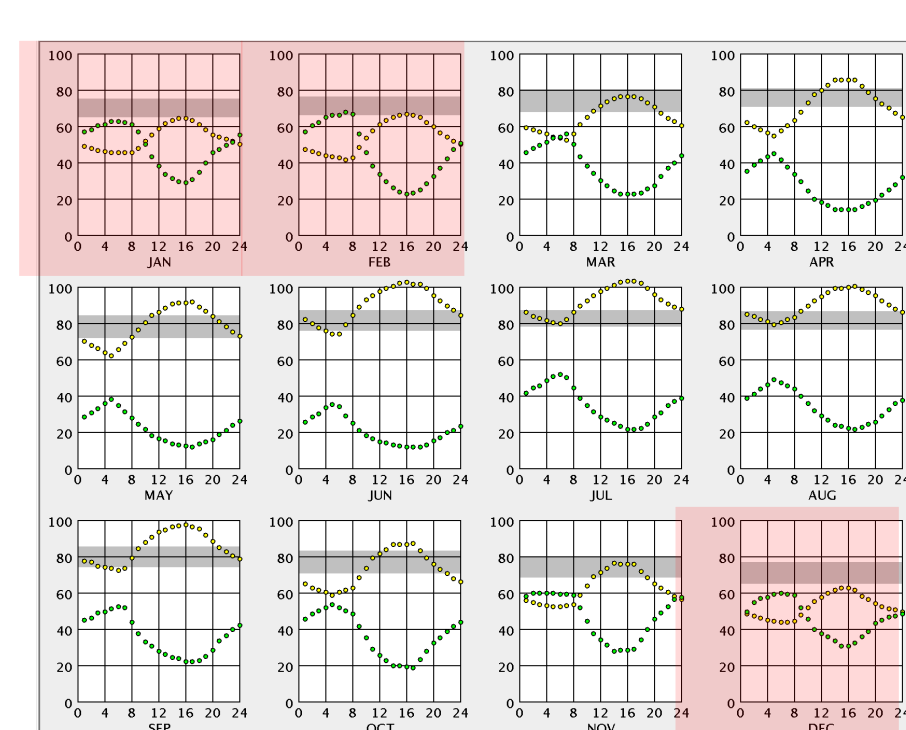
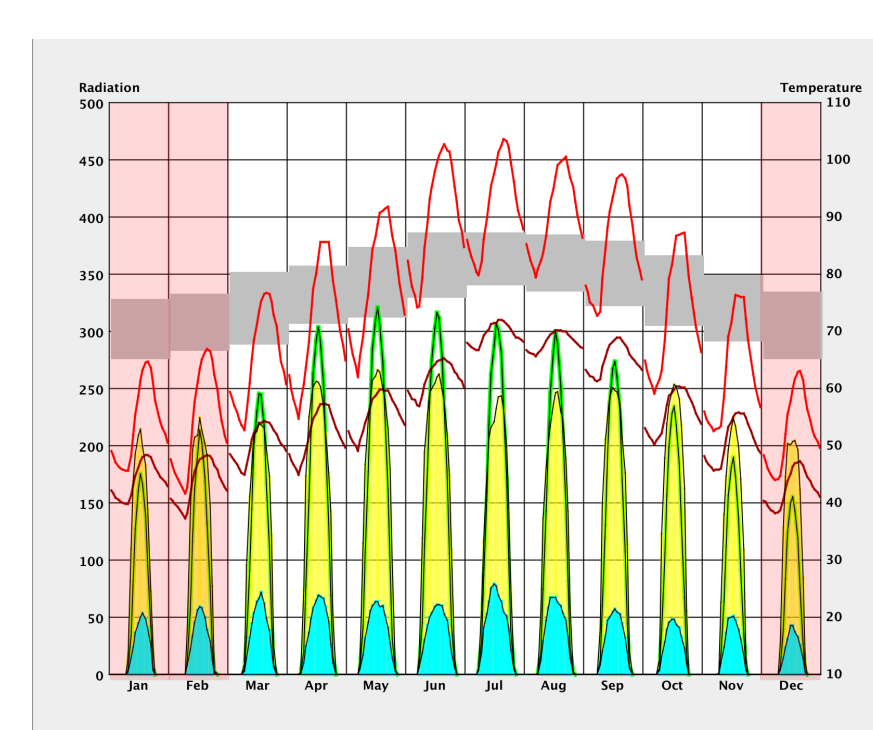
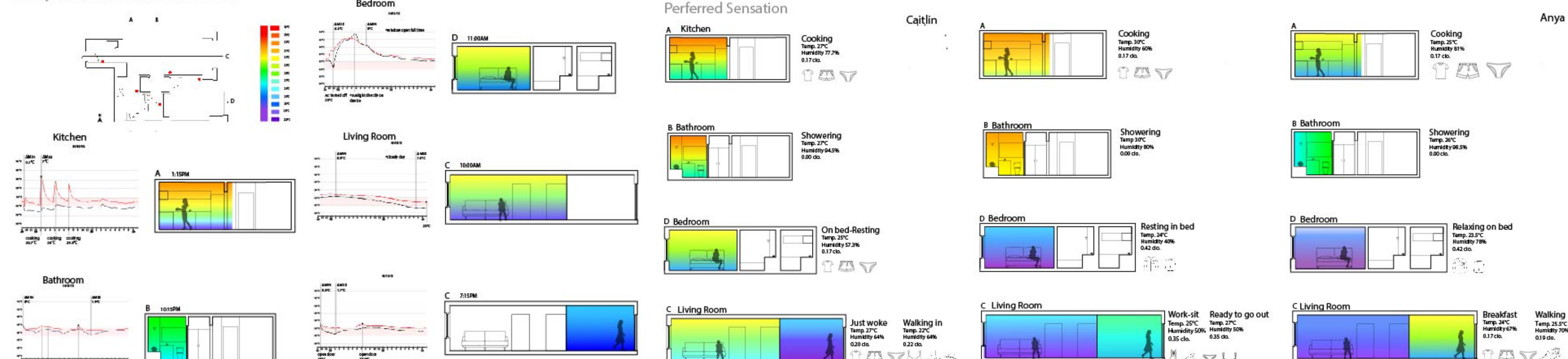


Site



wind from E/W

Body and Thermal Sensation



Preferred Sensation

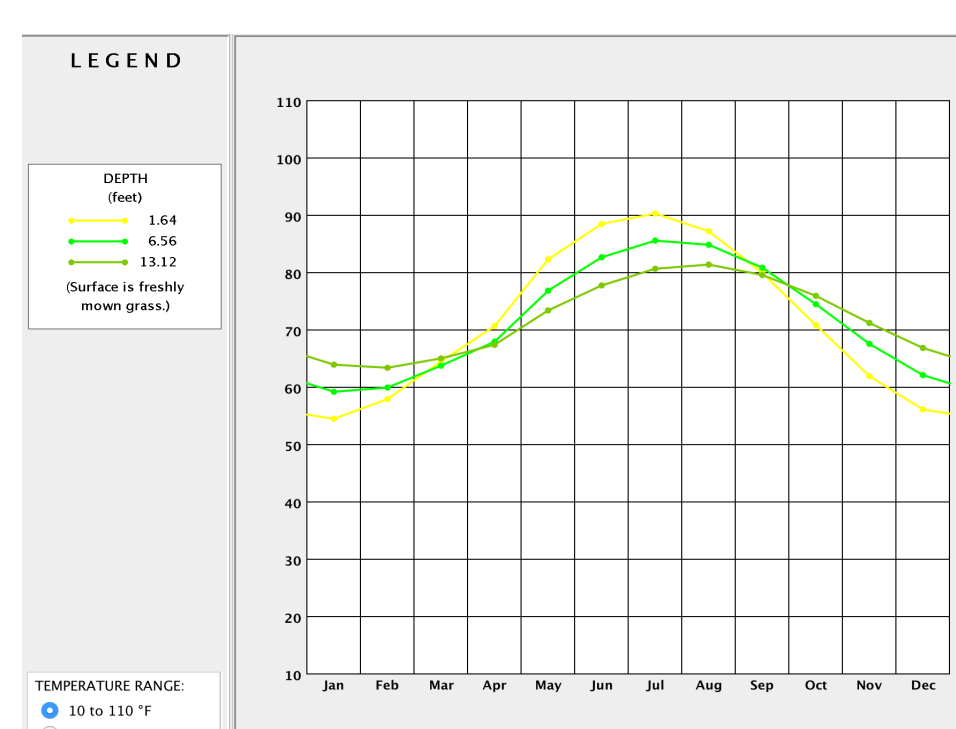
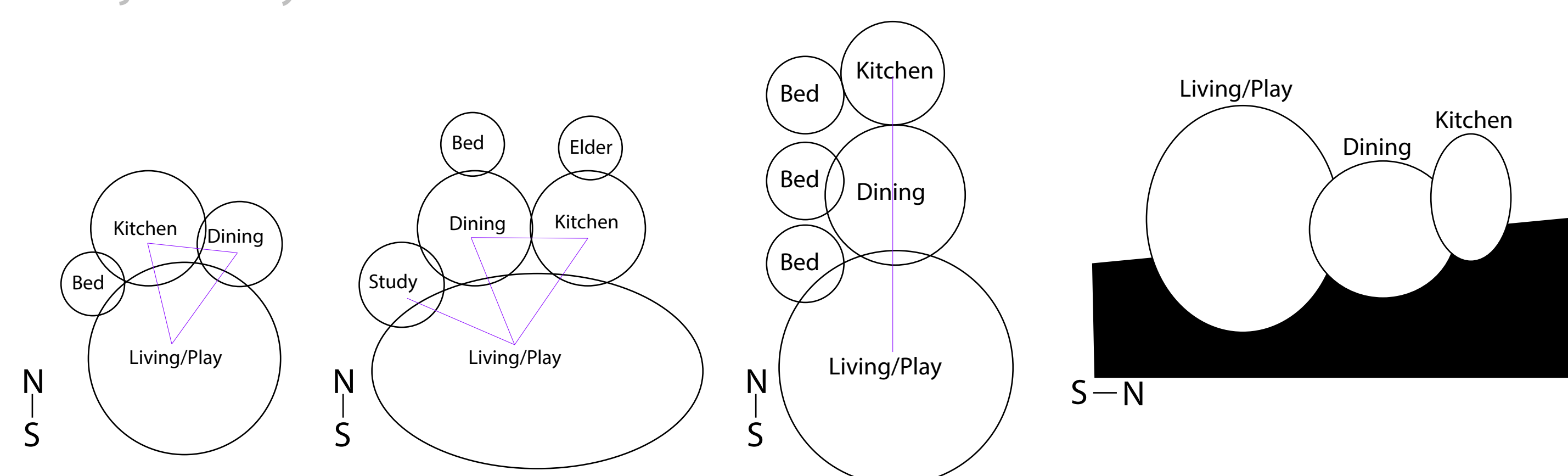
Age Group	Temp	rH	wind
Elder	Living	83F	64%
	Sleeping	80F	62%
	Cooking	83F	60%
	Dining	83F	60%
	Exercise	84F	64%
Adult	Living	72F	60%
	Sleeping	77F	53%
	Cooking	77F	55%
	Dining	72F	58%
	Exercise	68F	48%
Young	Living	68F	50%
	Sleeping	72F	53%
	Cooking	68F	55%
	Dining	70F	53%
	Play	68F	48%

I want to unify the generations to coexist in the same space for a long period of time than seeking comfort in another space by heat stratification.

People experience different sensations even when they are in the same thermal conditions. They will leave one space, and go to their own spaces. Age segregation between generations is growing. People also like to feel needed. The spaces are connected visually even if they are separated physically.

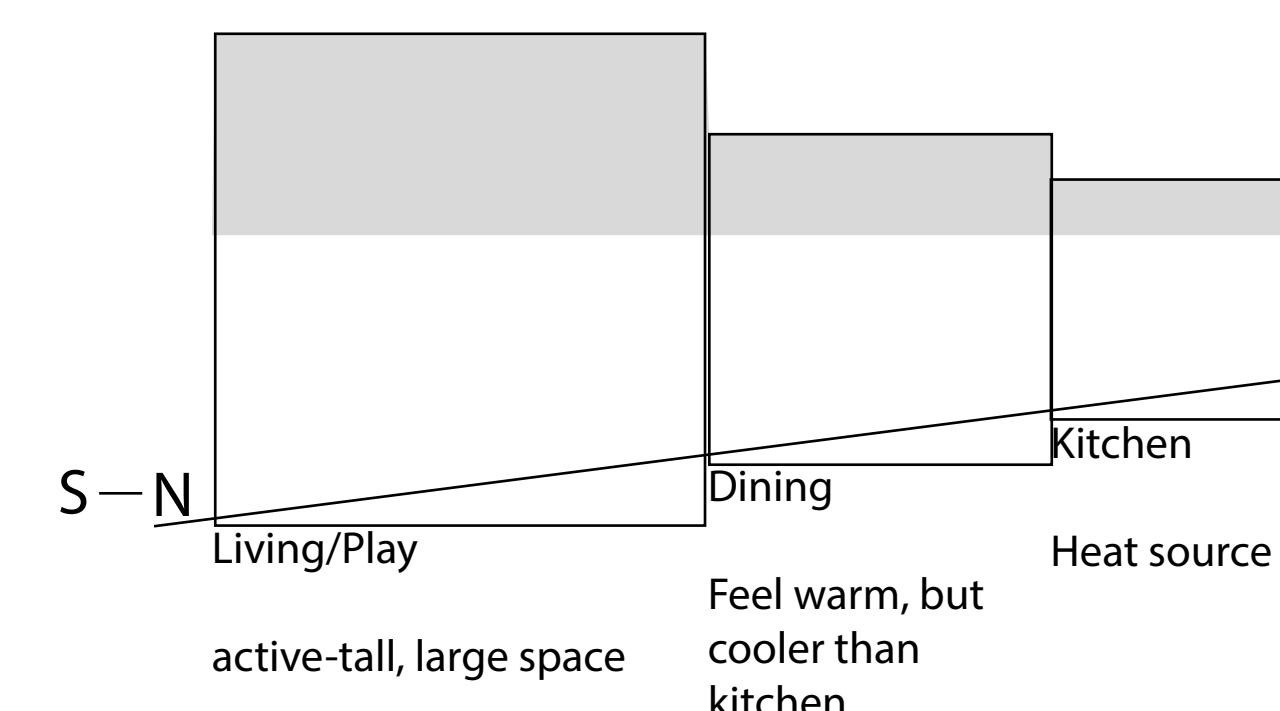
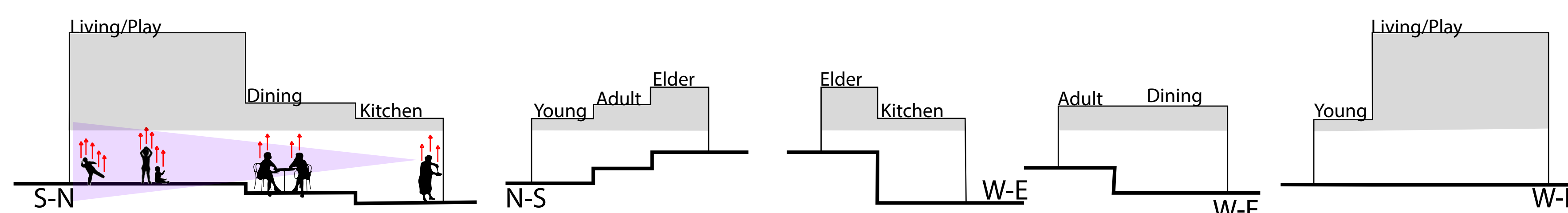
The young can be watched by the adults and elders from a distance, or the young can watch over the elders, and so on.

Adjacency



Dig~6.56 ft into the ground, the temperature drops~5F-10F

Summer ~90F-105F June~105F dig, ground~85F big tall space
 Winter ~60F-75F Dec~60-65F dig, ground~65F smaller space



Convection of heat rising--Stratification of heat to move or contain heat

Kitchen is one heat source, so it's the smallest and lowest so the heat can travel up into the dining and living area
 Elders prefer warmer places, so they're placed at the top

Places with a lot of activity, or the side being exposed to the sun the most is a larger space to let the heat away from the activity

