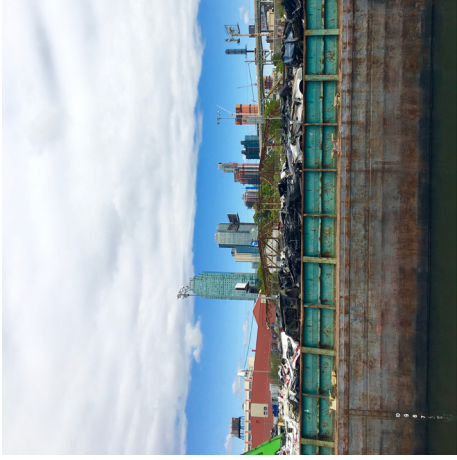




Circle Line Field Trip Photos Related to Sewage Treatment Plants, Water Pollution etc.



Guest Speakers Notes: Highlights & Water-sampling Process Photos



Interesting Fact: Hudson River contains enormous collections of plastic in the water

Guest Speak Quote: Fail faster to succeed sooner

Micro Fiber Issue: Problem is synthetic clothes (“plastic clothes” e.g. Nike) is shedding into our water ways. Every time we wash these types of clothes, 1mm or 1,000 microns get washed off. With each and every Patagonia jacket being washed, each time 81,000 micro fibers are being lost into the water ways, causing the micro fiber issue.

Circle Line Water Sample Locations Map

