

# Value

Degrees of light and dark; the light and dark characteristics of color; the amount of light reflected by a particular color

# Value Scale

A progressive range showing the incremental and consistent steps of change between extreme light and extreme dark.

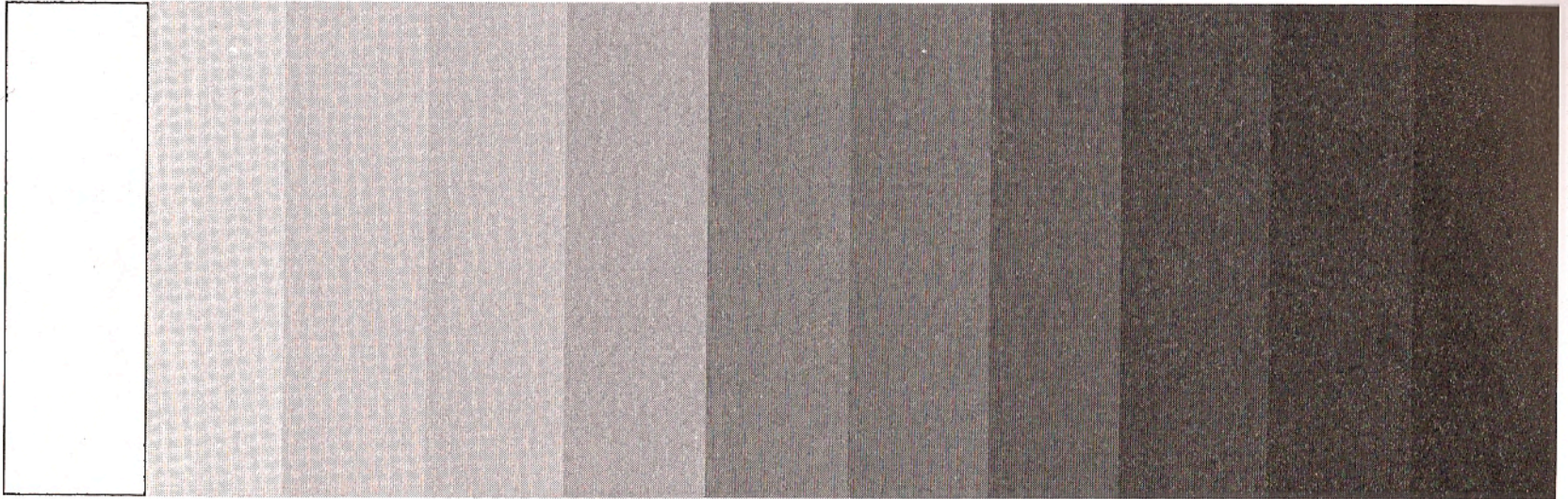
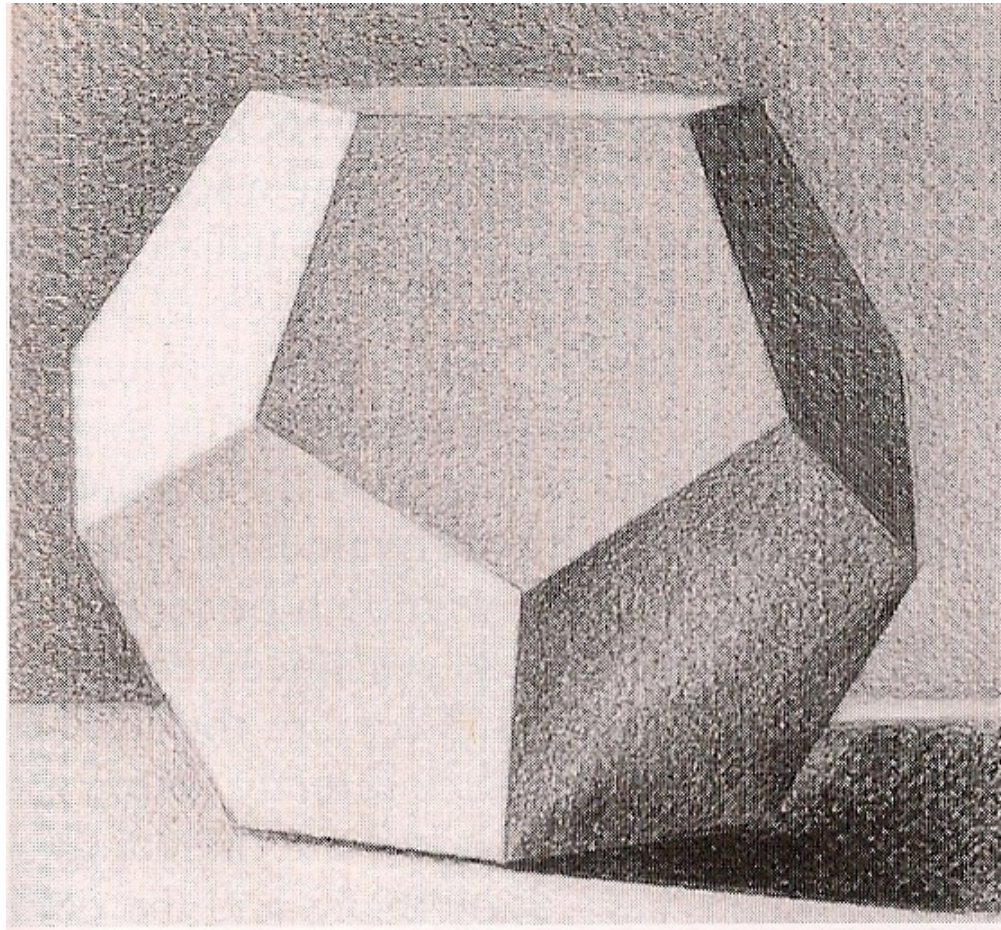
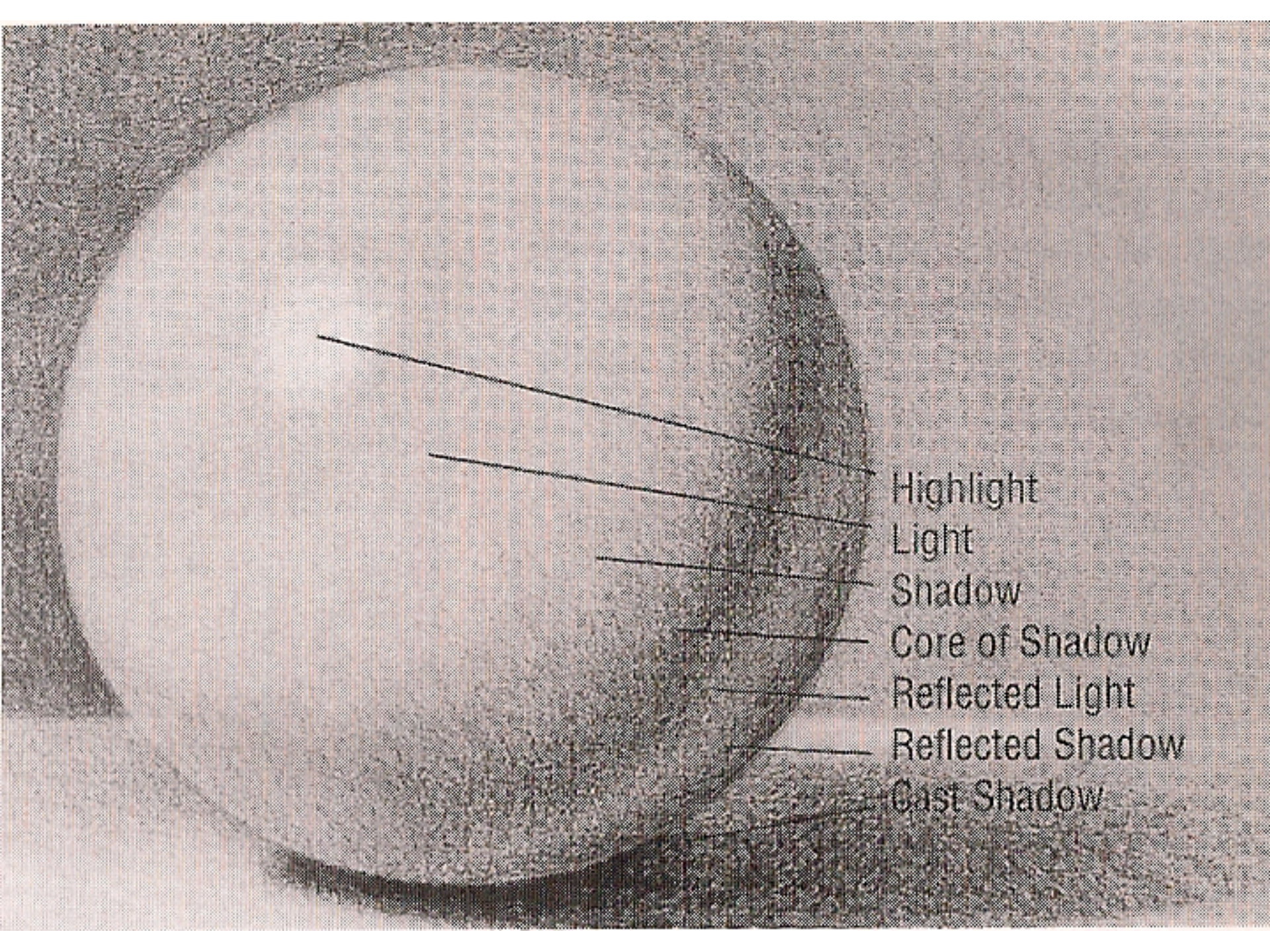


FIGURE 4.10



# Form Light and Shadow





Highlight

Light

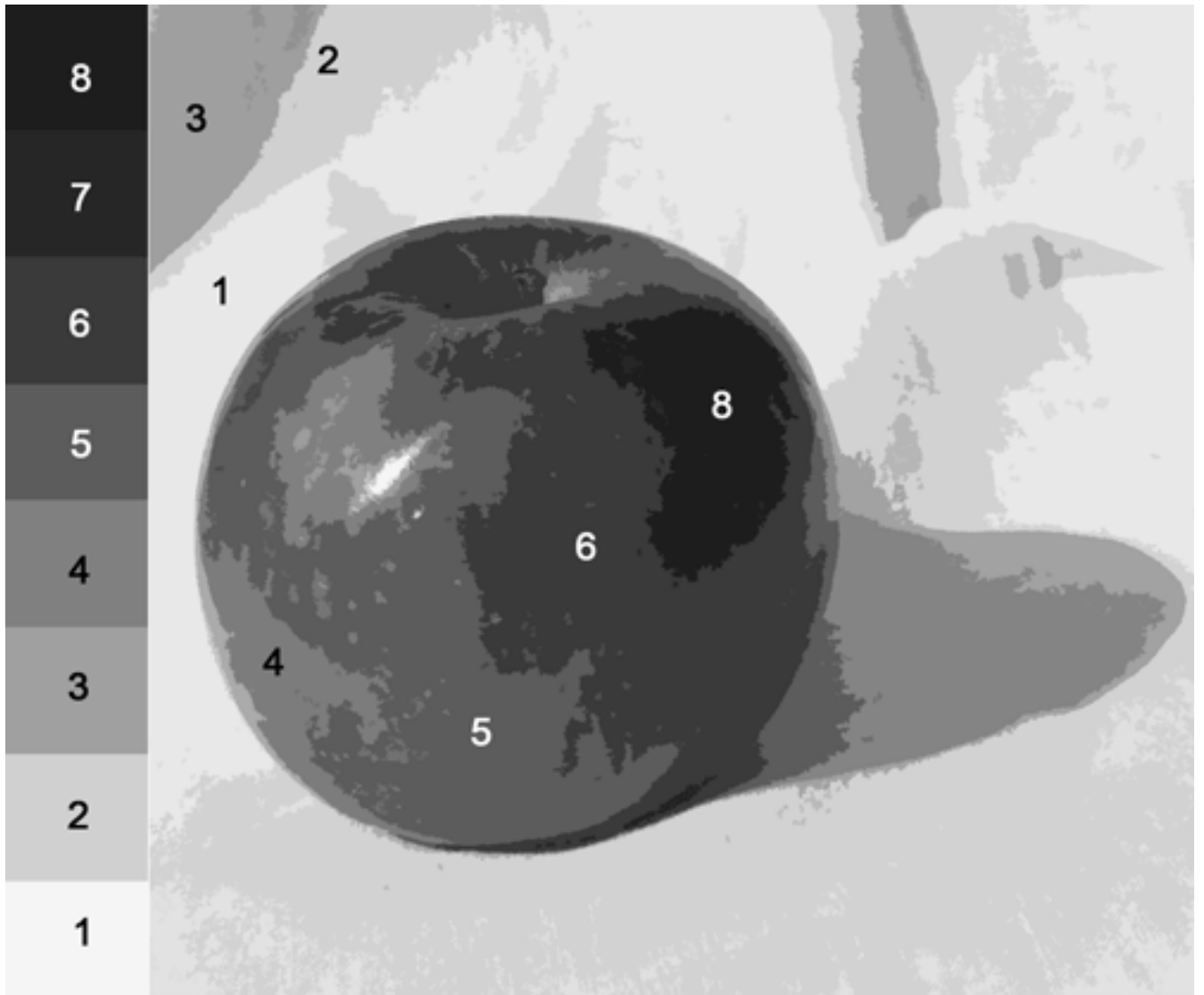
Shadow

Core of Shadow

Reflected Light

Reflected Shadow

Cast Shadow



# Chiaroscuro

From chiaro (light) and oscuro (dark), the continuous gradation of value to create the illusion of three-dimensional form





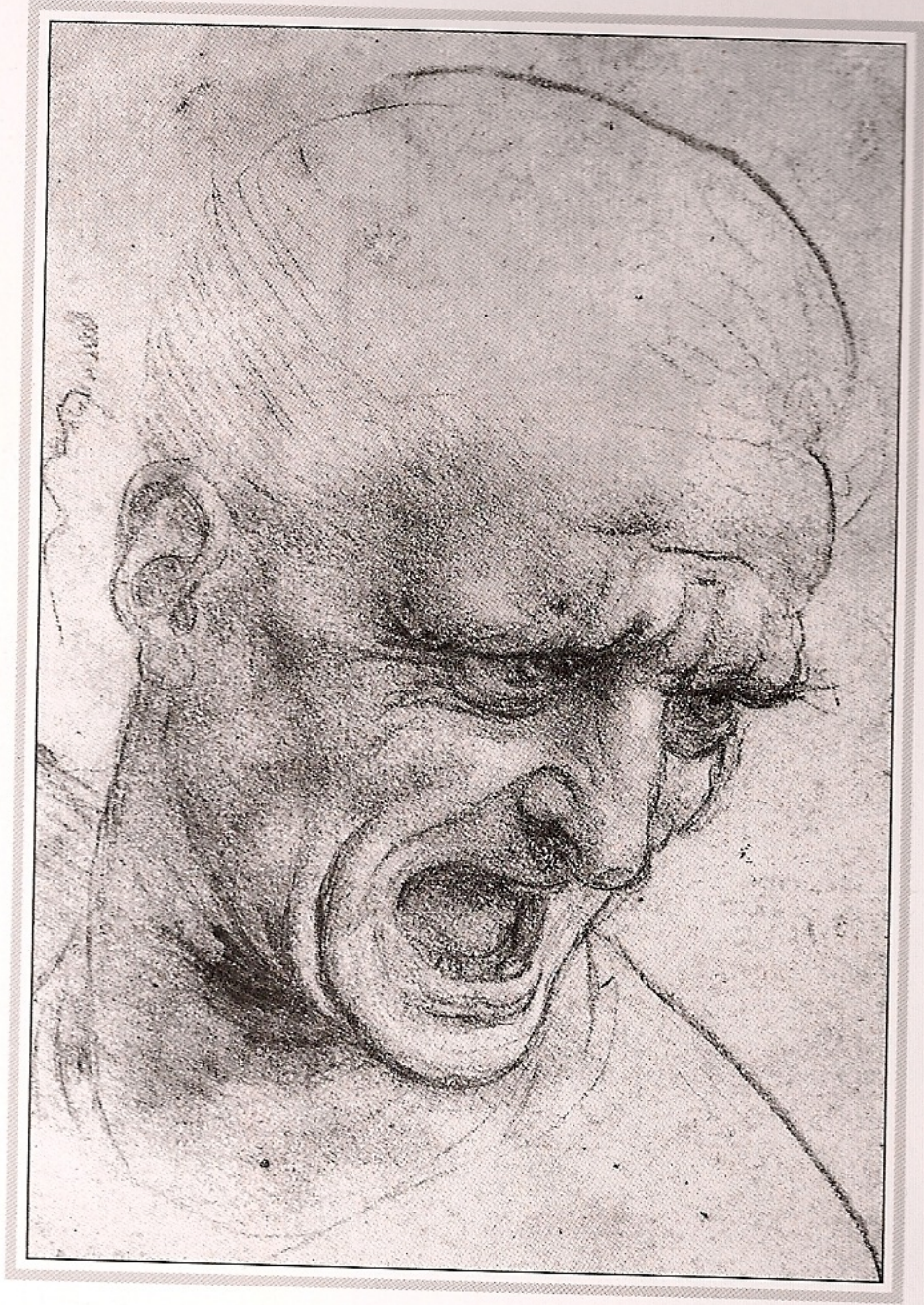












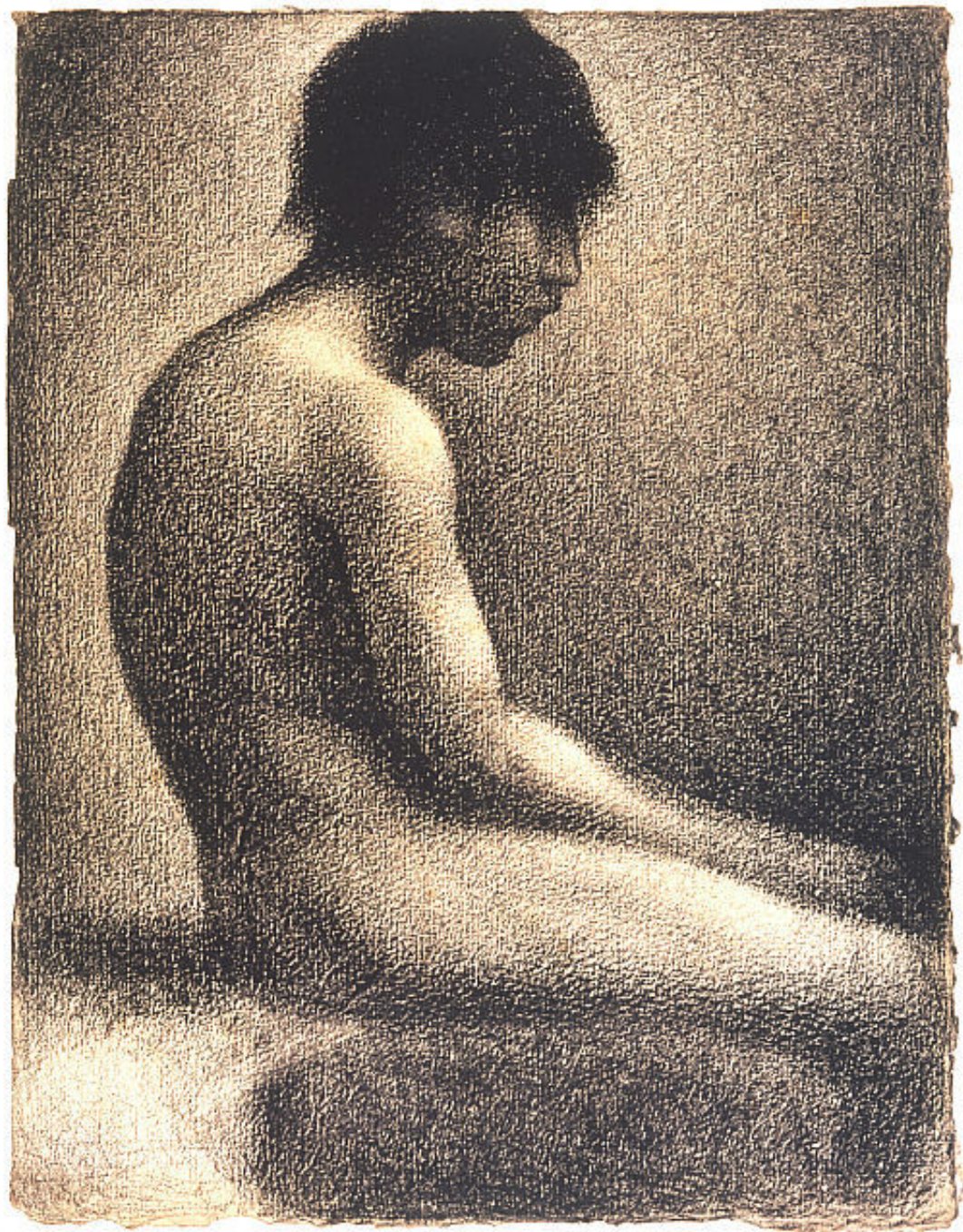


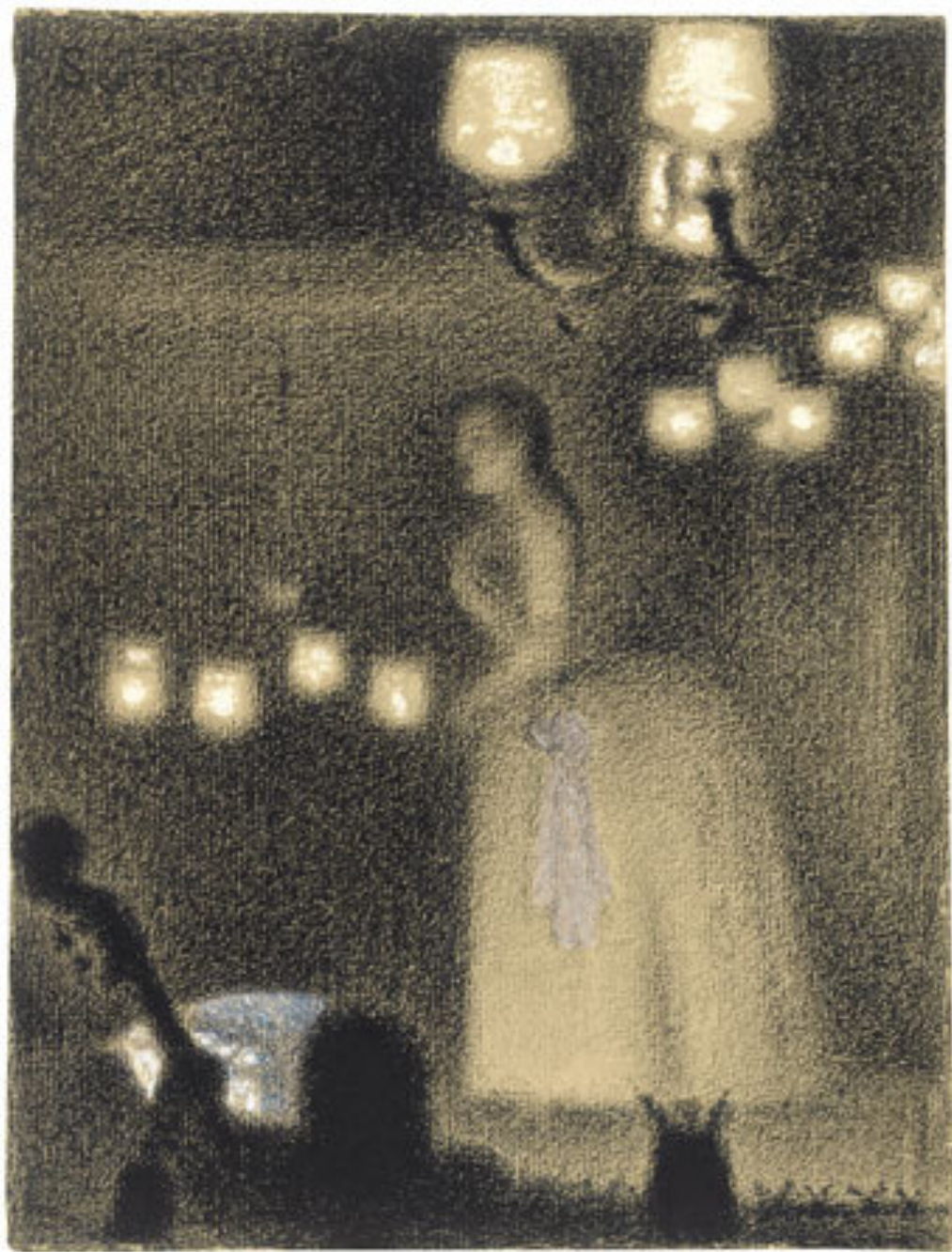






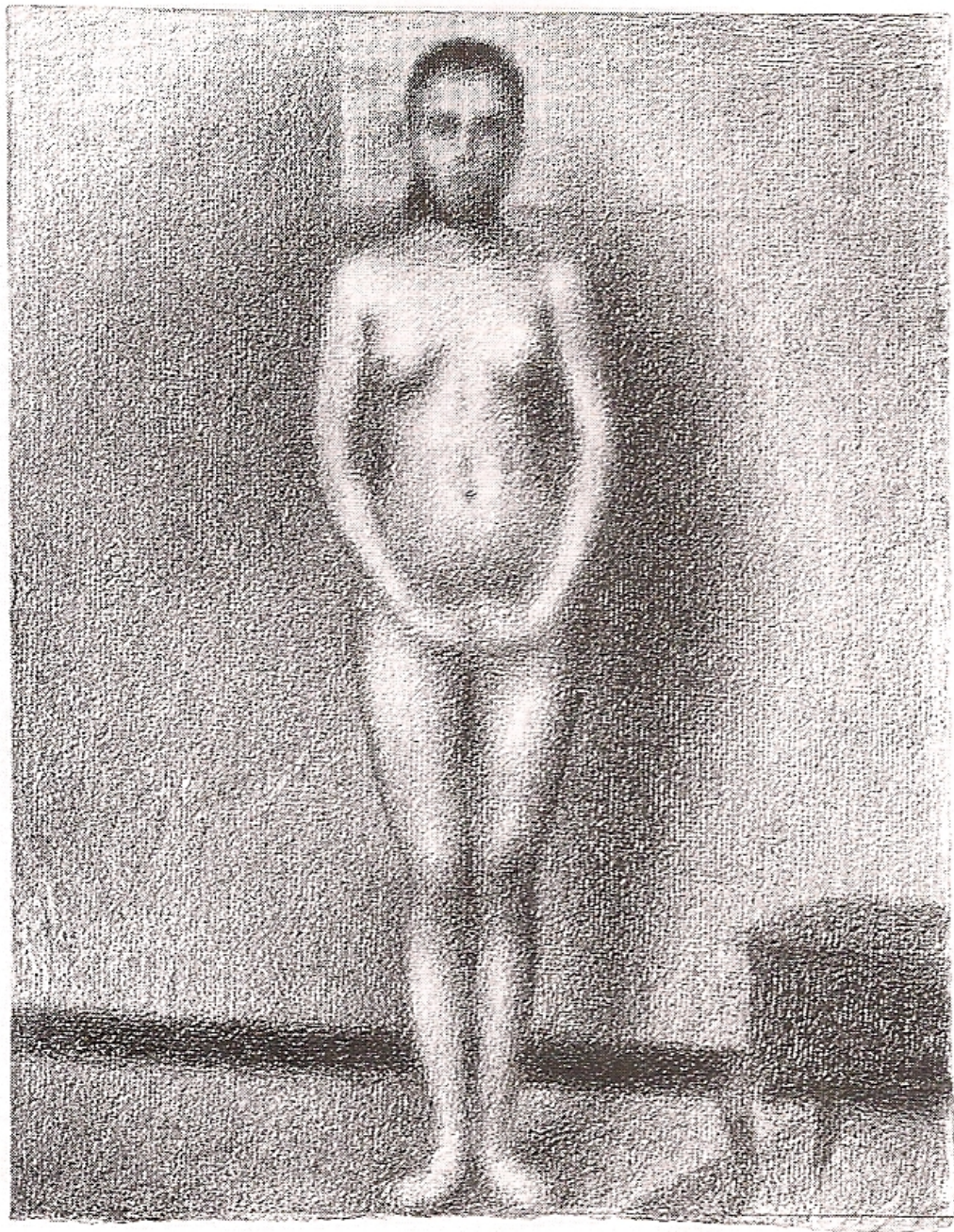
FIGURE 6.25

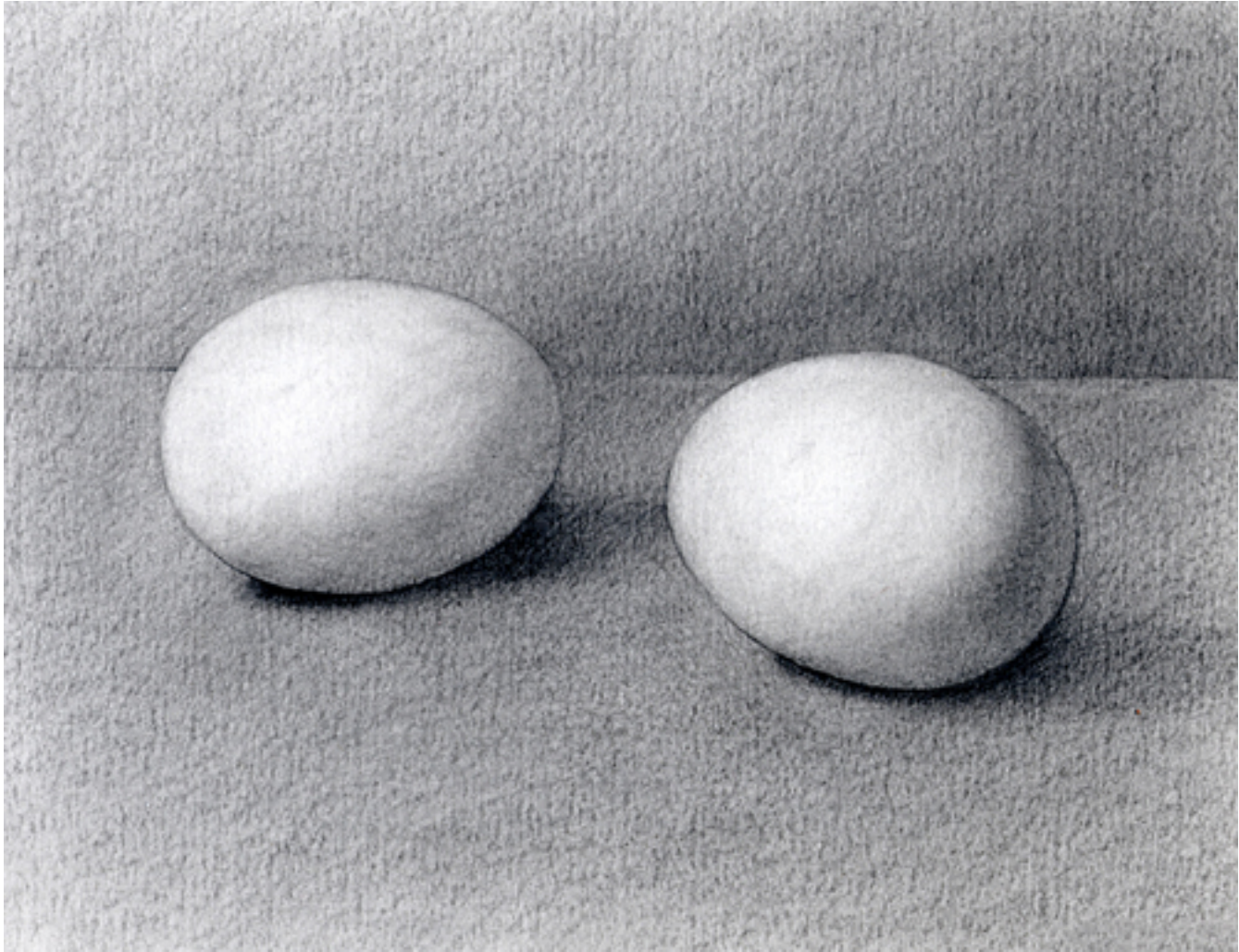
















Robert Longo











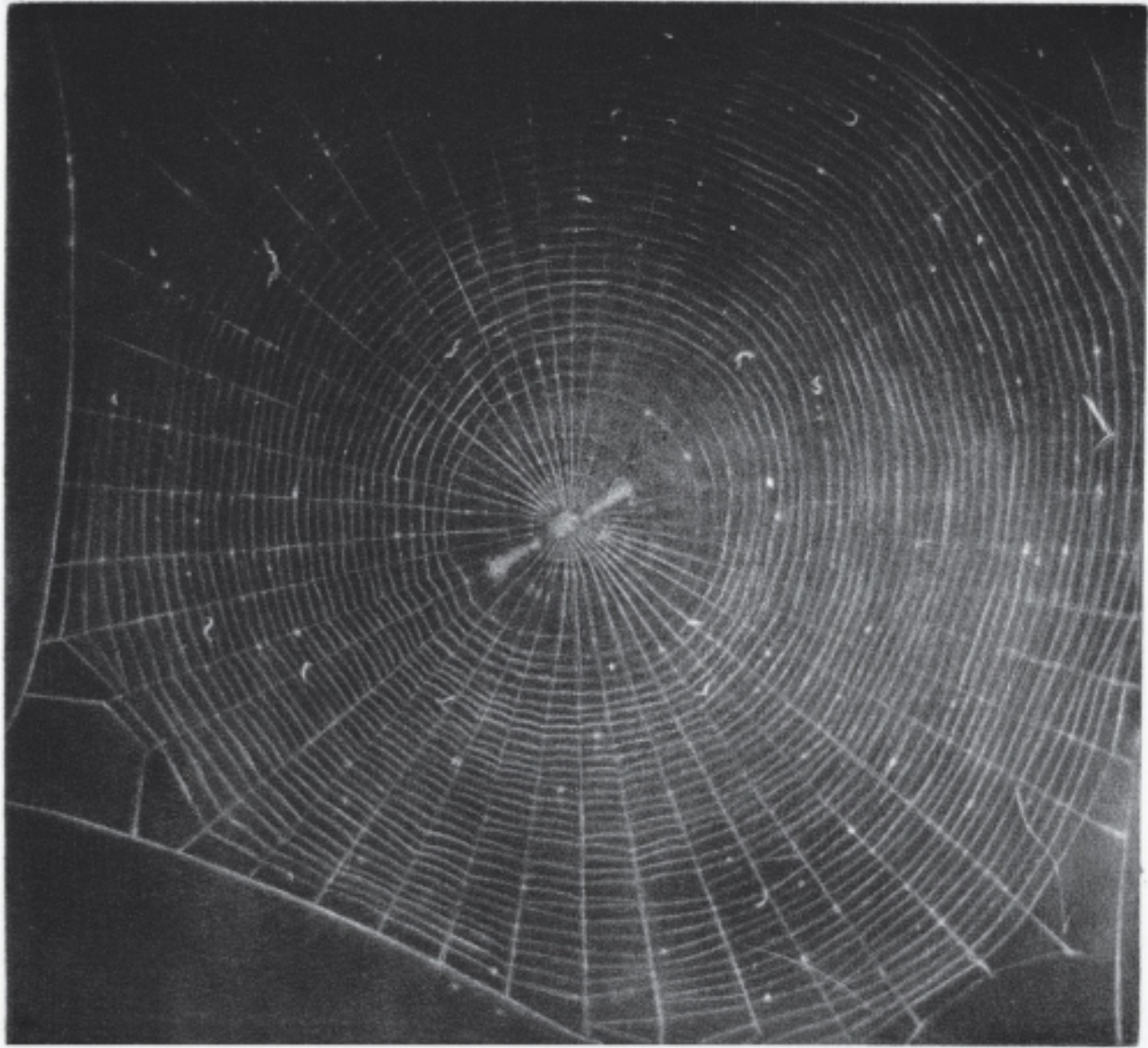
# Vija Celmin

- "I did a lot of drawing of course [as a child]. You know we all did drawing, that's how it started. You know you're little, you start drawing. Just keep drawing. It sort of makes a certain kind of life. I guess drawing and reading, I used to read a lot. I made a sort of world. Read a lot, draw a lot, that's what I used to do."









Antonio Garcia Lopez





