

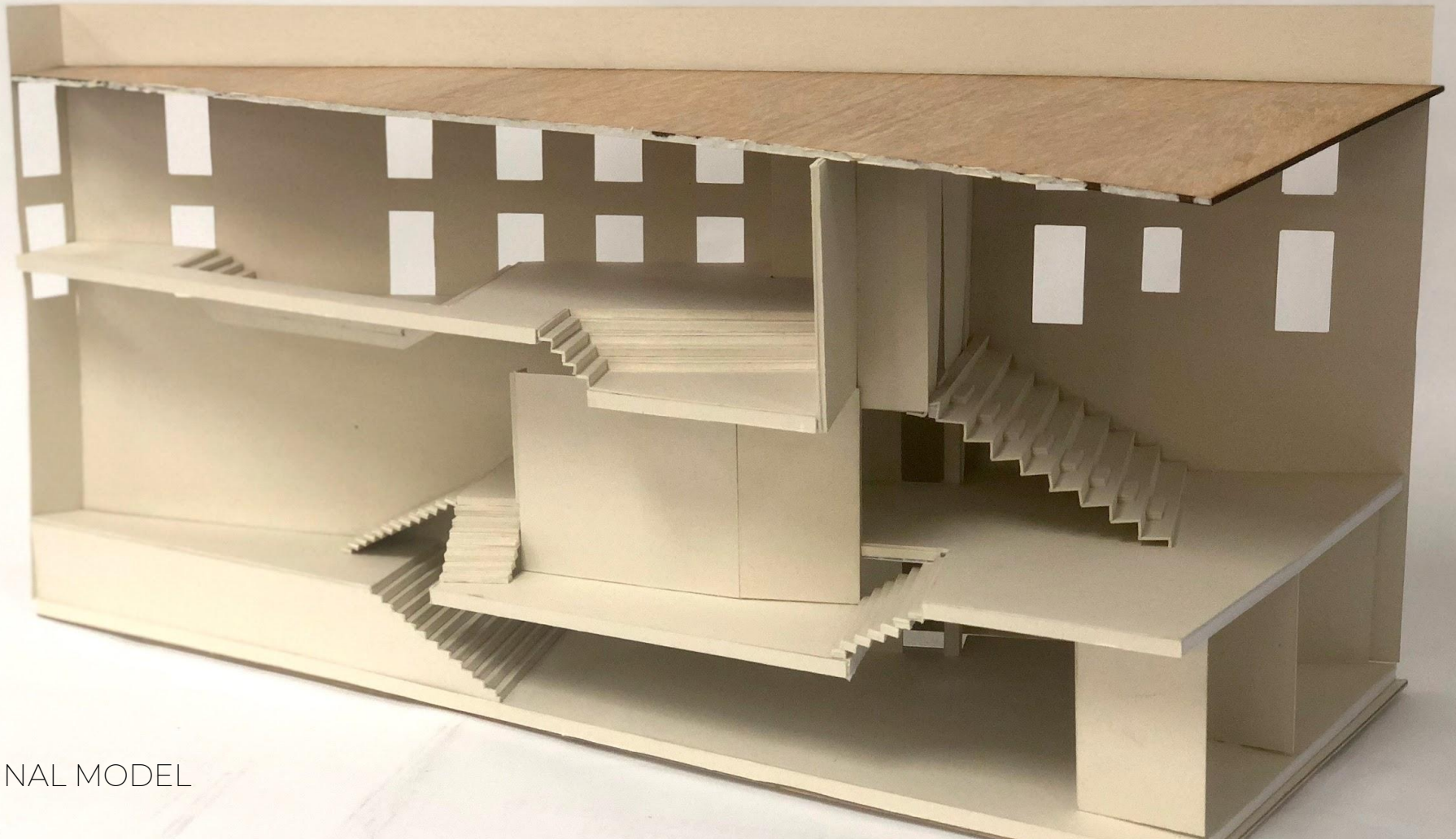


LAMBENCY

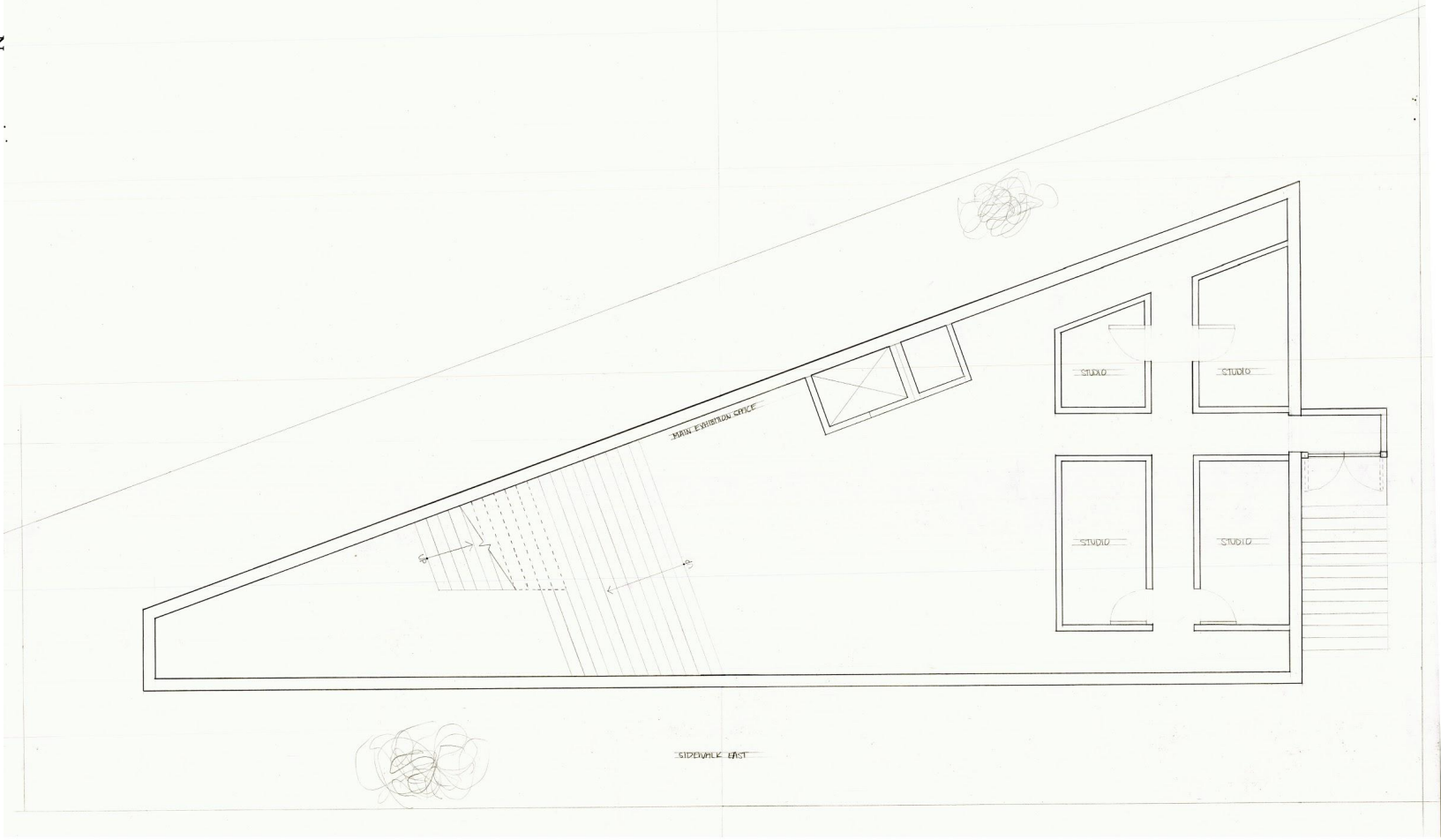
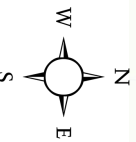
The unusual shape and geographical location of this site provides a unique experience of natural light within New York City due to its limited exposure to southern sun, and its overexposure to western river views and sunsets. The building invites projection artists to explore this rare relationship between natural and artificial light upon both its interior partitions and exterior city backdrops.



INTERNATIONAL ARTISTS WITH
DIVERSE EXPERIENCES IN
PROJECTION ART AND
LIGHTING DESIGN

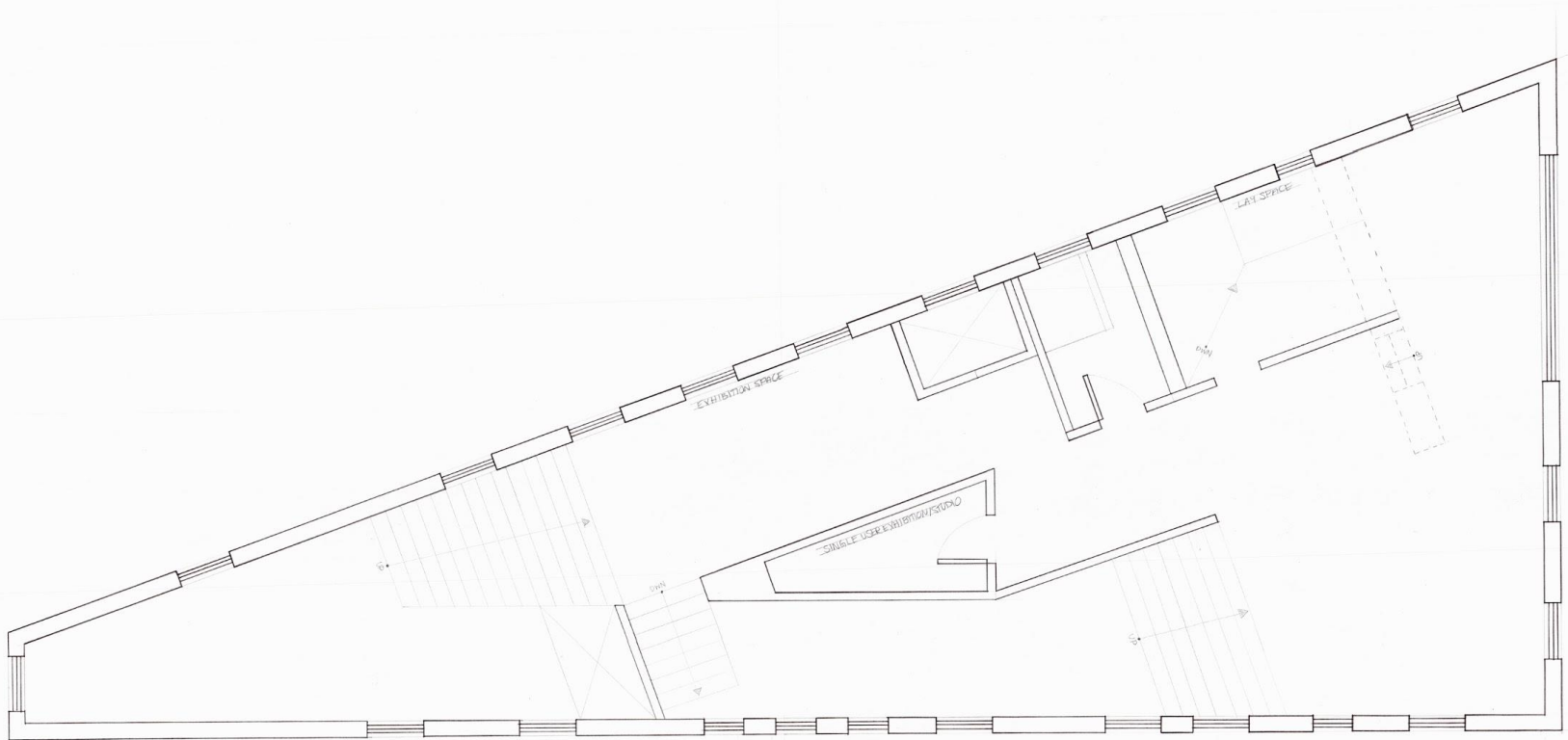
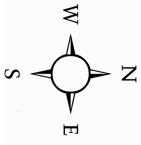


FINAL MODEL

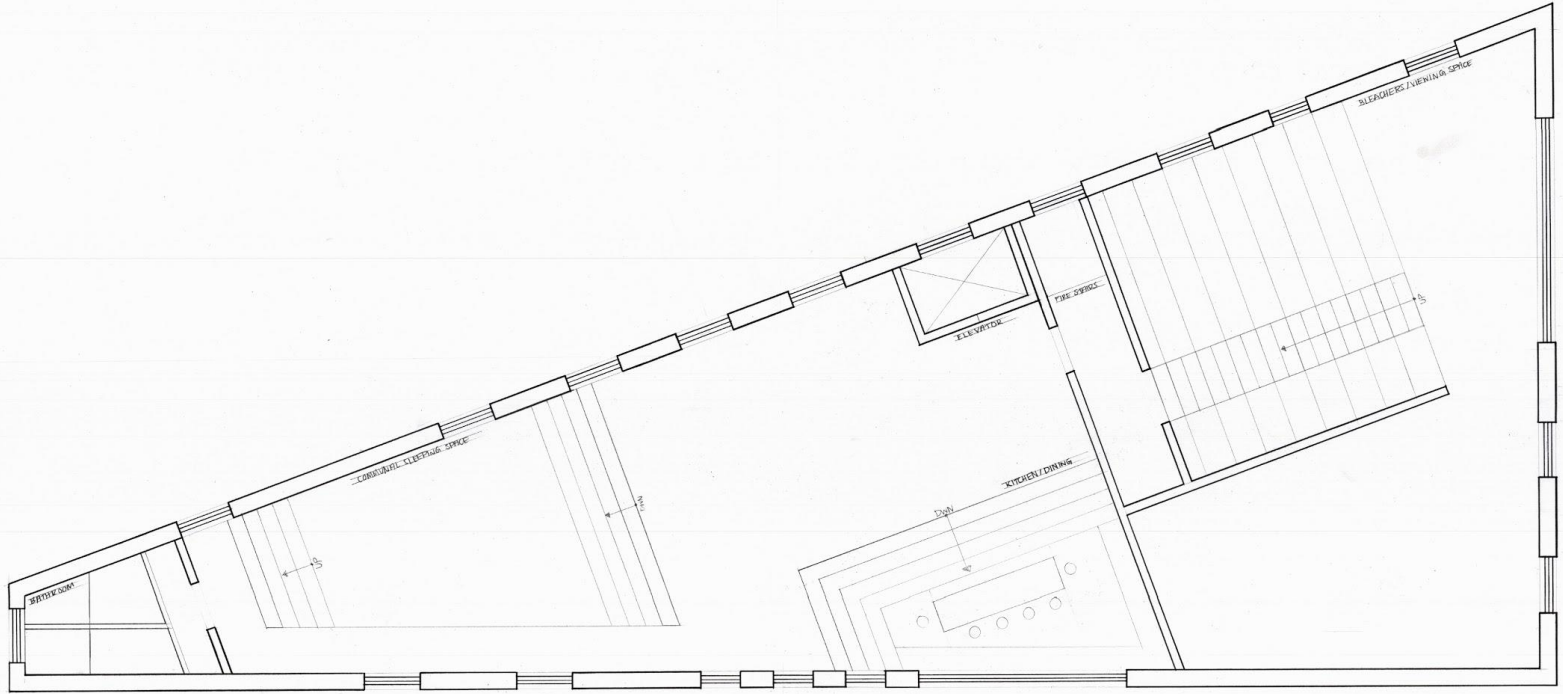
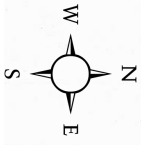


DRAWINGS

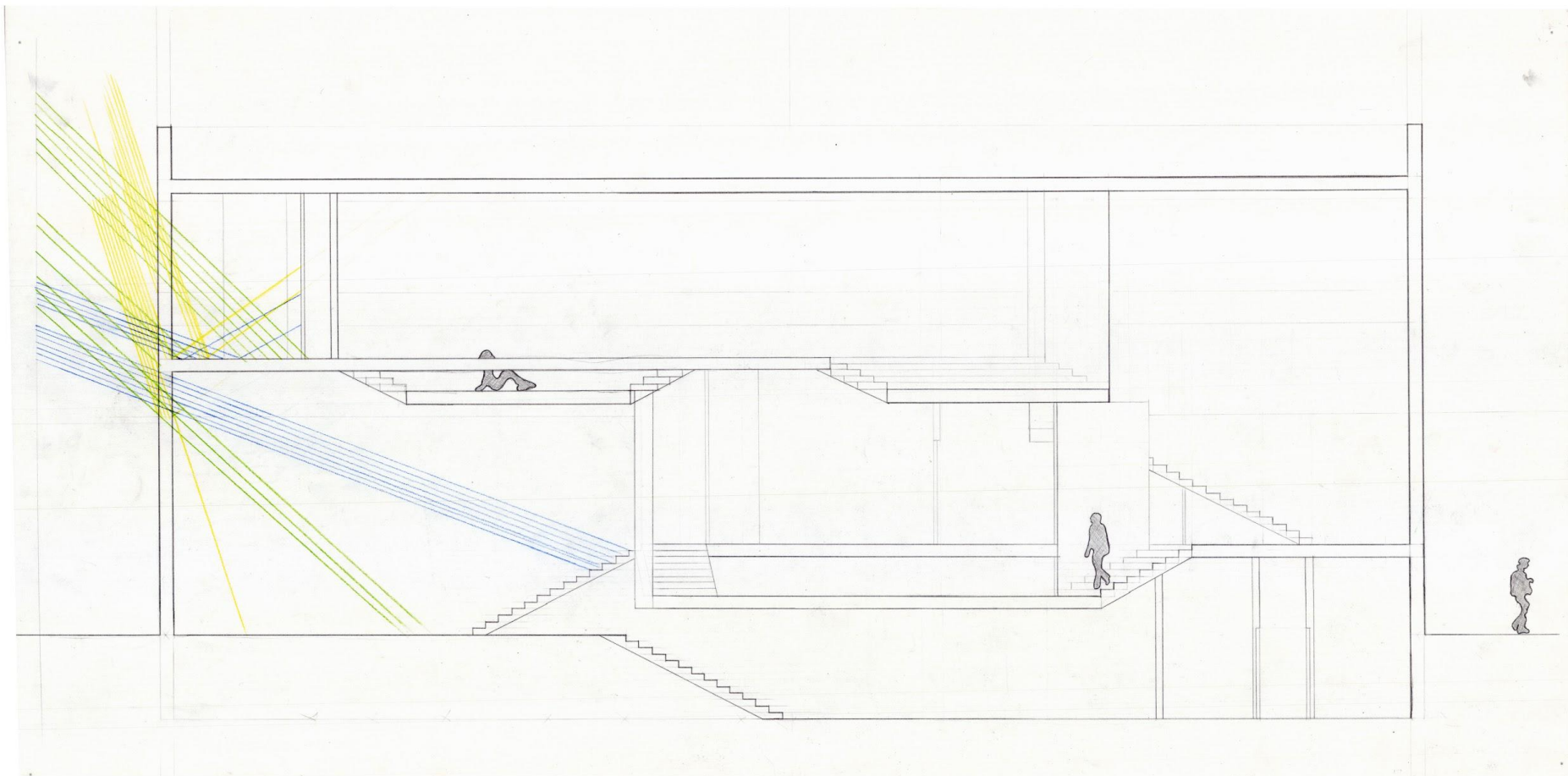
PLAN - FIRST FLOOR



PLAN - SECOND FLOOR



PLAN - THIRD FLOOR



NORTH - SOUTH SECTION



EAST - WEST SECTION



LIGHT STUDIES: FINAL MODEL
PUBLIC ACCESS ENTRY WAY - BELOW GROUND



PLATFORM BETWEEN FIRST FLOOR AND SECOND



BLEACHERS FROM SECOND FLOOR TO THIRD



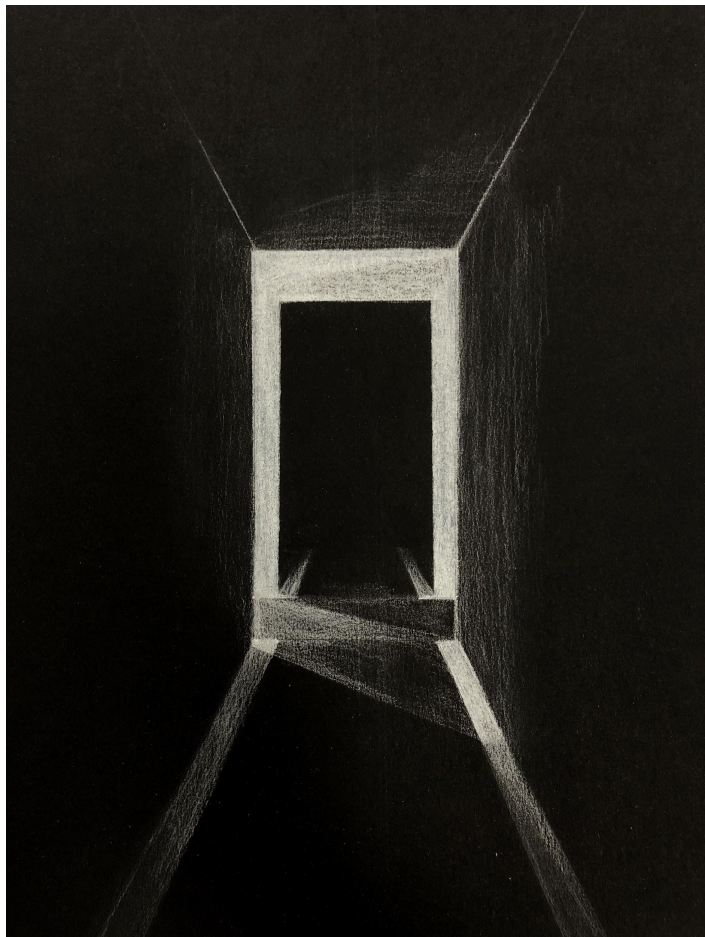
BLEACHERS FROM SECOND FLOOR TO THIRD



THIRD FLOOR LIVING SPACE PITS

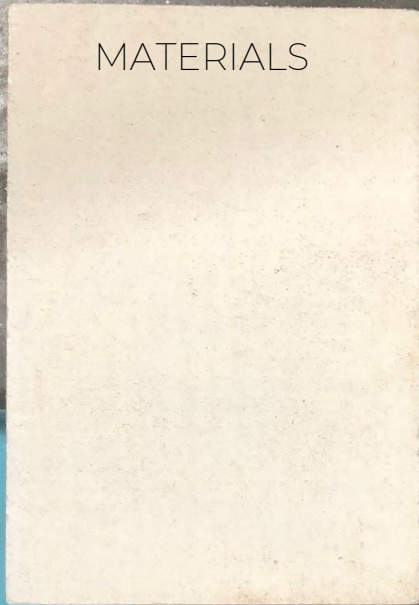


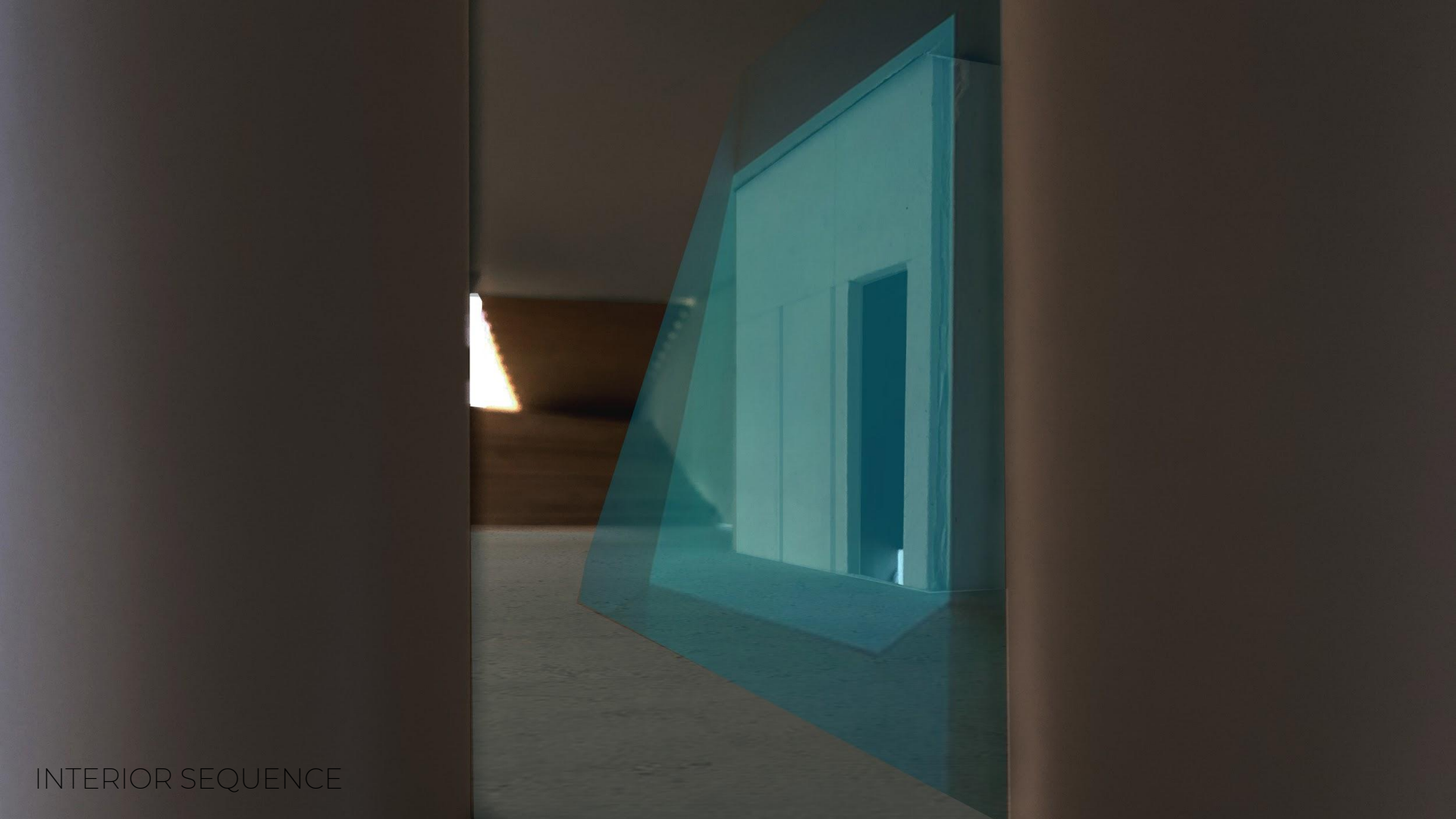
THIRD FLOOR WINDOW DETAIL



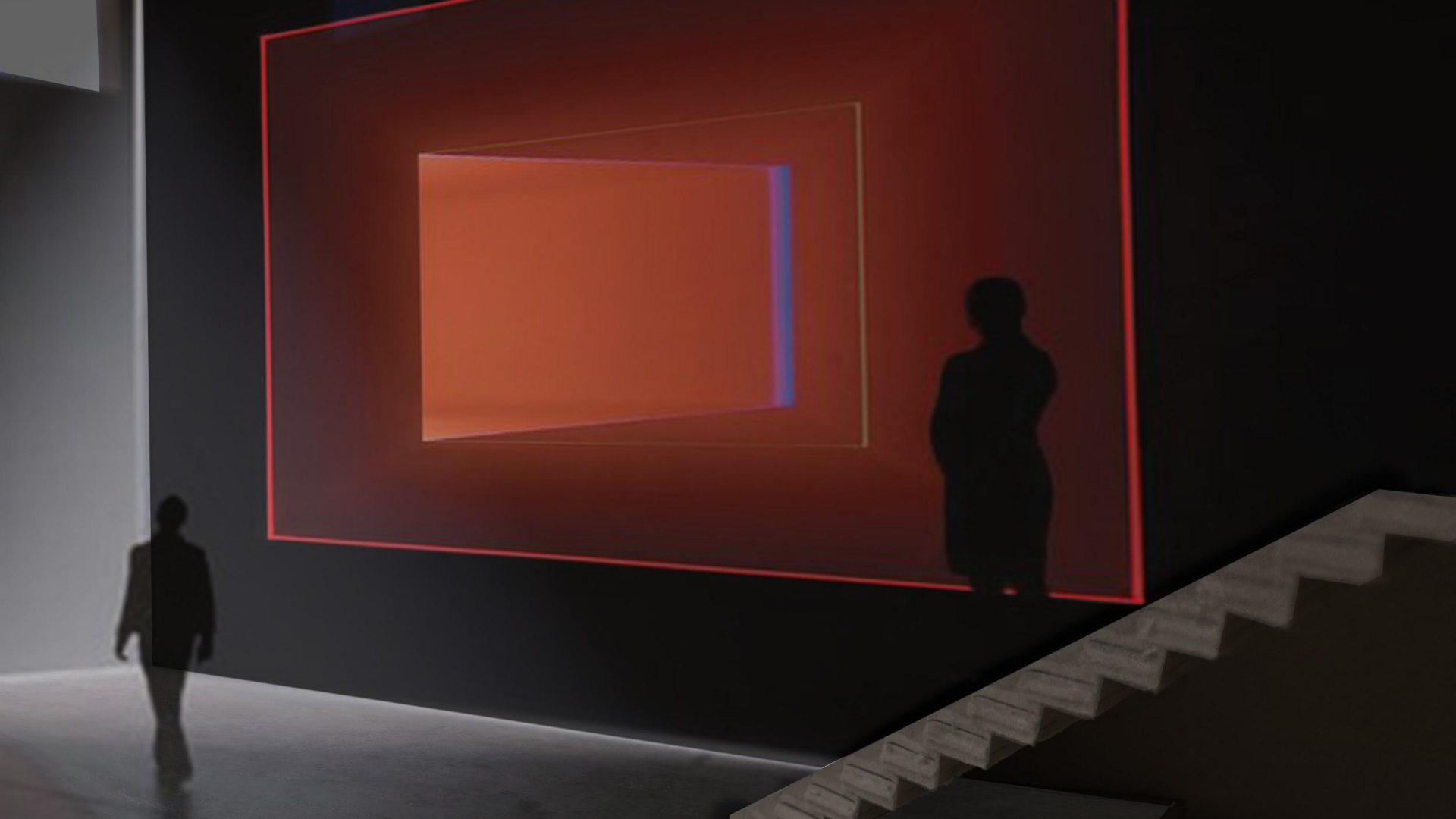
FINAL LIGHT STUDY RENDERINGS

MATERIALS





INTERIOR SEQUENCE

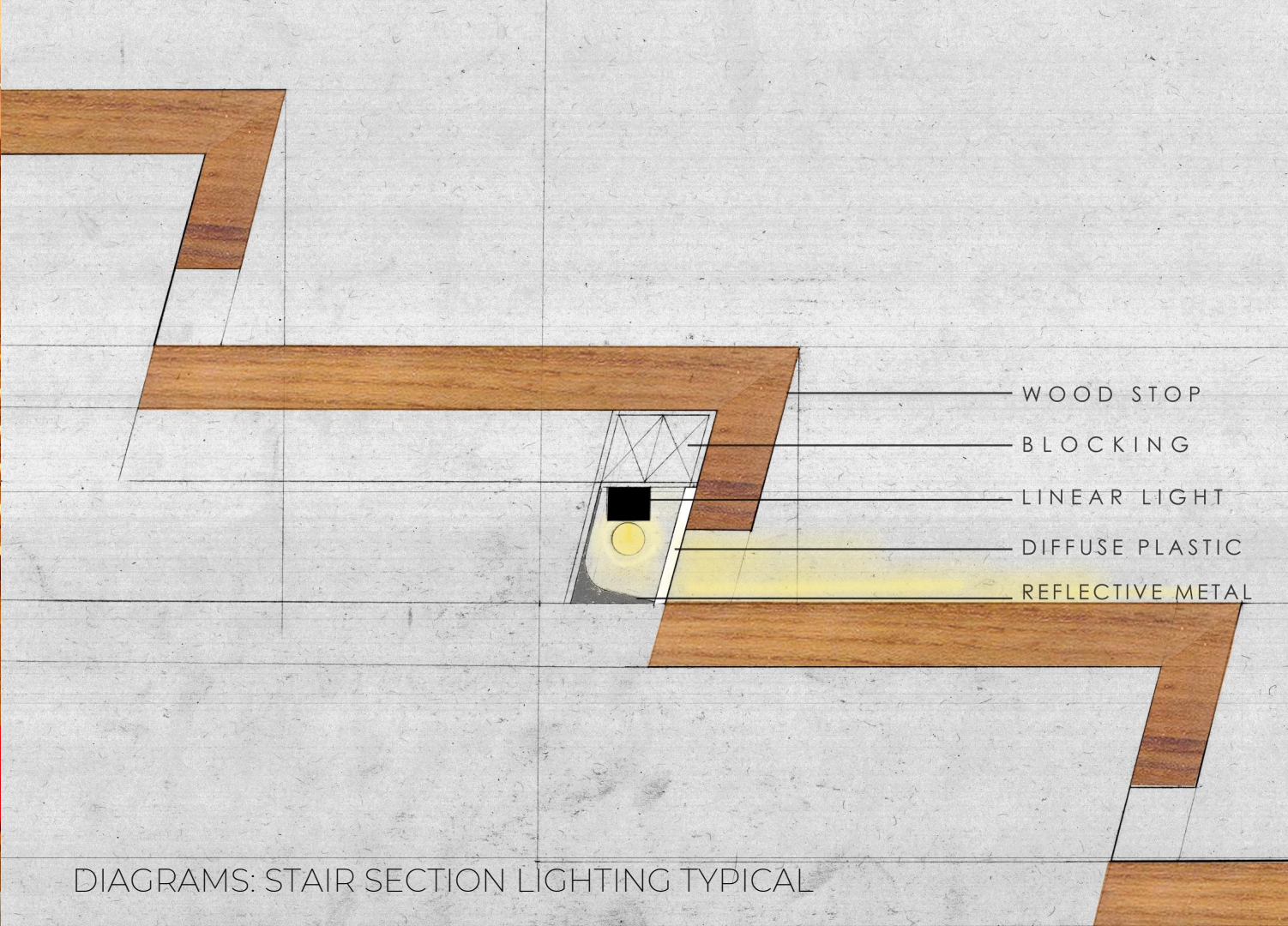






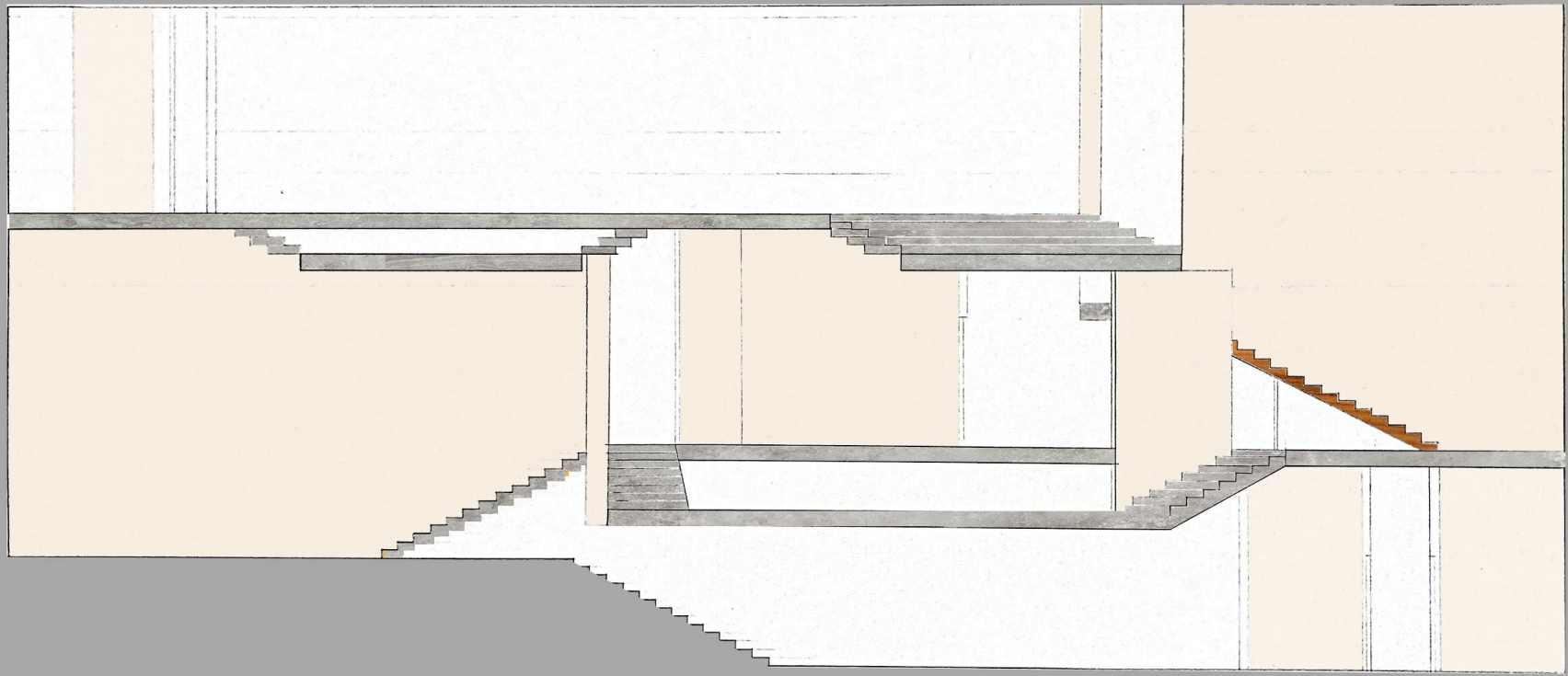




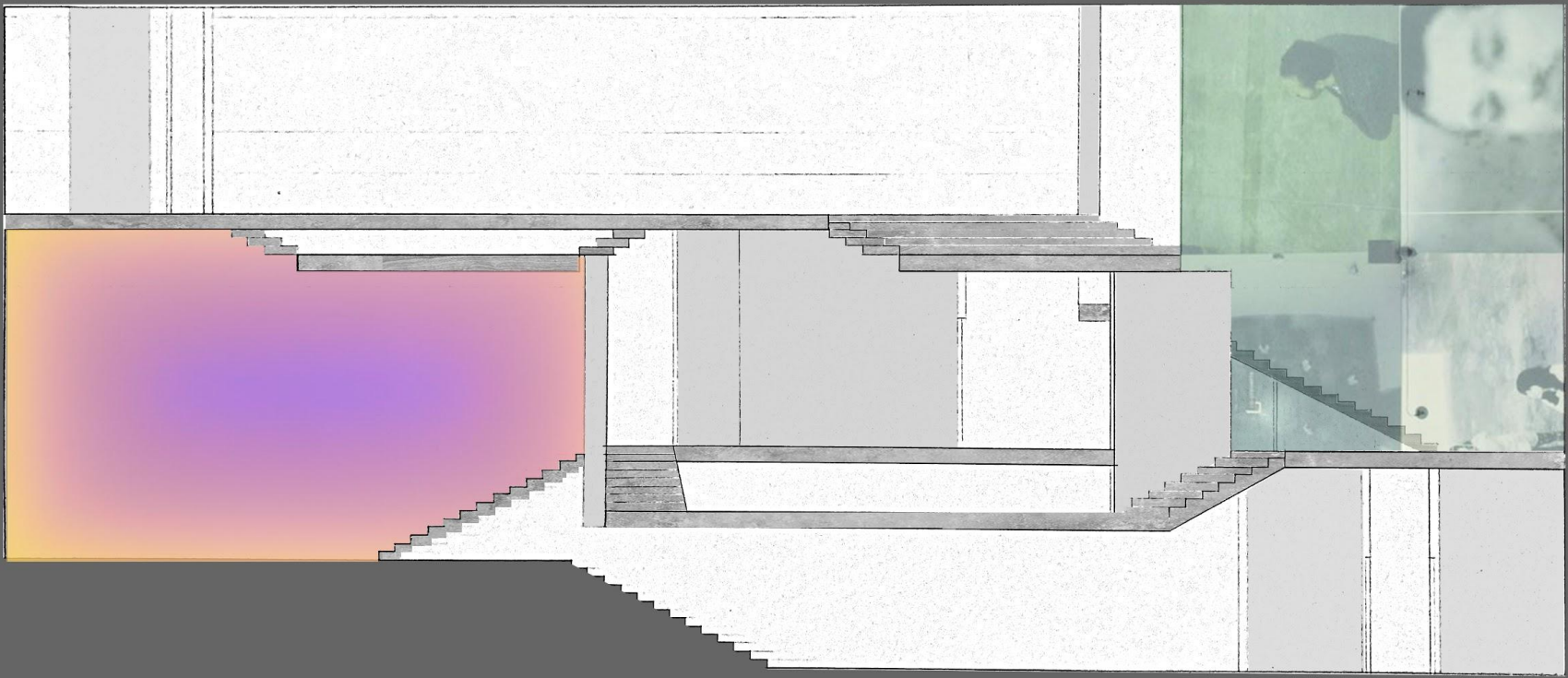


DIAGRAMS: STAIR SECTION LIGHTING TYPICAL

PROJECTION SURFACE DIAGRAM



PROJECTION DIAGRAM



PRIVATE

This architectural section drawing illustrates a building with three distinct levels. The top level is labeled 'PRIVATE' and features a sloped ceiling and a dark interior. The middle level is labeled 'PUBLIC' and contains a central vertical shaft and a set of stairs. The bottom level is labeled 'EXHIBITION' and is a large, open space with a sloped floor. The drawing uses a color palette of blues and greys, with a dark grey base. Silhouettes of people are visible at the bottom of the frame.

PUBLIC

EXHIBITION



N

W

E

S

SITE GEOGRAPHICAL LOCATION

14th Street
Park

The Diller - Von
Furstenberg Sundeck



SITE RESEARCH

1908

The Strand Hotel entertains male sailors. "[The building] accepts only men as roomers- In other words, it was a rough place-which might be why it had its 'all-night license' revoked in 1910."

1974

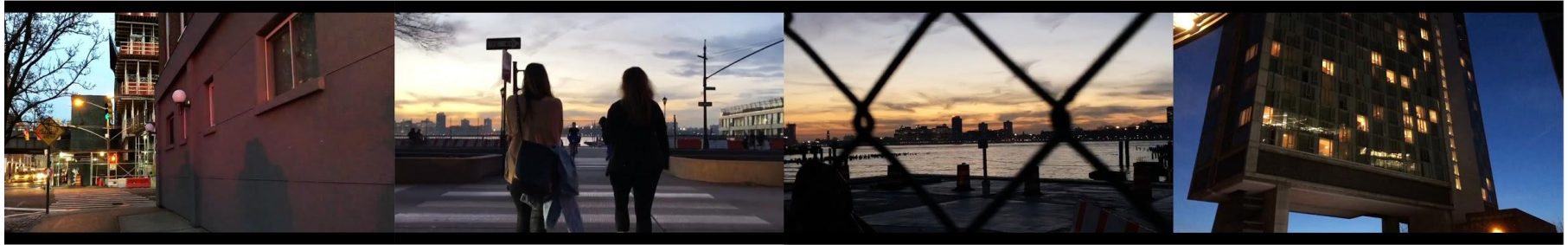
Split level, after-hours gay nightclub *The Anvil* opens on the north side of the building, with "the main floor containing a dance floor/performance area all painted black where everything would go on at once."

1986

The Liberty Inn, Manhattan's last hourly hotel resides on the site, and while "it's a far cry from the debauchery of the Anvil, it's the most unsavory place you'll find in a neighborhood that's scrubbed its down and dirty past clean."



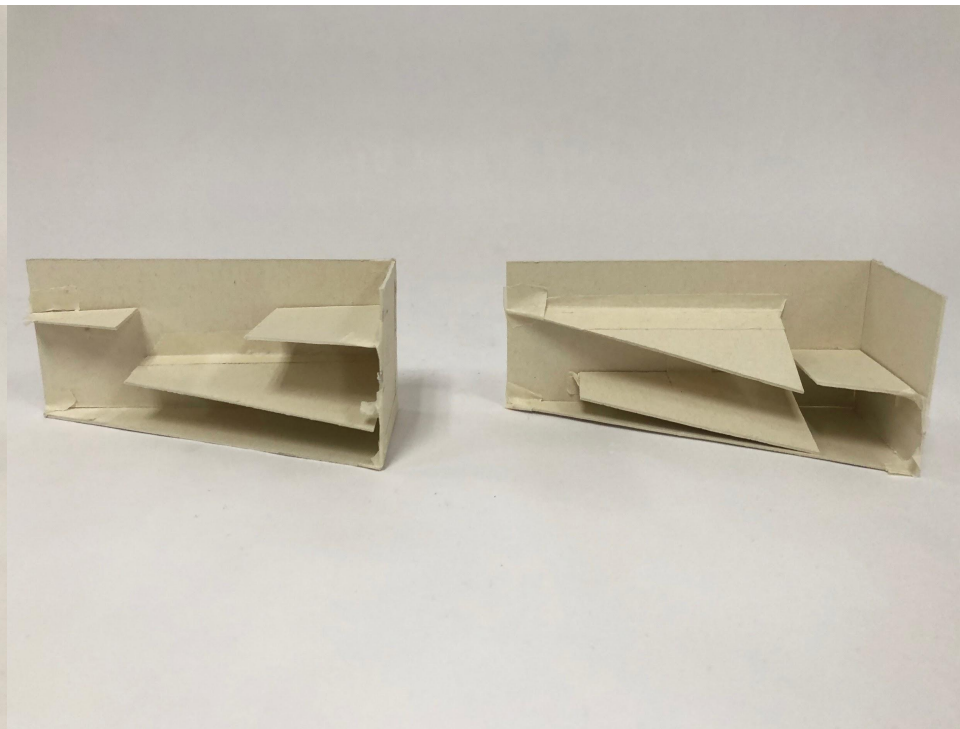
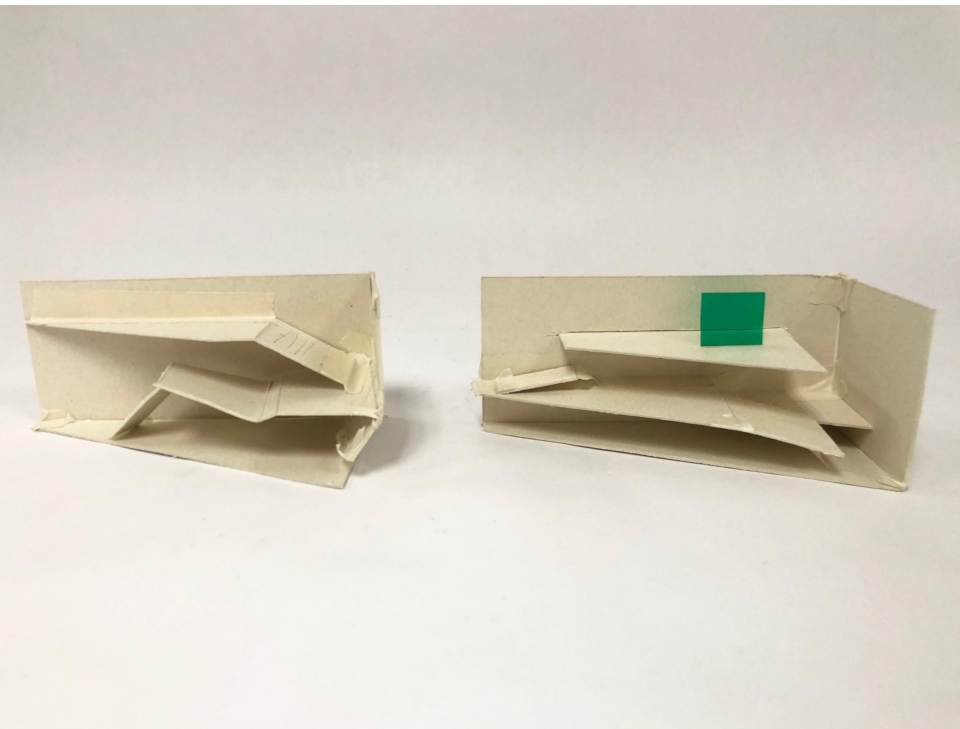
Delamater Square:
10th & 11th Avenues w. 13th Street



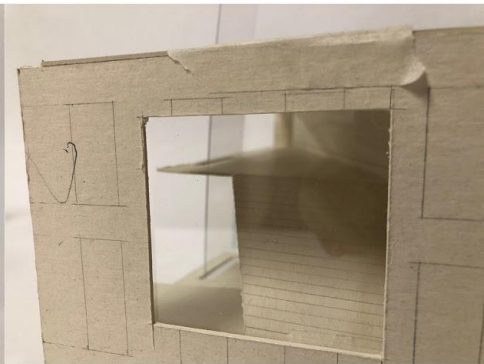
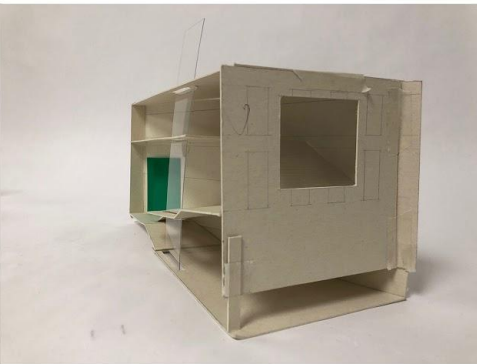
RESEARCH DIAGRAM: BUILDING STUDY VIDEO



Link to initial research and diagrams: <https://docs.google.com/document/d/lovOJxRcFO6zcXNAJ8gzTe51Kvqqx23HVRHPUBXu-C1c/edit>



PARTI & PROCESS MODELS

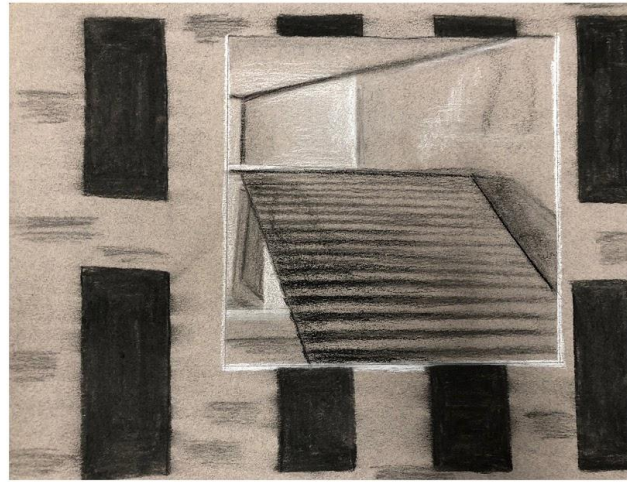
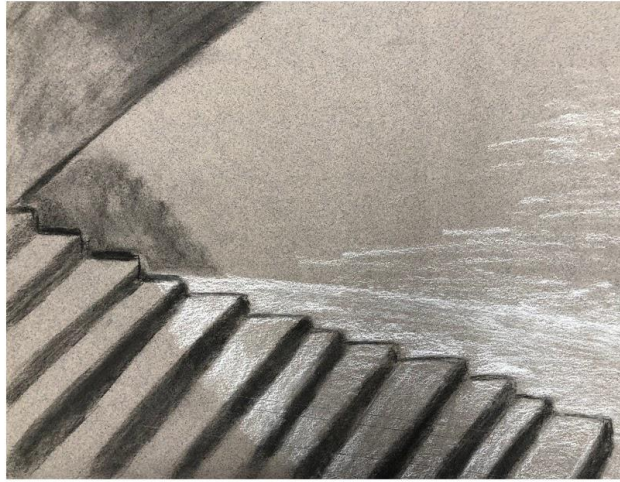
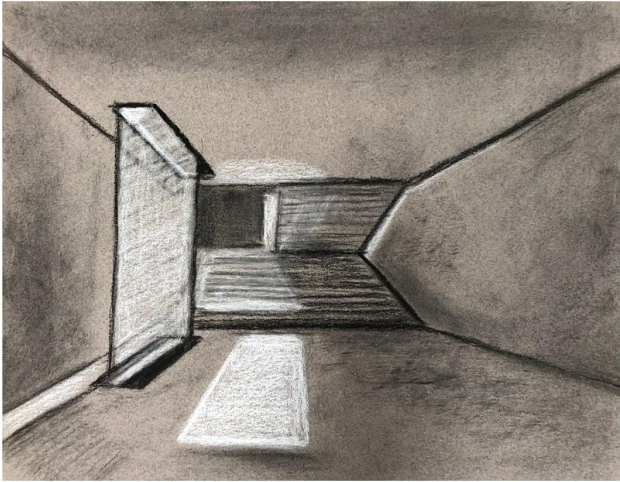




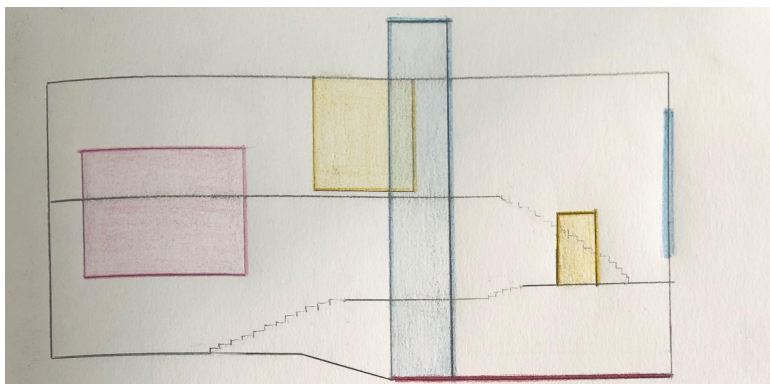
LIGHT STUDIES PROCESS MODEL: MATERIALS



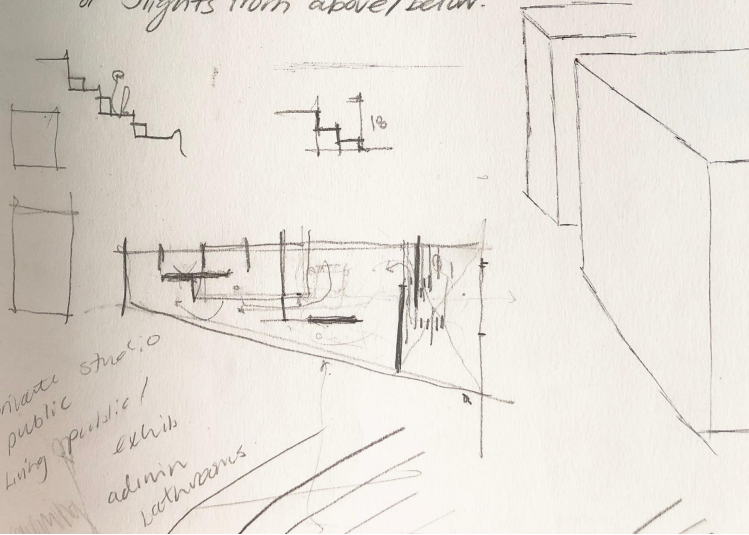
LIGHT STUDIES PROCESS MODEL: FLOOR PLATE EXPLORATION



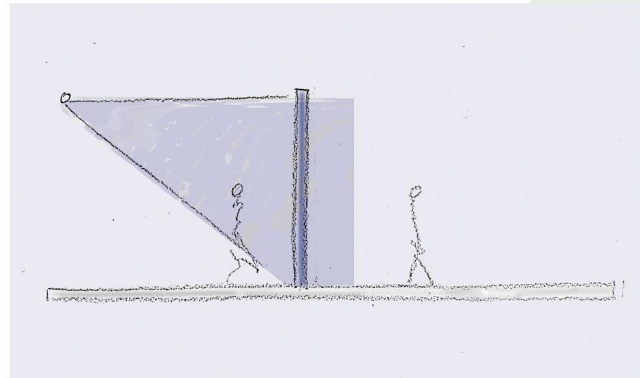
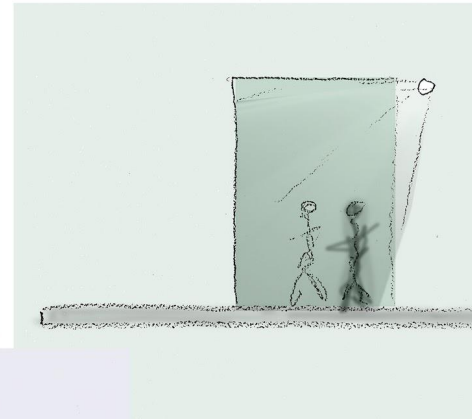
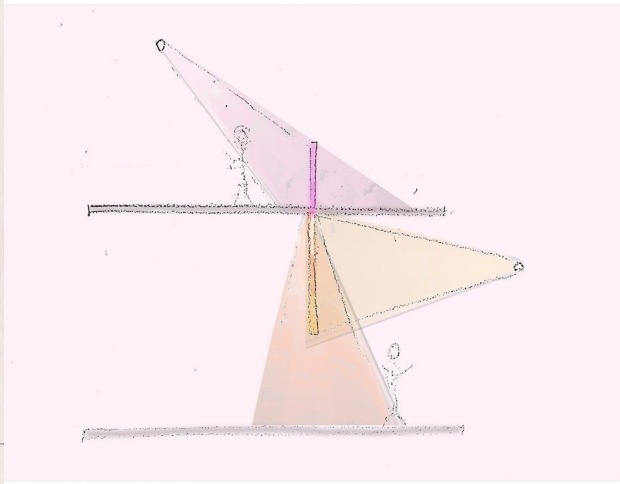
PROCESS: LIGHT STUDY RENDERINGS



- programming space
- colouring permanent screens - coloured material or lights from above/below.



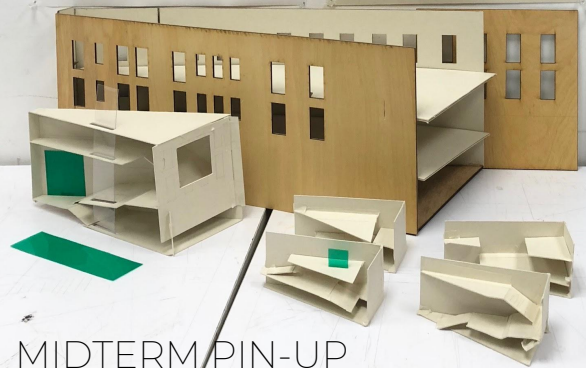
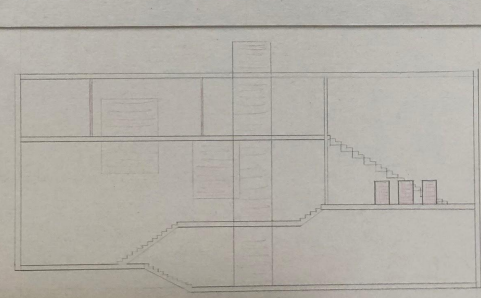
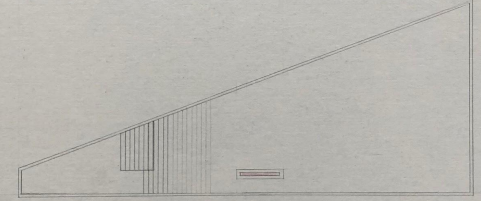
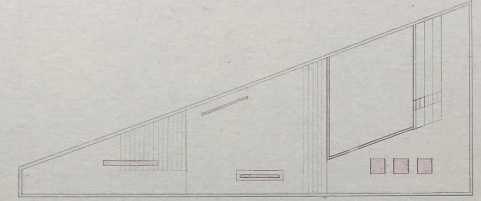
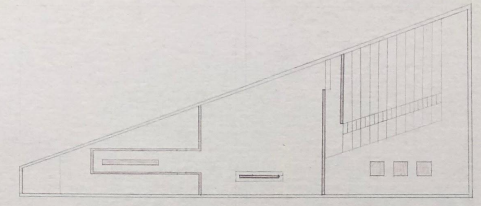
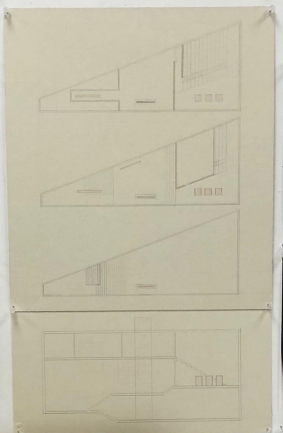
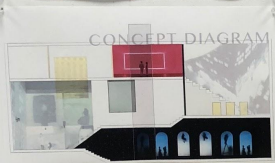
private studio
 public living
 public exhibit
 admin
 lockers



PROCESS SKETCHES



PROJECTION



MIDTERM PIN-UP