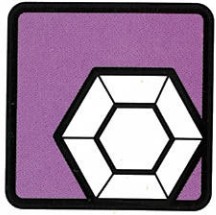




Line Color Form

The Language of Art and Design

Jesse Day



CHAPTER 4

Material

Surface and Structure

A crucial step in every creative process is the choice of material. Material not only affects the aesthetic and physical construction of an object, it also has the power to change the symbolic meaning of a piece. Every creative field, from oil painting to interior decorating, has its own specialized set of materials, and learning how to work with these materials is a fundamental aspect of art and design education. This chapter offers the essential vocabulary needed to call materials by their proper names, as well as adjectives to describe their physical nature, their surface texture, and their state of being, from shiny and pristine to rusty and tarnished.

Hardness and Flexibility



hard

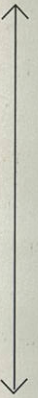
rigid

stiff

firm

supple

soft



pli

pli

be

fle

str

ela



Hardness and Flexibility



hard
rigid
stiff
firm
supple
soft



pliable
pliant
bendable
flexible
stretchable
elastic



Material

Texture

is the choice of material. Material not only affects the appearance of an object, it also has the power to change the creative field, from oil painting to interior decorating, and learning how to work with these materials is an essential part of design education. This chapter offers the essential information about their proper names, as well as adjectives to describe their texture, and their state of being, from shiny and

Surface Texture



crinkly



dimpled



fluffy



bumpy



peeling



porous



rough



slimy



spiky



bristly



glossy



smooth

ture



bled



fluffy



ng



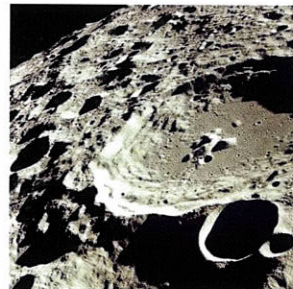
porous



spiky



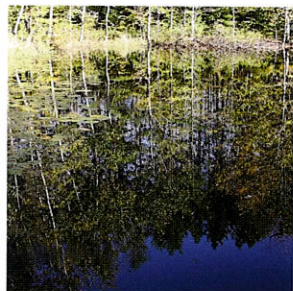
bristly



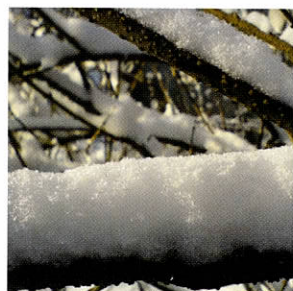
cratered



foamy



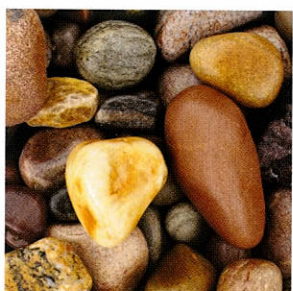
glossy



powdery



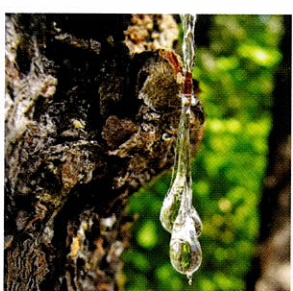
shiny



smooth

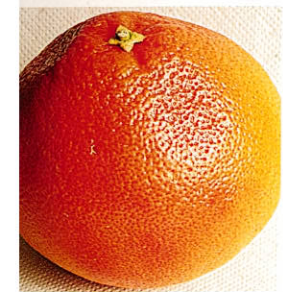


spongy



sticky

xture



mpled



fluffy



eling



porous



ny



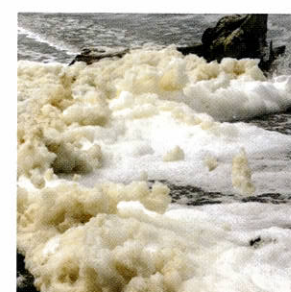
spiky



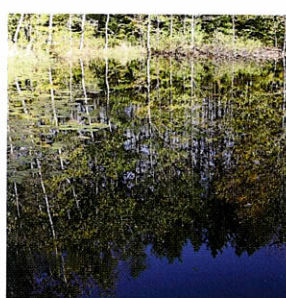
bristly



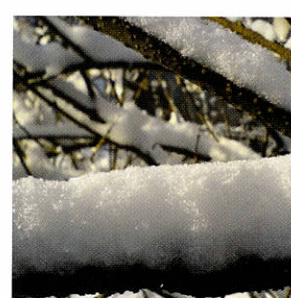
cratered



foamy



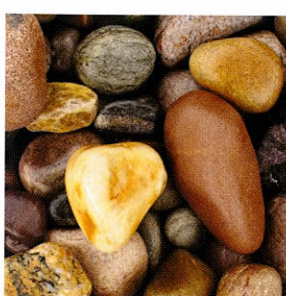
glossy



powdery



shiny



smooth



spongy



sticky

Glass



broken mirror



etched glass



glass blocks



hand-blown glass



neon glass tubes



plate glass



reinforced glass



shattered glass



stained glass

Wood



bark



etched presswood



rotten wood

Wood



etched glass



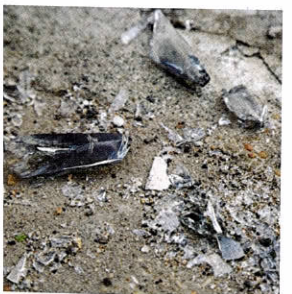
glass blocks



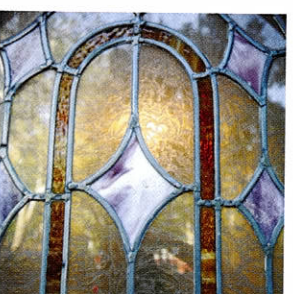
neon glass tubes



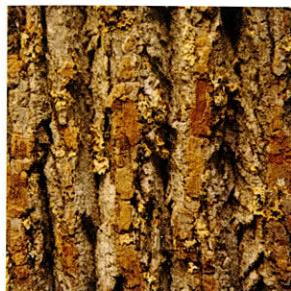
plate glass



shattered glass



stained glass



bark



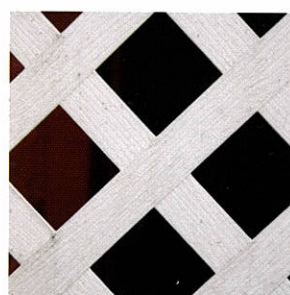
chipped paint



corrugated cardboard



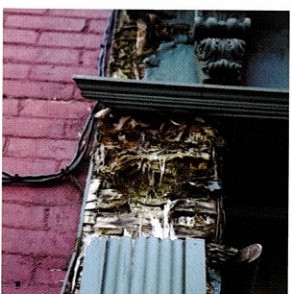
etched presswood



lattice fence



plywood



rotten wood



wicker basket



wood chips

Metal



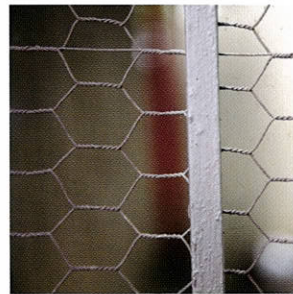
aluminum



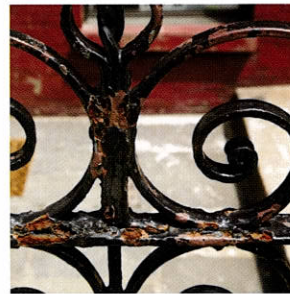
barbed wire fence



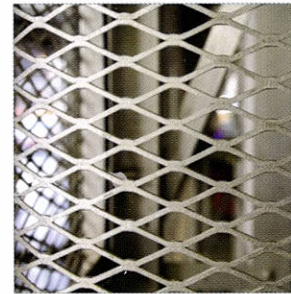
brass



chicken wire



corroded wrought iron



diamond grate



mangled chain-link fence



oxidized steel chain

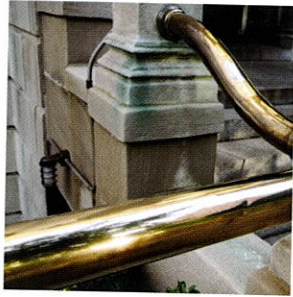


steel screws

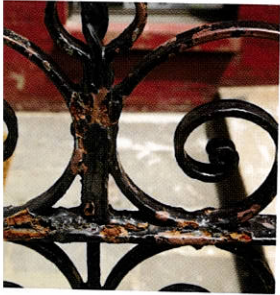
Stone



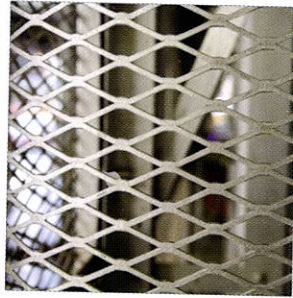
barbed wire fence



brass



corroded wrought iron



diamond grate



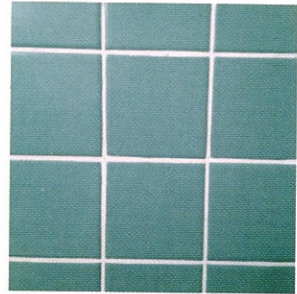
polished steel chain



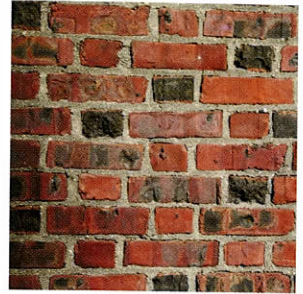
steel screws



asphalt



bathroom tile with grout



bricks and mortar



cinder block



cobblestones



cracked pavement



marble column



mosaic



pebbles

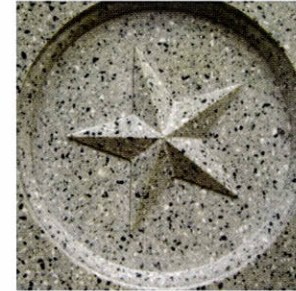
Plastic



Bubble Wrap



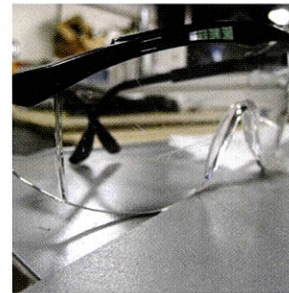
foam board



Formica



nylon twine



Plexiglas



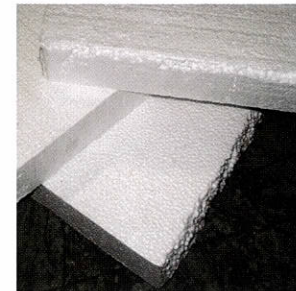
polyethylene



rubber handle



shrink wrap



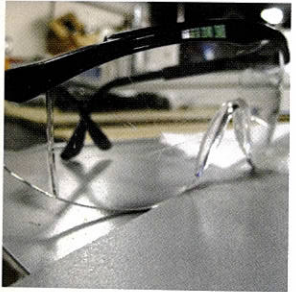
Styrofoam



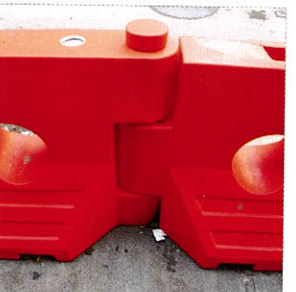
foam board



Formica



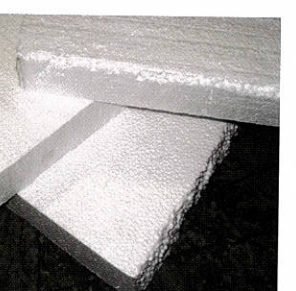
Plexiglas



polyethylene

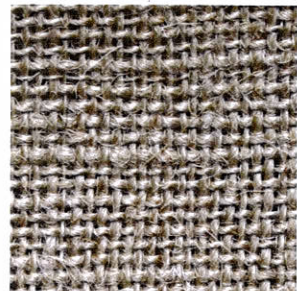


shrink wrap



Styrofoam

Organic



jute burlap



cotton yarn



raw cotton



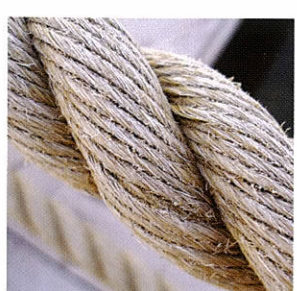
raw sheep wool



silk chiffon



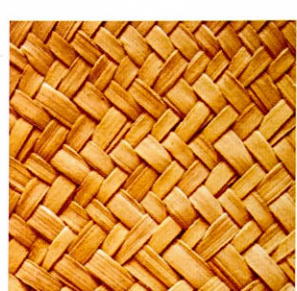
twine



twisted hemp rope



wool yarn



woven straw