



RACHEL FERRIER

REP + ANALYSIS  
PORTFOLIO

FALL 2016

# TABLE OF CONTENTS:

## HAND DRAWINGS:

ORIGINAL CUBE PERSPECTIVE

ORIGINAL CUBE ORTHOGRAPHICS

ORIGINAL CUBE PERSPECTIVE SHADOW

ORIGINAL CUBE EXPLODED AXONOMETRIC

ORIGINAL CUBE PLAN, SECTION, PERSPECTIVE

MOLD OF CUBE ORTHOGRAPHICS

MOLD OF CUBE PERSPECTIVES

MOLD OF CUBE AXONOMETRIC W/ STAIRS

## CAD DRAWINGS:

MOLD OF CUBE AXONOMETRIC W/ STAIRS

MOLD OF CUBE SECTION PERSPECTIVES

MOLD OF CUBE TOP + FRONT ELEVATION

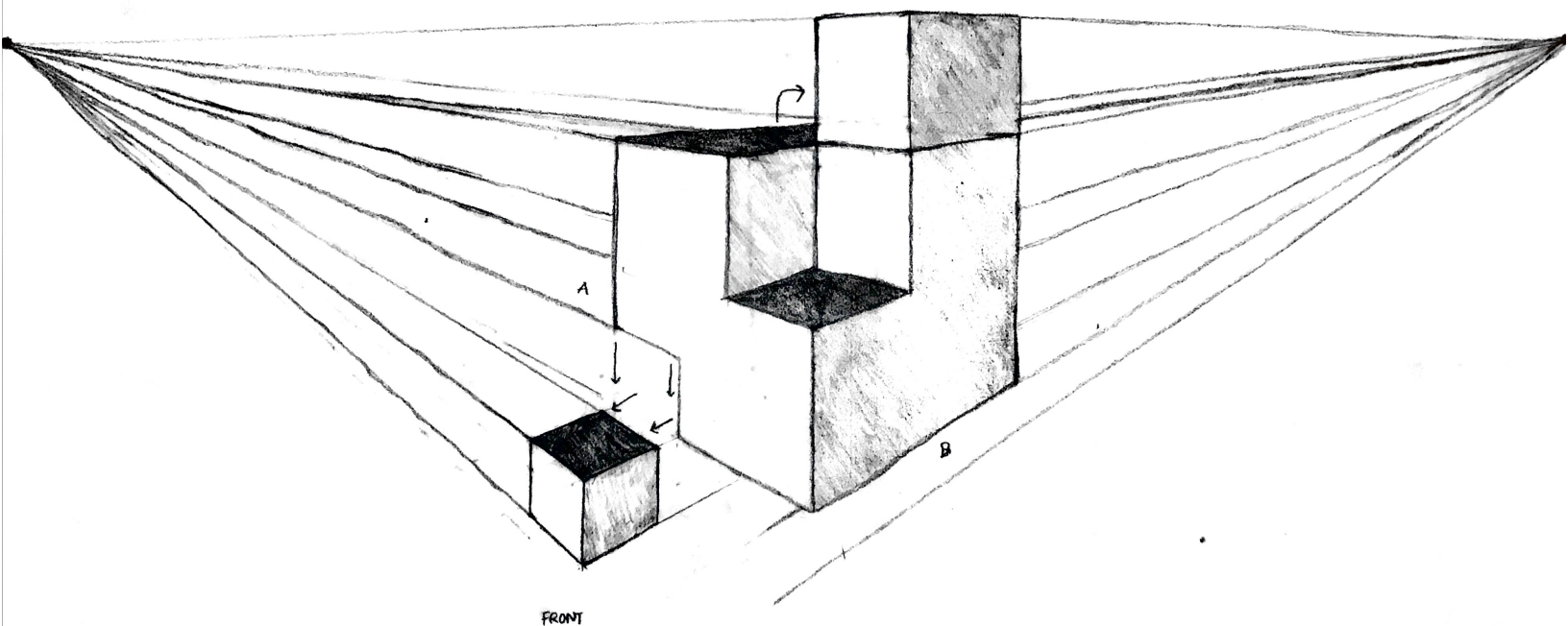
MOLD OF CUBE PLAN AND SECTION

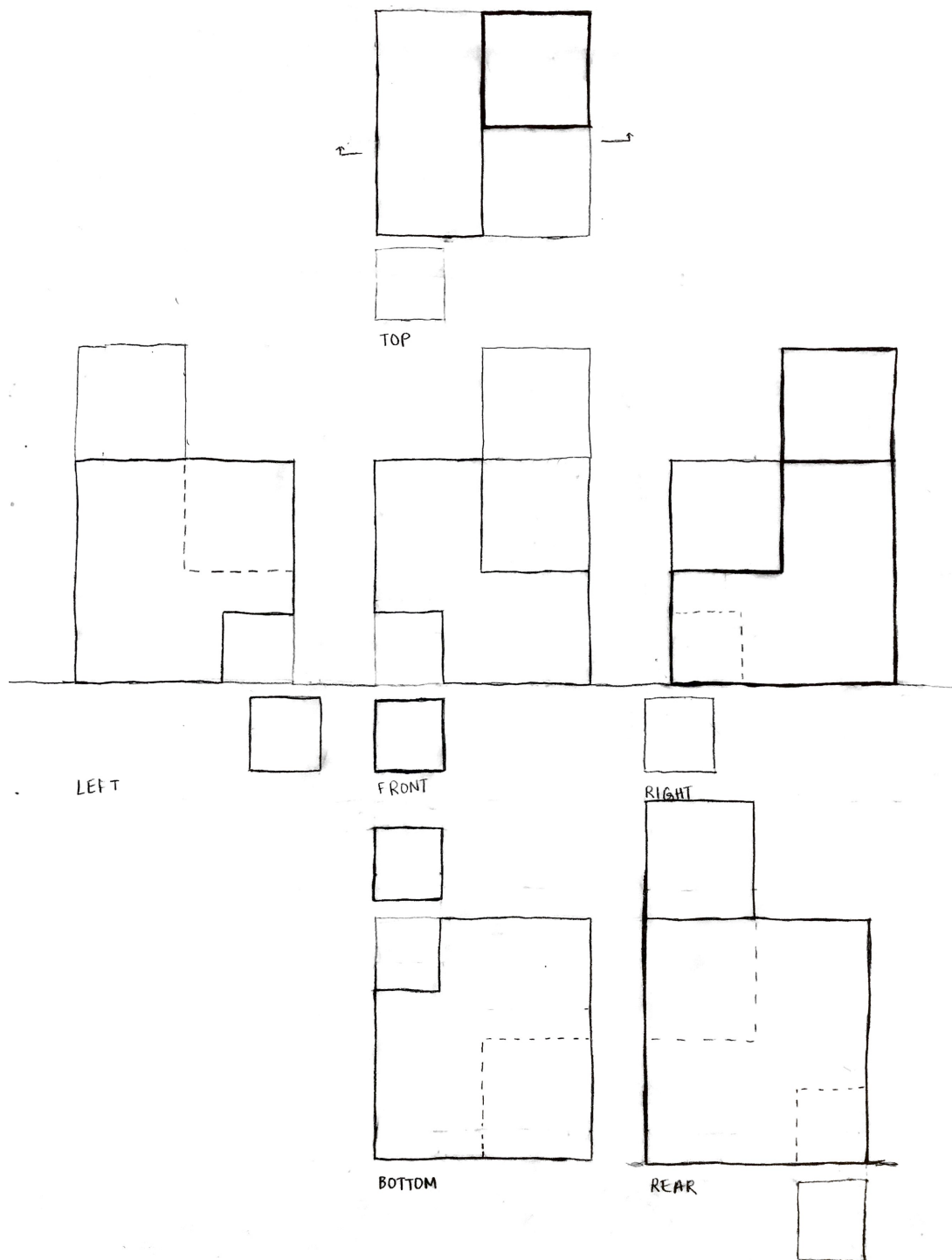
MOLD OF CUBE AXONOMETRIC IN COLOR

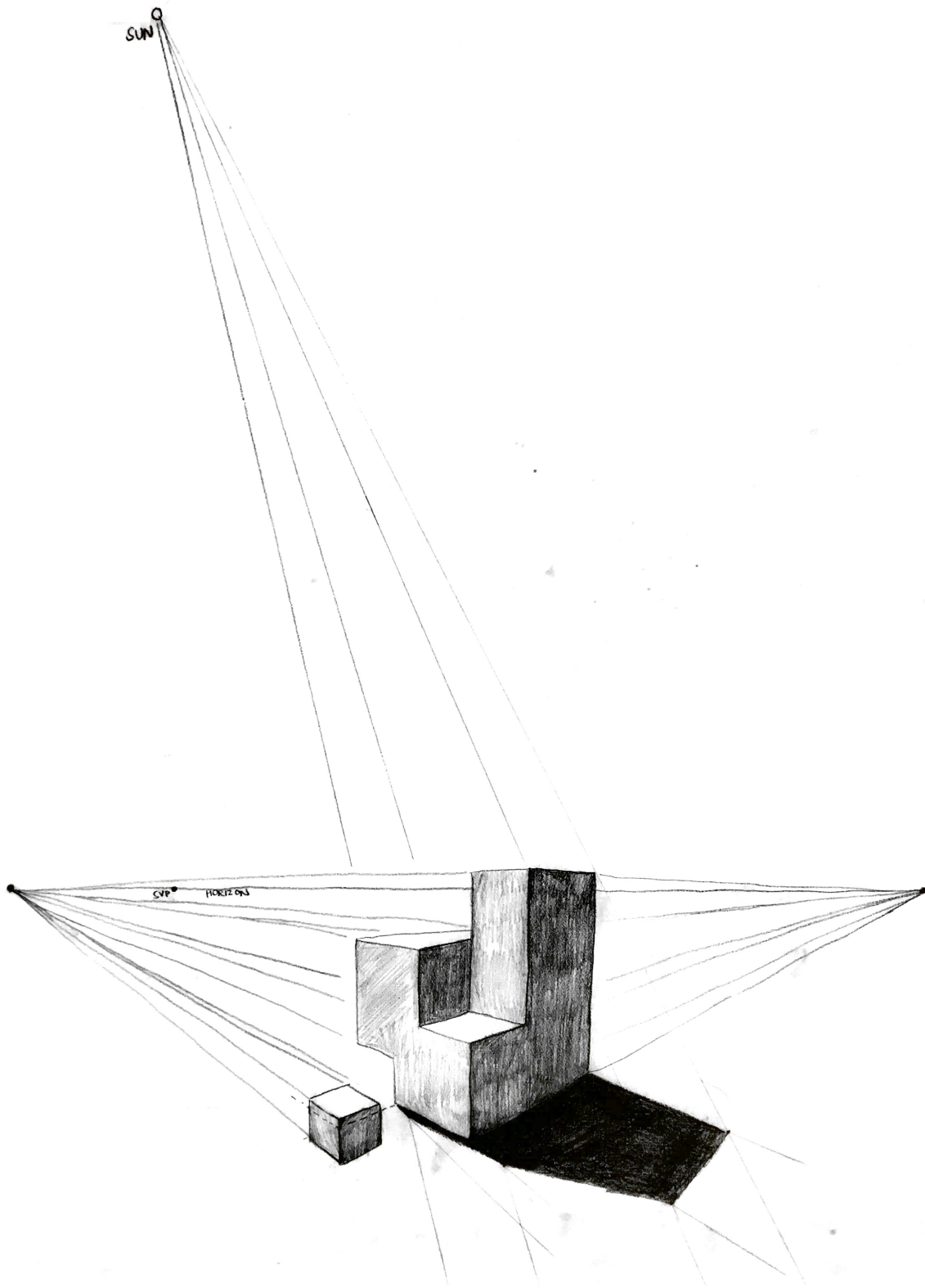
MOLD OF CUBE AXONOMETRIC IN COLOR

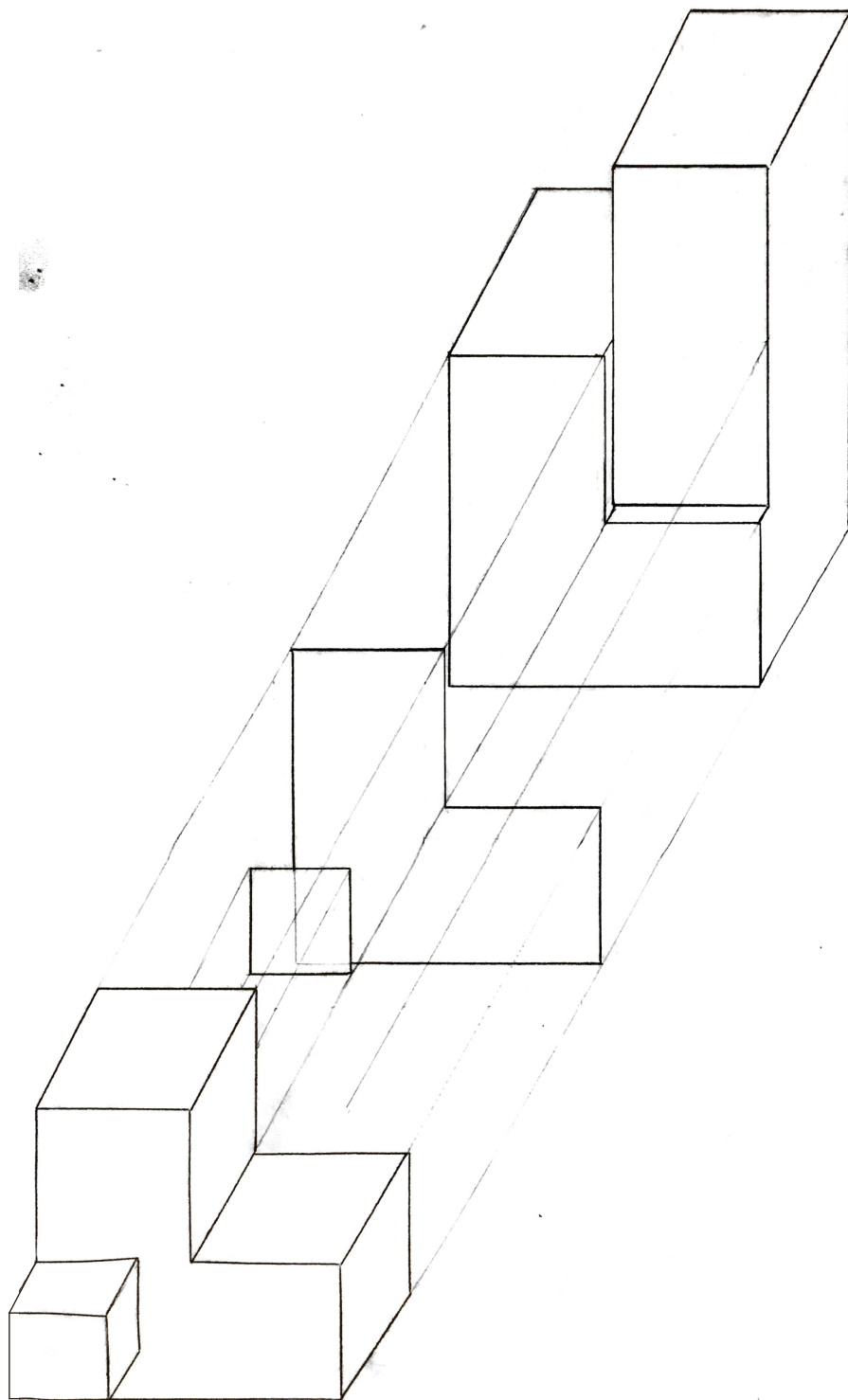
# ORIGINAL CUBE:

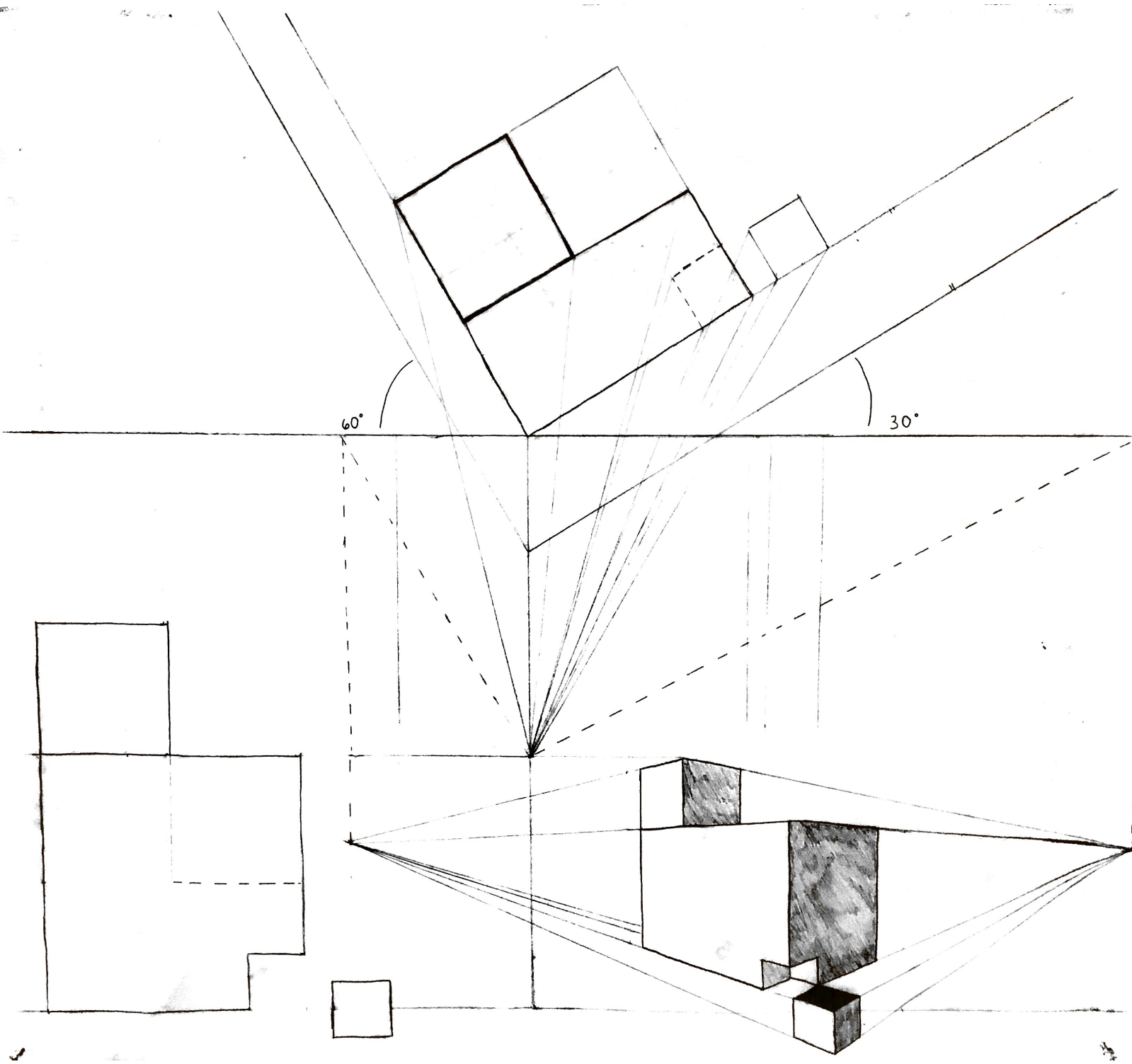
IN THE FIRST HALF OF THE SEMESTER, WE  
DREW ONE 3 IN. CUBE, SUBTRACTING  
HALF OF IT AND DISPLACED IT, THEN  
SUBTRACTING A FOURTH AND DISPLACED IT.  
WE INVESTIGATED DIFFERENT REPRESENTATIONAL  
DRAWINGS WITH OUR DESIGNED CUBE.





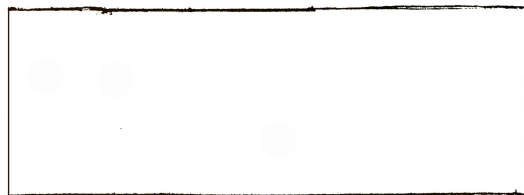
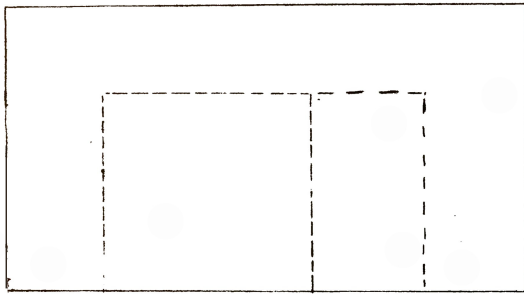




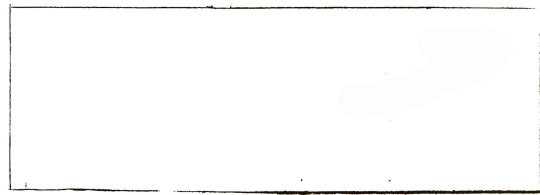
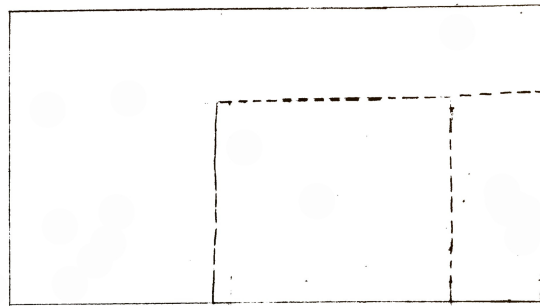


# MOLD OF CUBE:

IN THE SECOND HALF OF THE SEMESTER, WE WERE PARTNERED WITH A PEER AND ASSIGNED TO MAKE A MOLD OF THEIR DESIGNED CUBE. WE TOOK OUR SKILLS FROM THE PVIOUS EXCERSISES WITH DIFFERENT DRAWINGS TO REPRESENT THE MOLD OF OUR PARTNER'S CUBE. WE ADDED STAIRS TO TURN THIS CUBE INTO A SCALED SPACE.

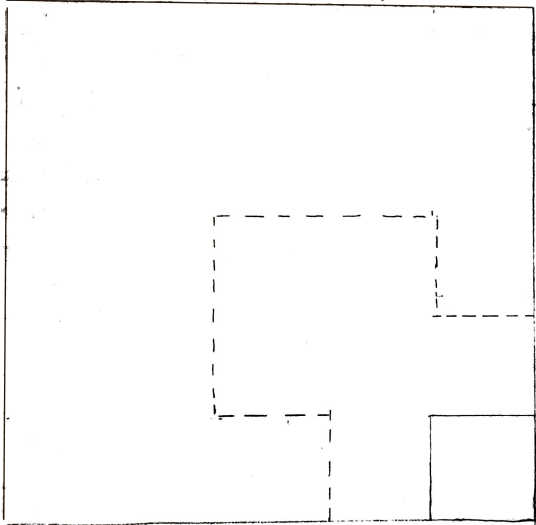


BACK

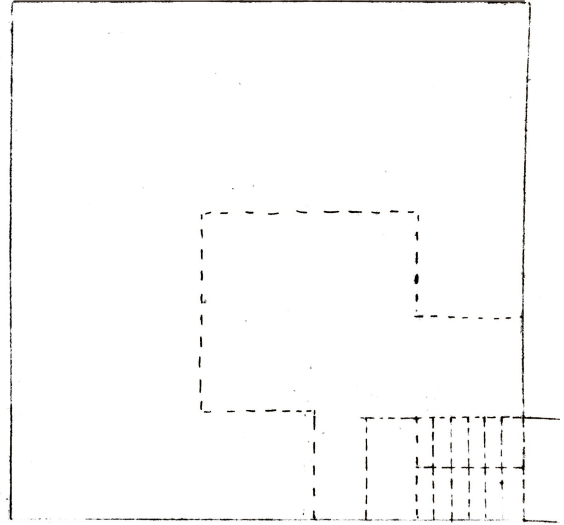


LEFT

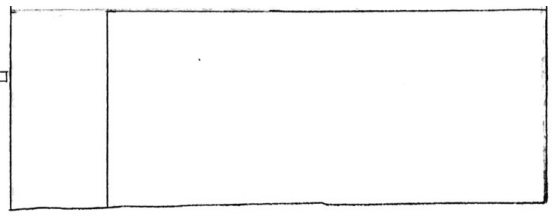
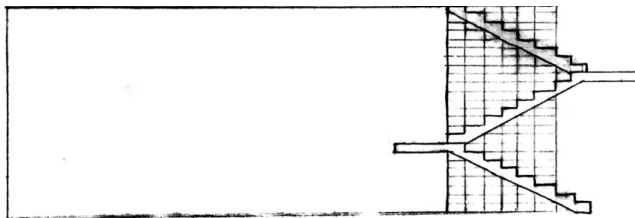
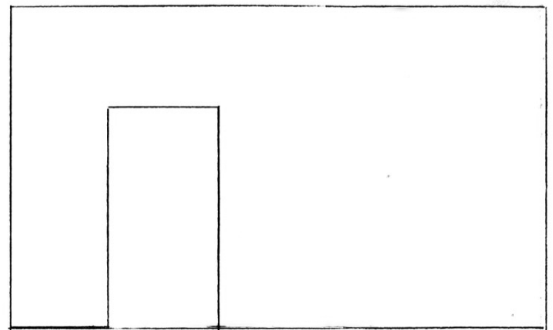
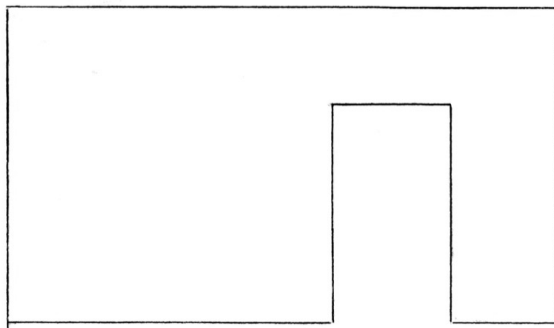


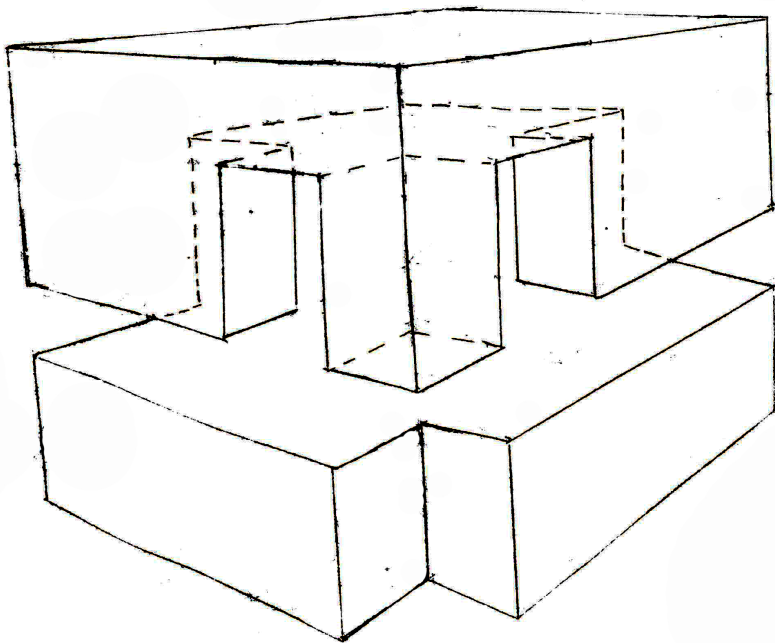
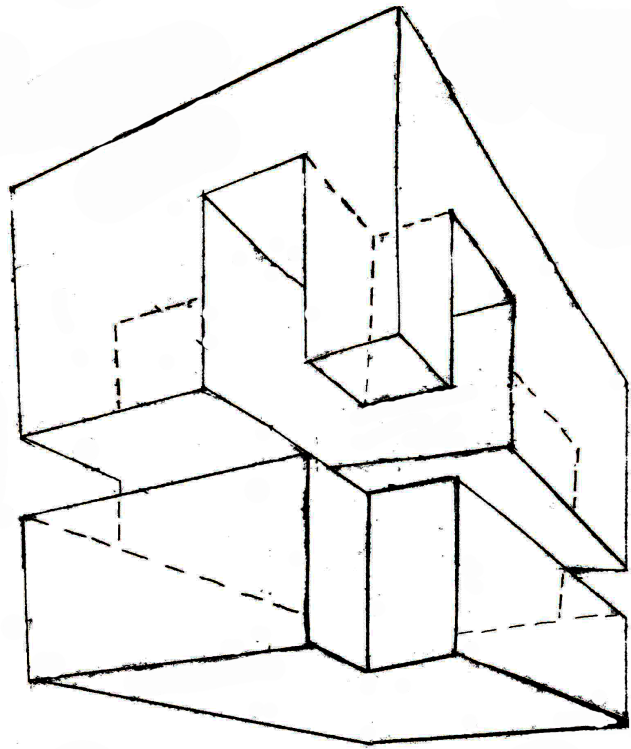


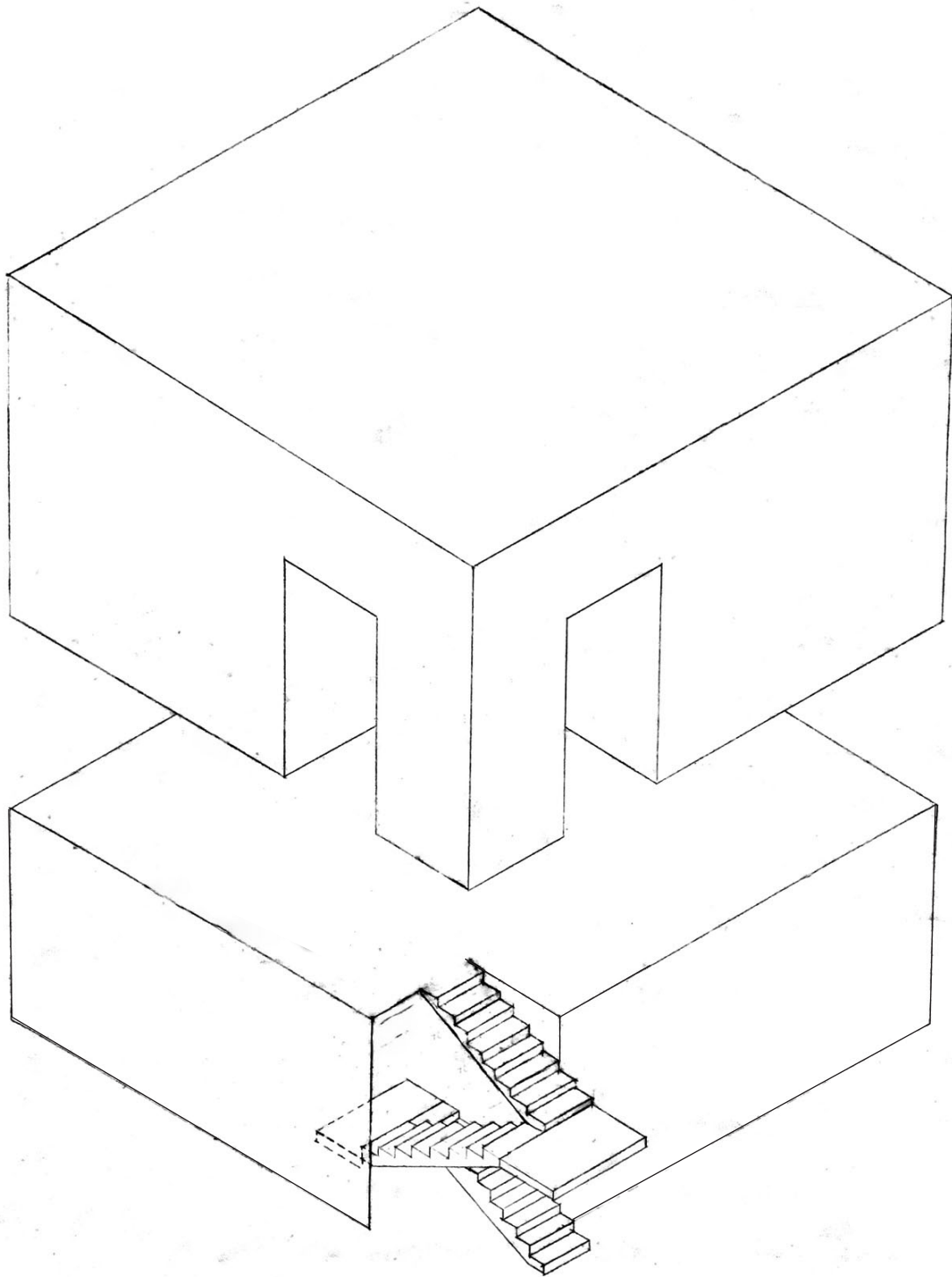
BOTTOM



TOP







# MOLD IN CAD:

AFTER ADDING OUR DESIGNED STAIRS, WE TOOK OUR TECHNICAL DRAWINGS INTO AUTO CAD TO CREATE A DIGITAL MOLD AND DRAWINGS WITH OUR ADDED STAIRS. THEN GOING TO PHOTOSHOP AND ILLUSTRATOR, WE ADDED COLOR TO OUR SPACIAL CUBE MOLDS.

