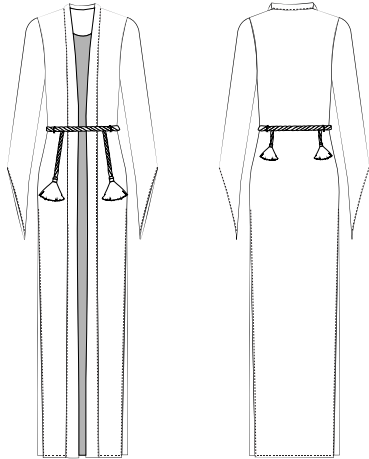
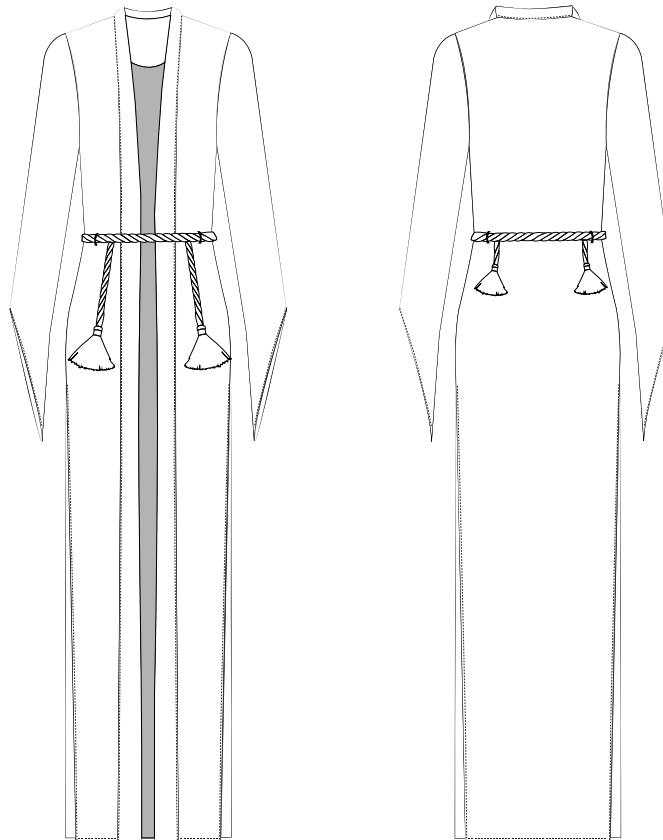
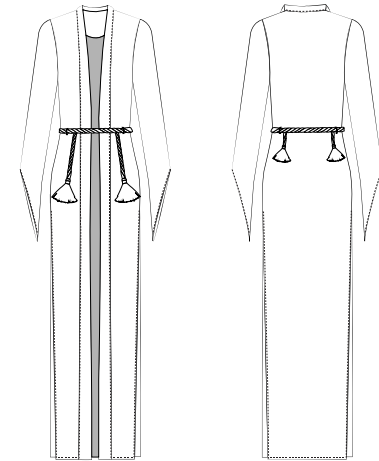
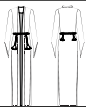


Cover Page - Product Summary		Product Number:	Spec Name: 001 : Development
<div>Department:</div> <div>Season: Spring</div> <div>Product Name: Block Printed Grommet Coat</div> <div>1st Targ. Delivery Date:</div> <div>Multi-Flow Item:</div> <div>Actual Size Range:</div> <div>Initial Product Floorset Month:</div> <div>Fashion Pyramid:</div> <div>Lifestyle:</div> <div>Fast Track:</div> <div>Designer:</div>	<div>Main Fabric Description: 100% Cotton Twill, gold and silver fabric paint, 300 grommets and punches</div> <div>Main Fabric Supplier Ref. #:</div> <div>Main Fabric Mill:</div> <div>Production Office/Agent:</div> <div>Supplier:</div> <div>Factory:</div> <div>Country of Origin:</div> <div>Vendor Ref. #:</div> <div>Buyer:</div> <div>Sourcing Manager:</div> <div>Technical Designer :</div>	<div></div>	

001 : Cover Page - FRONT/BACK SKETCH**Product Number:****Spec Name:** 001 : Development**Department:****Season:** Spring**Product Name:** Block Printed Grommet Coat**1st Targ. Delivery Date:****Multi-Flow Item:****Actual Size Range:****Initial Product Floorset Month:****Fashion Pyramid:****Lifestyle:****Fast Track:****Designer:****Main Fabric Description:**100% Cotton Twill, gold and
silver fabric paint, 300
grommets and punches**Main Fabric Supplier Ref. #:****Main Fabric Mill:****Production Office/Agent:****Supplier:****Factory:****Country of Origin:****Vendor Ref. #:****Buyer:****Sourcing Manager:****Technical Designer :**



Product Number:

Page Type:

Spec Name:

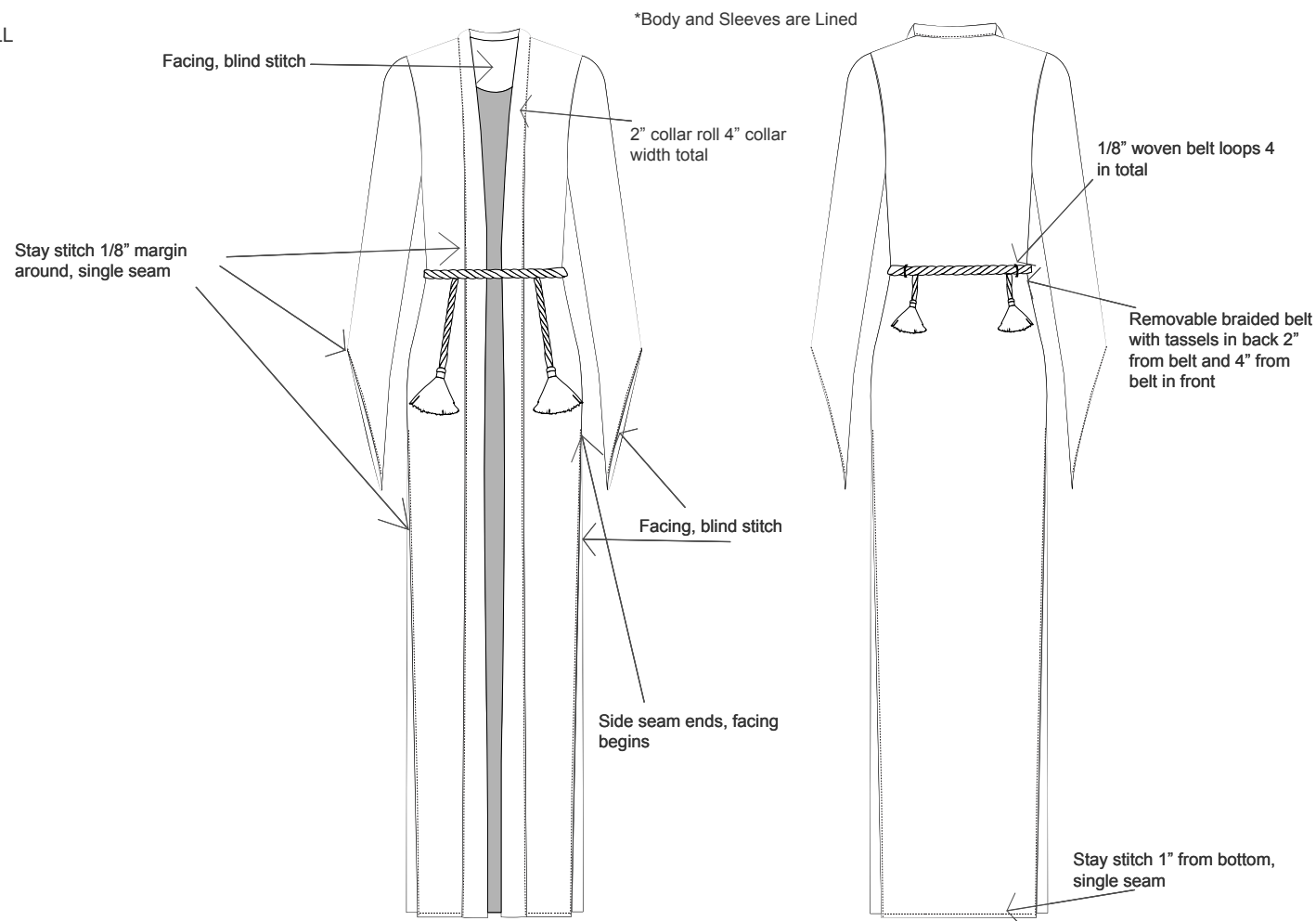
002: Detail Sketch - Details Page

001: Development

Season: Spring

Supplier:

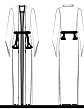
Last Updated: Sat April 04 11:55 EST 2020



	Product Number: Page Type: Spec Name:	Season: Spring Supplier: Last Updated: Sat April 04 11:55 EST 2020
	001: BOM 001: Development	

Section: Fabrication									
	Part Name:	Material:	Supplier:	Main Fabric?	Material Code	Supplier Ref. #	Placement	Quantity	BOM Comment
	FABRIC 1	100% Cotton Twill		Yes			Body, sleeves, facing	0.00 Metal = 300.00	
	LINING	100% Silk		No			Body, Sleeves	0.00	

Section: Fabrication									
	Part Name:	Material:	Supplier:	Main Fabric?	Material Code	Supplier Ref. #	Placement	Quantity	BOM Comment
	THREAD	100% polyester SPI = 12					All Construction	0.00	
	BELT & TASSELS	White Cotton					Waist	0.00	
	Grommets, Snaps and Studs	Silver and Gold Metal		Yes			All Construction	75.00 Gold1" Grom. 75.00 Silver1" Grom. 50.00 Silver Studs 50.00 Silver Snaps 50.00 Silver Grommets 1/4" 20.00 Silver 1/2" Grom. 20.00 Gold 1/2" Grom.	
	Motifs	Silver and Gold fabric printing paint		Yes			All Construction	12"x4" size print 12"x4" horizontal spacing 1" vertical spacing	



Product Number:

Page Type:

Spec Name:

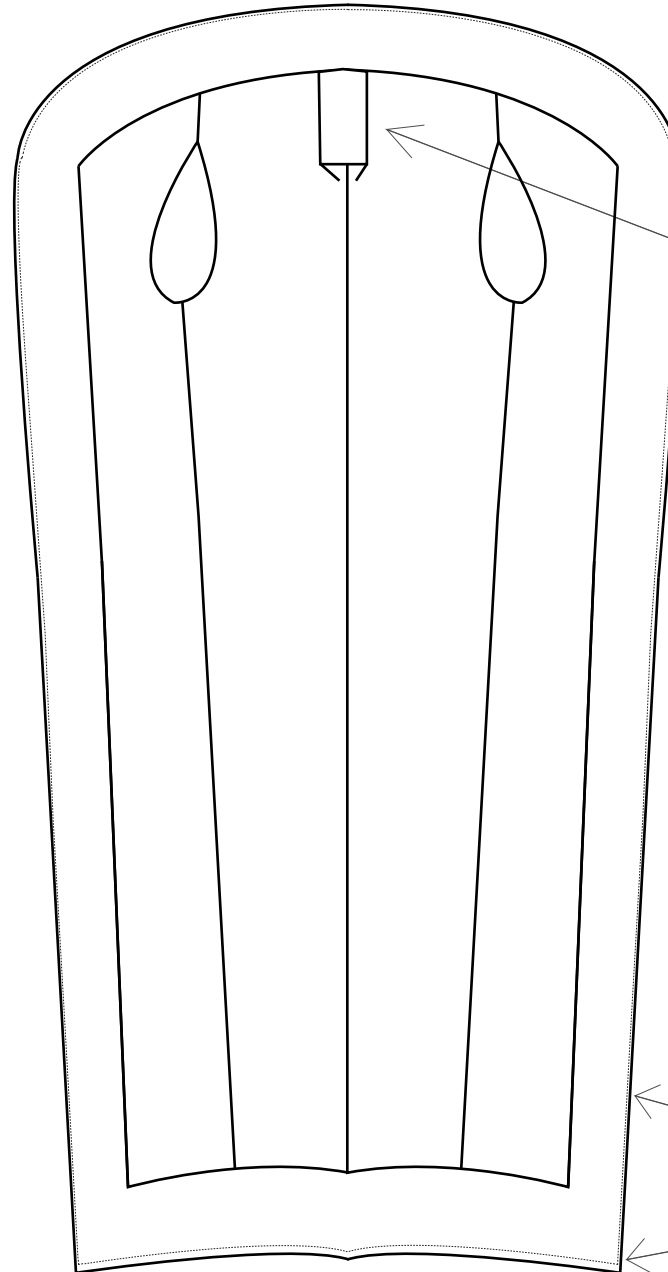
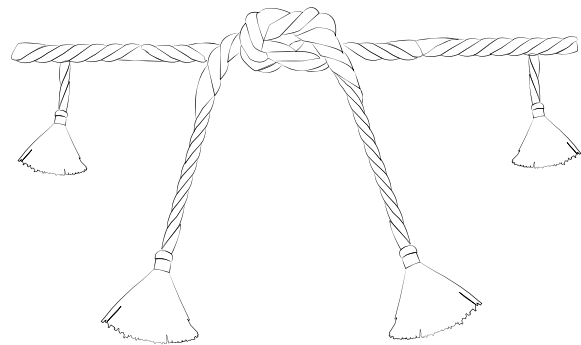
003: Detail Sketch - INTERIOR VIEW

001: Development

Season: Spring

Supplier:

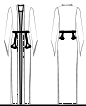
Last Updated: Sat April 04 11:55 EST 2020



4" Box Pleat of Lining on
CB

Stay Stitch, 1/8" margin 1NTS

Stay Stitch, 1/2" margin 1NTS



Product Number:

Page Type:

Spec Name:

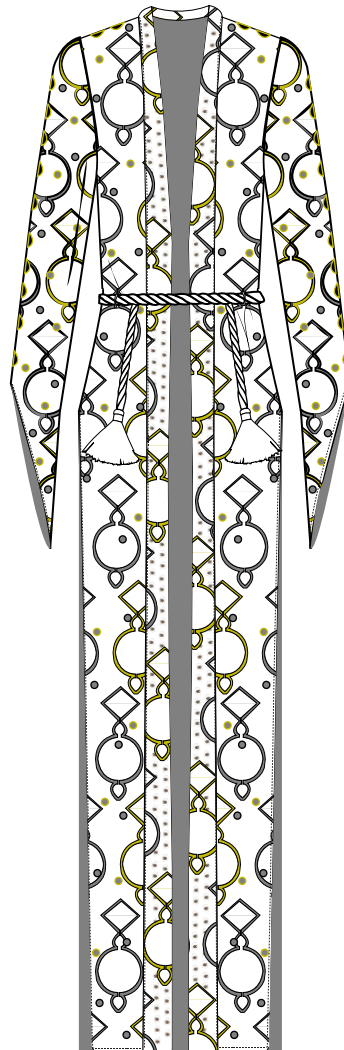
004: Detail Sketch - MINI BODIES

001: Development

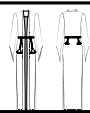
Season: Spring

Supplier:

Last Updated: Sat April 04 11:55 EST 2020



Block Printed Grommet Coat



Product Number:

Page Type:

Spec Name:

005: Photo - INSPIRATION SAMPLE

001: Development

Season: Spring

Supplier:

Last Updated: Sat April 04 11:55 EST 2020

Sleeve openings are cut to 2"
above wrist on left side of
sleeve and 5" below wrist on
right side

1" Grommet metal
matches with color of print
underneath



no breaking point of collar,
continues to the hem of
the coat

Print gold, silver, gold,
silver pattern

	Product Number:		Season:	Spring
	Page Type:	Development Sample Measurements	Supplier:	
	Spec Name:	001: Development	Last Updated:	Sat April 04 11:55 EST 2020

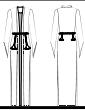
Measurement Set Comments:

Name	Tol +/-	Size 4 Inches
Waist Circumference Relaxed		33
Shoulder Seams Forward on HPS		-1
Shoulder Slope		
Across Shoulder - Set in Sleeve		18
Across Front 7" from HPS		20
Across Back 7" from HPS		22
Bust 1" Below Armhole Circumference		40
Waist Placement - Front From HPS		17
Waist Straight		30
Sweep Along Edge		
Body Length at Front from HPS		64
Body Length at Back from HPS		63
Armhole/Sleeve		22
Armhole Depth		2.5
Sleeve Length from Shoulder Seam - Long		22
Sleeve Width at Upper Arm 1" Below Armhole		19.5
Sleeve Opening - Long		20
Neck/Collar		20
Neck Width Seam to Seam		
Neck Drop from Front HPS to Lapel Seam Above Bust		9
Neck Drop at Back HPS to Seam		7.5
Collar Height at CB		2.5
Back Length from CBN Seam		62
Back Neck Drop		

	Product Number:		Season:	Spring
	Page Type:	Development Sample Measurements	Supplier:	
	Spec Name:	001: Development	Last Updated:	Sat April 04 11:55 EST 2020

Measurement Set Comments:

Name	Tol +/-	Size 4 Inches
Sleeve Seam Opening		
Collar Height at CB		4.5
Belt Width		2 1/4
Forearm circ 7" Above Sleeve Opening		12.2
Sleeve Facing Height		4
Slit Facing Height		4
Hem Facing Height		4
Sleeve Seam Opening		4
Slit Length		



Product Number:

Page Type:

Spec Name:

005: Photo - Garment Details and Design

001: Development

Season:

Spring

Supplier:

Last Updated: Sat April 04 11:55 EST 2020



snaps, studs, and 1/4"
grommets only on collar
facing

1/2" grommets only doing
down center of sleeves

Block Print Design Stencil

