

JASMIN HACK  
CONSTRUCTIVE ENVIORNMENTS



INTERVENTION

---

BROOKLYN ARMY TERMINAL  
140 58th St. Brooklyn, NY 11220

# INTRODUCTION

---



The Brooklyn Army Terminal is a timeless piece of architecture that sits on the shores of the Upper Bay. With hundreds of square feet of complex infrastructure, this building holds the potential to be a conjoint environment between the public and the workers.

A complex glass ceiling overlooking a long stretch of train tracks that run within the inside of the atrium is advanced for its time of creation. The history, potential, and purpose are slowly disintegrating, due to the city has only focused on the vacant rooms within the building.



The atrium which is currently vacant, screams for a purposeful intervention. Currently, the public is excluded from this once beautiful feat of architectural magnitude which has become derelict in its neglect.

---

---

---

The focus on investing only in tenant spaces generates a stagnant profit rather than an investment that shows benefit to the neighborhood through yielding wealth.

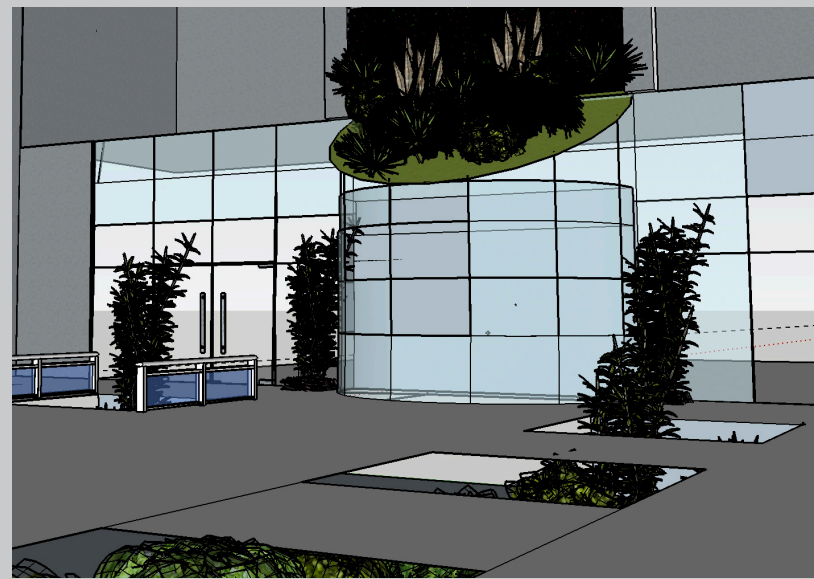
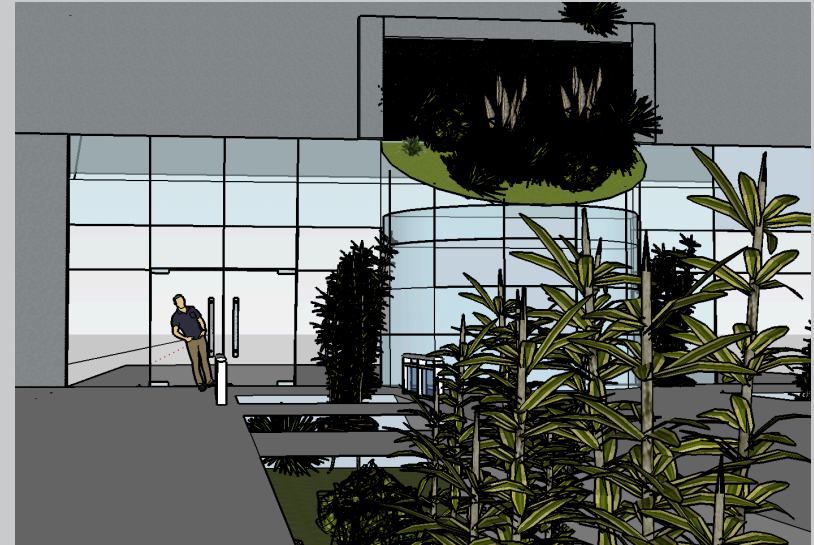
**To challenge and alter these issues, a public space such as a botanical garden within the atrium in the Brooklyn Army Terminal could be implemented to generate public interest, profit for the city, and an eco-friendly state that still maintains the history of the site.**

This would, in turn, benefit the terminal and the surrounding neighborhoods. This intervention would have a similar impact and purpose, causing a slope effect of positivity within the Brooklyn community and the people and businesses that make it up.

---

---

---





# ECO-FRIENDLY

---

---

Contemporary society is entering a stage where the realization of the importance of ecological sustainability. With the Brooklyn Army Terminal in need of progression for future sustainability, the inclusion of an eco-friendly aspect would benefit the site.

---

---

---

The initiative to go green could cultivate future development in new tenants with eco-friendly products or even the inclusion of greenhouses and solar panels as a for of sustainable energy.

---

---

---

Despite the style of architecture that the Brooklyn Army Terminal is built in, using the aspects of the "...unbuilt elements of the urban environment..." allows for the workings of a more ecological and socially stimulating atmosphere.<sup>1</sup>



## SKETCHES

concepts and ideas for various implementations as an intervention in the Brooklyn Army Terminal.

---

---

---

A public botanical garden encourages and challenges the refinement of classical urban settings and creates a more habitable and ecological metropolitan region for those who feel a need to escape.<sup>2</sup>

Spaces that already do this within New York City that were used as inspiration were the High Line and the Brooklyn Botanical Garden. These nontraditional public spaces differ from a park but hold similar qualities that draw visitors whether they be tourists or locals. A similar creation would certainly attract.

Continuing on this, the implementation of greenery within the atrium of the building would juxtapose the cold and an uninviting military like aspect of the thick concrete walls and stimulate an environment for public socialization. Various plants inhabiting the city also begins to touch on eco-friendly sustainability.

---

---

---

The introduction of more natural environment could generate income through the possibility of admission or the selling of eco-friendly products which have shown to be a trend within recent years. The atrium itself has shown favor to greenery in the decay and overtaking of moss and other small plants.

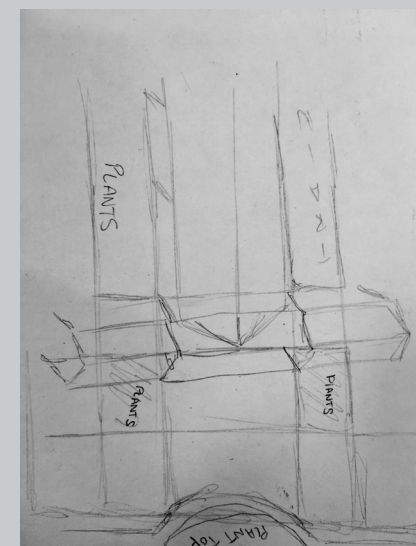
---

---

---

Platt states that “... respecting and restoring natural systems within urban places is often more cost-effective than using technological methods.”<sup>3</sup>

This holds true in the aspect that allowing nature to take over parts of the Brooklyn Army Terminal would be more beneficial not only in cost but also in the restoration of the site.



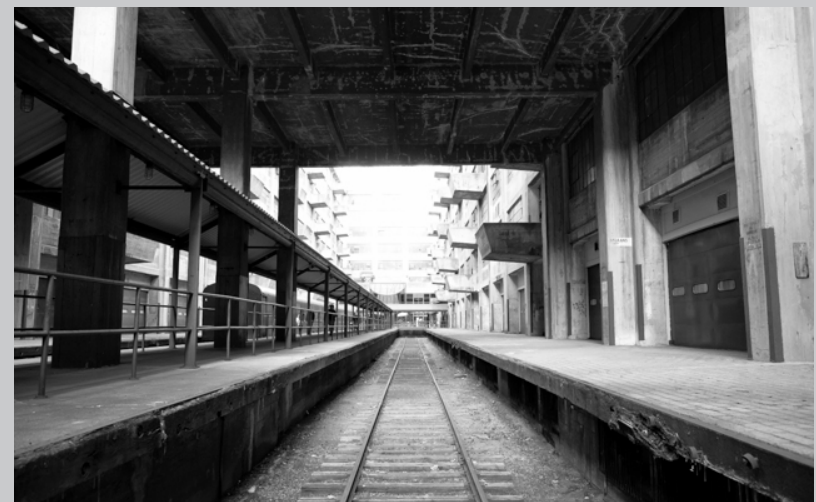
# HISTORY

The Brooklyn Army Terminal could indefinitely have a similar effect on the surrounding areas through the proper presentation of the military background of the space in a juxtaposing way similar to how the Highline presented their history. The terminal could have historical and original aspect such as some of the equipment used during World War II implemented within the greenery and specific memorial mementos distributed throughout.

This would preserve the history as well as present it to the public in a nontraditional way. The history is the very reason to why the terminal was created and it is crucial to present appropriately to those who encounter it the value that the building holds. This terminal is in a state of an essential unknowing revolution. The division between the public and workers has left the site hindered in its possibility to evolve into something greater.

New York has a hidden history of military influence which has translated into future potential. The Brooklyn Army Terminal, which is nestled against the Upper Bay, has a rich historical background dating back to 1918 when it was commissioned to be the largest military supply base.<sup>4</sup>

Now, this site that has been bought by the City of New York and repurposed holds a plethora of concrete has an ability to be revised. The immense amounts of change proposed raises a question as to how and if the Brooklyn Army Terminal will preserve its history.





---

---

---

With New York City being known as a place known for its modernized looks and this style even trickling into Brooklyn, the terminal's style stands out in contrast to the surrounding architecture.

In an artistic intervention aspect, this can be seen as positive. The history that this site holds is a prime design characteristic to the future potential of the site. A similar location which has done this in an effort to specifically redesign and preserve its history is the High Line within the Meat Packing District of Manhattan.

The Highline was an architectural intervention in its time that sought the alteration of its history rather than its destruction. Its design concept was meant to preserve rail viaduct through the recreation of its history. The transformation of this site would preserve the original state of the site while recreating the purpose.<sup>5</sup>

---

---

---

The Highline had several objectives in its creation. Beyond a classical beautification, the intentions of this creation went on into the enhancing of economic development within the area. This is done by creating a public site with locations around it that can generate income through sales.<sup>6</sup>



# ECONOMICAL BENEFITS

---

---

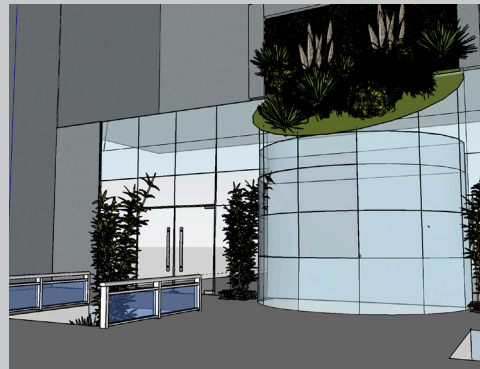
If the terminal was altered into a more modernized building, this would have a negative impact on the neighborhood in heightening the cost of living beyond what those in who live there could afford.

---

---

---

Instead, an intervention that uses the currently vacant spaces within the terminal and creates a location that has a beneficial impact on the environment will create a more positive impact for users of the site.



This site is run by the New York City Economic Development Corporation, which strives to generate profit for the city through renting to various businesses and corporations.

According to an article by Will Ellis, the Brooklyn Army Terminal over a period of 35 years has had investments made totaling \$15 million. This has repaid the city munificently in the generation of a tax revenue over \$150 million dollars and is estimated to have gone up since 2012.<sup>7</sup>

One could say this kind of profit is in of itself enough to be adequate, however, profit increase could easily occur if the surrounding neighborhoods and boroughs were integrated into the site.

This could be done through the titivating of the atrium within the main building. Currently, this magnificent feat of the Second World War is off limits to the general public and not in use except the occasional smoke breaks of maintenance workers.



In a personal survey done within the local community around the Brooklyn Army Terminal, an interest was displayed among locals. A positive response was given in reply to a proposal of an intervention that would allow them to engage with the building.

---

---

The reasoning for this intervention in the aspect of local engagement is to create a space where interactions between the employees in the terminal and the public.

This would include the publicizing of various businesses when people enter the building and their objectives and be able to present them to the community that surrounds them.

The way to entice the public to not only come to this public space but also continuously return would be through an environment that is inviting and pleasant. Public actions with the surroundings convenience stores and local food parlors would also increase.

Public interaction and a reason to be drawn to the site will stimulate economic growth between the businesses presently residing there and the public.

---

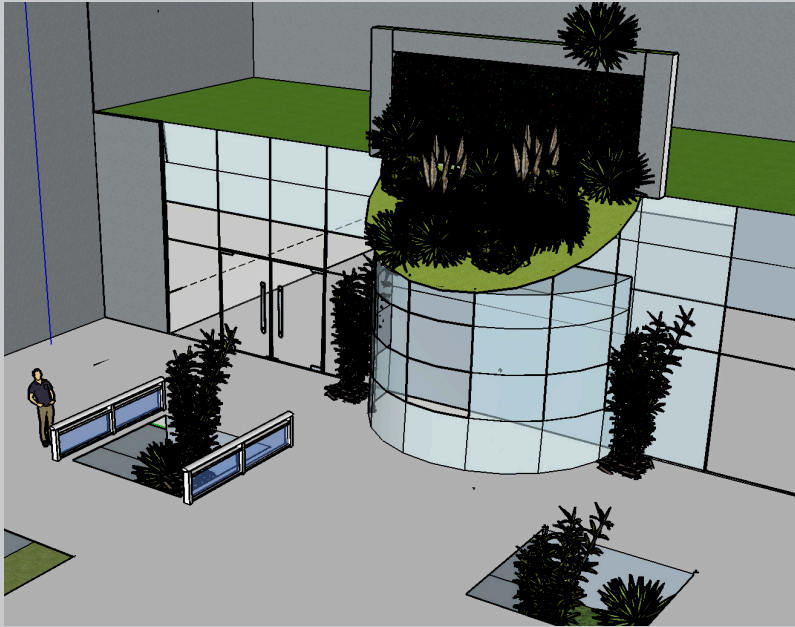
---

Removing the exclusion allows locals to begin to develop an appreciation for a historical part of their community and support for the terminal's cause. All of this will generate a profit for not only the Brooklyn Army Terminal but also for the surrounding neighborhood.

A public space would allow people to be invited not only to the site but also the adjoining community which is filled with local businesses and shops.

This could create a slope effect which could positively impact the surrounding neighborhood through gentrification. It is important that this restoration for the building be original in its architecture and reflect the neighborhood it is placed in.

# INTERVENTION



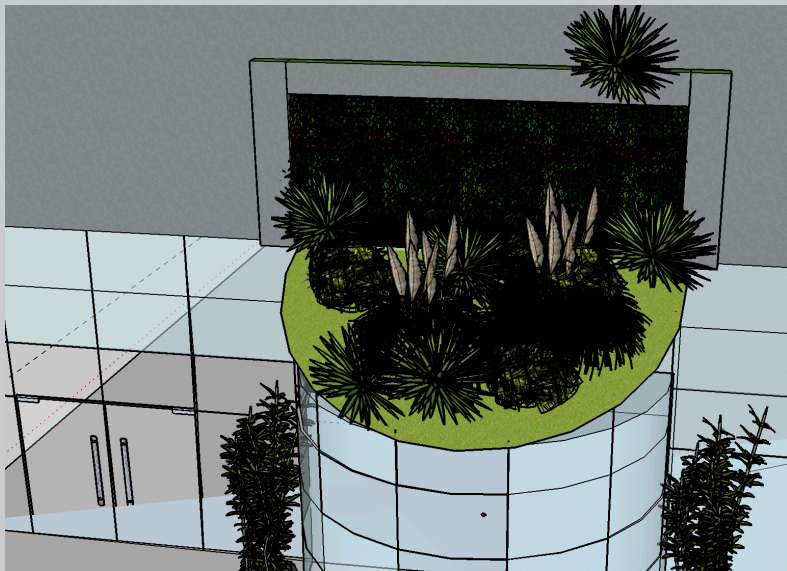
An inside view of the proposal of a botanical garden allows for a new and engaging space. This would include a variety of plants that would inhabit the space and create a more inviting setting.

The front entrance presently of the atrium consists of a convex glass wall that extended into two entrances.

Over the top of this is a vacant sloped top as well as a platform that could be turned into a bed for plants.

The two train tracks that extend throughout the center of the terminal are desolate and optimal for flower beds that could house various vegetation.

These plants that would be installed could come from various locations that American soldiers were deployed to during the Second World War when the Army terminal was in use. This would be a tribute to the service to the country and be a representational way of showing parts of the terminal's history.

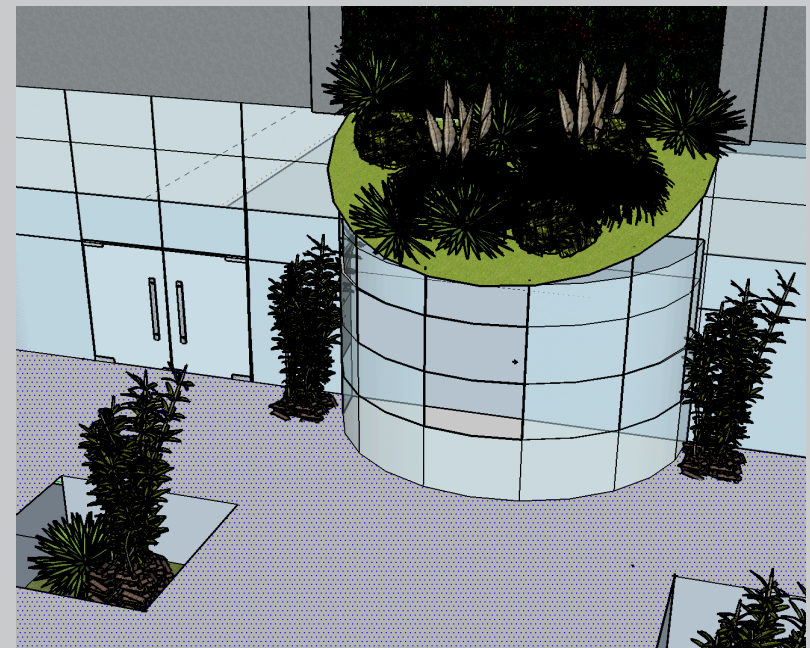
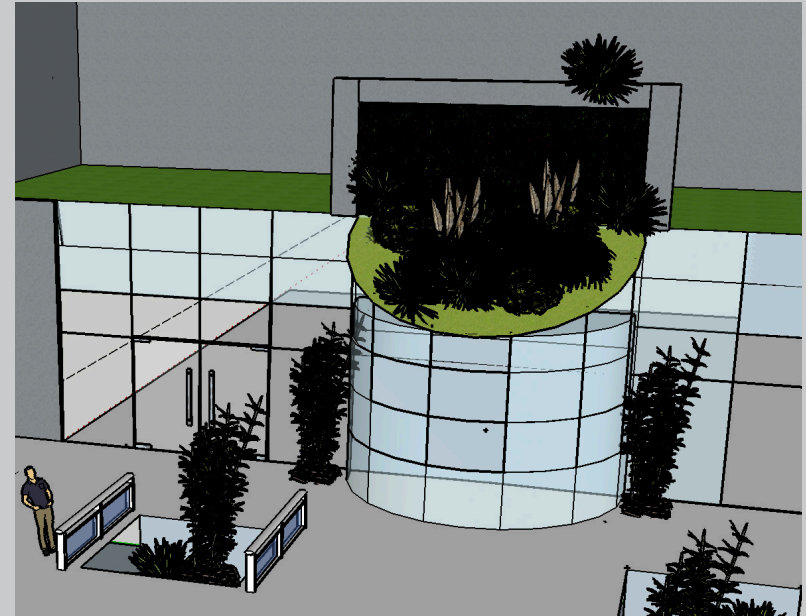


Along the walkways throughout the terminal, plaques would be placed on a newly installed railing and benches would be marked with dedication inscriptions to various soldiers or wars won by the United States. The various garages that line the sides of the terminal walls could be opened up and be nurseries to various plants such as flowers, fruits, and vegetables that could be grown in controlled environments and sold to visitors for the furthering of economic growth that would impact the surrounding neighborhoods beyond the increased spending at surrounding stores.

---

---

The various lounging furniture which would be for public use and engagement could be sponsored by a company called Urbangreen Furniture, a company who has based themselves within one of the various tenant spaces in the Brooklyn Army Terminal. Overall, this design would touch the three crucial concepts of economic growth through public engagement, the restoration, and preservation of the history and a more sustainable and eco-friendly location.





# CONCLUSION



Historical sites should be cherished within contemporary society. The Brooklyn Army Terminal is a site of historical value and a key aspect to the unique characteristics of the community. Intervening with the implementation of a botanical garden would not only preserve the history of this site, but open up potential for public engagement within the site and future profit for businesses within the site.

This can draw the community together for a progression into a better future that could be more ecologically friendly and beneficial on the entirety of the surrounding neighborhoods. Progressing forward with the Brooklyn Terminal preserves a key landmark of the Brooklyn community and a vital aspect to the neighborhood itself.

# BIBLIOGRAPHY

Chung, Jen. "Inside The Brooklyn Army Terminal, Once The World's Biggest Concrete Structure." Gothamist. October 13, 2014.

Goldstein, Phillip M. "Brooklyn Army Terminal/ Army Transport Center." Military Railroads of the New York Metropolitan Area. June 18, 2012.

Ellis, Will. "Inside the Brooklyn Army Terminal." AbandonedNYC. March 20, 2015.

Platt, Rutherford H. "Humane Urbanism at Ground Level." In Reclaiming American Cities: The Struggle for People, Place, and Nature since 1900, 223-48. Amherst; Boston: University of Massachusetts Press, 2014.

Stalter, Richard. "The Flora on the High Line, New York City, New York." The Journal of the Torrey Botanical Society 131, no. 4 (2004): 387-93  
doi:10.2307/4126942.

Young, Michelle. "From Raw to Renovated, Photos Inside the New Brooklyn Army Terminal Annex, Just Renovated." Untapped Cities. March 03, 2016.

"Share NYCEDC Announces Greiner-Maltz and Cassidy Turley Selected to Build Upon Success of Brooklyn Army Terminal." BKLYN Army Terminal. September 7, 2012.