

Project #3 Proposal Format

Names: Margaux, Jon Jon, Richard, Pedro

Proposal Format DUE on for the critique session (November 7th)

–

Integrative Studio 1: Fake
Bridge #3 Multiple Perspectives
Fake Is Here: Site-Specific Activation at Washington Park
Names: Margaux, Pedro, Jon Jon, and Richard

Title : *Traces*

Project Content (100 words)

Our site-specific performance art *Traces* takes place at the Holley Plaza in Washington Square Park. The project will involve three performers walking through each of the exits of the Holley Plaza leaving traces of water-based paint to represent the past river that ran under the park. Each performer will be carrying a paint dispensing apparatus in a different colour and will be walking through each of the Holley Plaza's three exits. The performance will be documented in video real time. Altogether, the site and medium embody the concept of physical traces and marks left by humans throughout time. The area what we now call Washington Square Park was once a river, a farm, a Military Parade Ground, and even part of an avenue. Whatever the future holds for Washington Square Park, we must remember what marks we want to leave in history.

History and Functionality of Site (100 words)

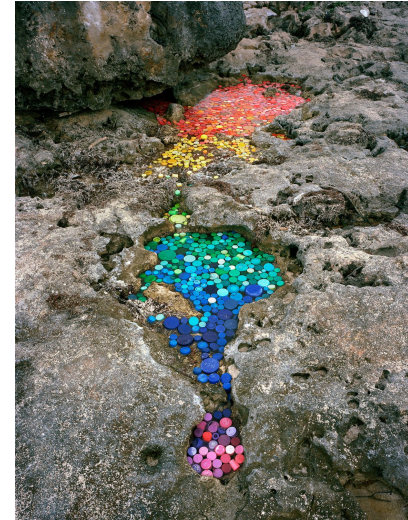
The Minetta Creek runs underneath a section of Washington Square Park. We were fascinated with this relationship between water and cement and the concept of covering up nature. The Minetta Creek, one source of water, has been covered up, and a beautiful fountain has been built in the center of Washington Square Park instead. Nature has been replaced with a man made creation. Society seems to appreciate their own creations over the Earth's. By using the history and water passage of the Minetta Creek, our installation becomes part of Washington Square Park. Although our installation could be performed and activated anywhere due to its mobility, the location of the site becomes the backbone of the art piece.

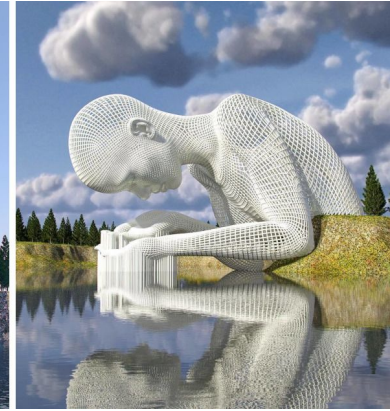
Inspiration and References (100-150 words with 15-20 digital images)

In class, we watched a performance piece "Sometimes Making Something Leads to Nothing" (1997) by Francis Alys, the artist pushing around a block of melting ice in Mexico City. That video, as well as the concept of performance art, influenced our project ideas heavily. Christo and Jeanne Claude's artistic vision also inspired our brainstorming process. The works they created were larger than life and made a statement. Although the materials and fabrics they chose to use appeared simplistic, they created a truly grand

“visual happening.” Kuweight, an artist that we discovered through research, also created very lovely artworks that had a specific and individualistic “water-like” quality. An act of simplicity can carry a greater meaning. We wanted to see if we can portray this in our own installation.

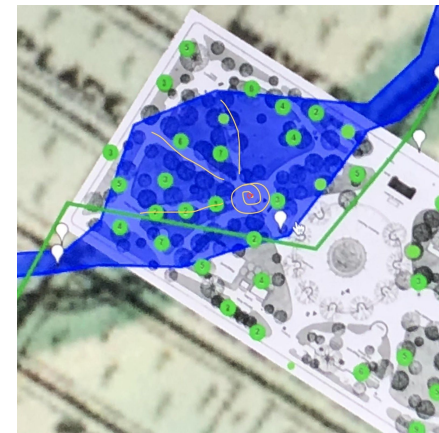
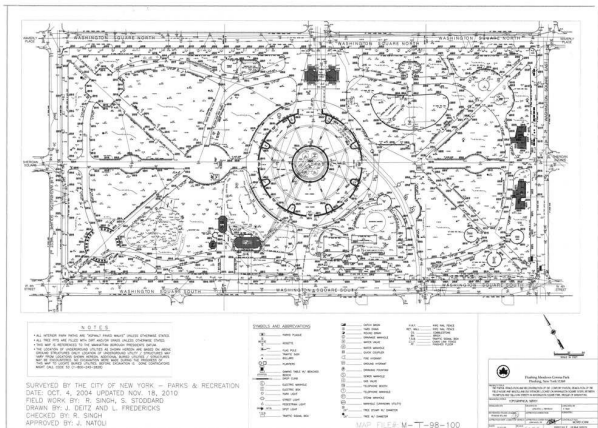






Description of Site (Include 2 Photos and Dimensions, 50 words)

Our installation will take place in the West section (the left side) of Washington Square Park. Three of us will stand and walk down three specific paths. We will meet at a smaller central hub in the left side of the park and walk in a circle, creating a blue spiral on the ground. The blue water will lay on the sidewalk as it flows underneath the concrete.



Proposal Image (Photoshop Image)



