

Drawing/Imaging

Melanie Vote

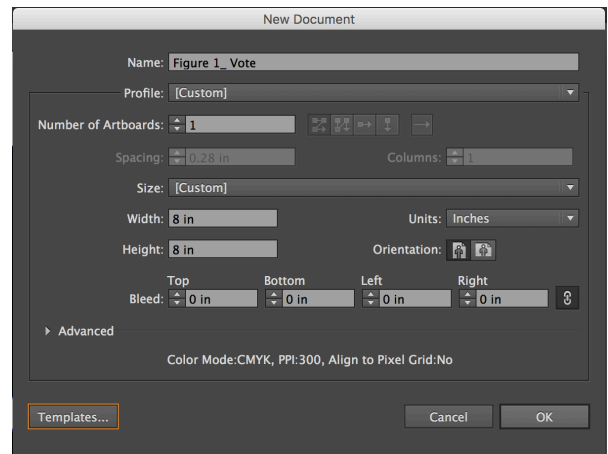
Adobe Illustrator

Setting up your files

Make a folder on your laptop called **Drawing-Imaging**.

In this folder, make a folder called **“Figure Drawings”** and put the drawings formatted in Photoshop for this project here. Make another folder called **“Silhouettes”** put all silhouettes made in Illustrator for this project here.

1. Open Illustrator, Choose File > New
(Command-N)



2. Dialog Box comes up: New Document

Name your files: **Silhouette 1_Your_Name**

Document Setup: **Number of Art boards: 1**

Size: Custom

Width: 8 in

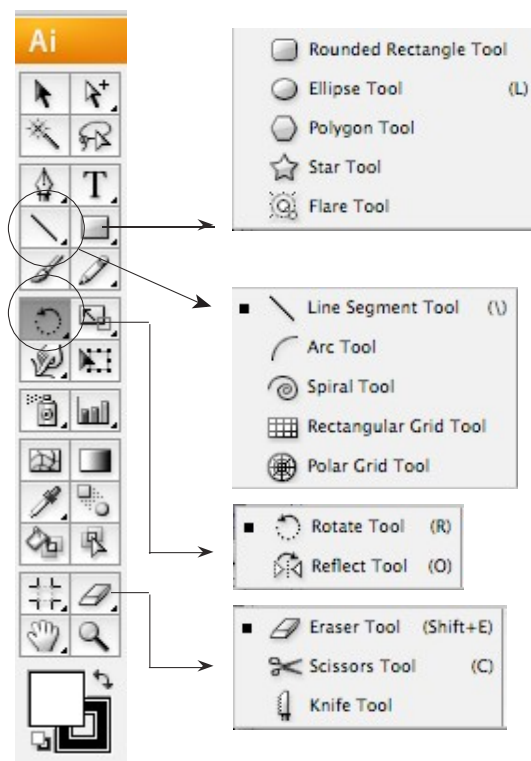
Height: 8 in

Color Mode: CMYK (final project will be printed and we will use rich black)

3. Tools:

- Selection Tool
- Type Tool
- Rotate / Reflect
- Scale
- Magnifying Glass
- etc.

Many have multiple tools:

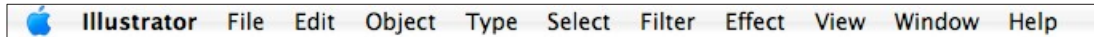


(continued)

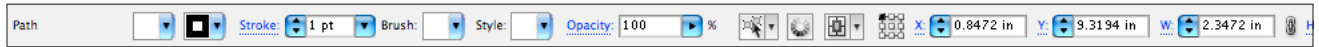
Drawing/Imaging

Melanie Vote

4. Illustrator Menu (at top):



Control Bar – Measurements / Type (changes depending on tool you're using)



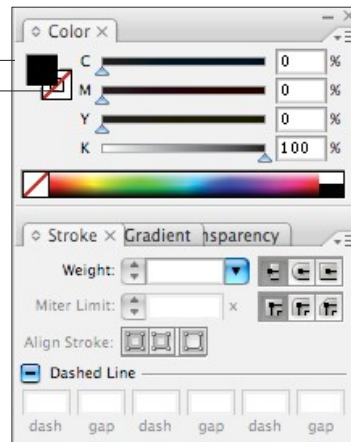
5. Rulers (Command-R) (or View > Show Rulers)

6. Palettes

a. Color:

Fill

Stroke



← Options

b. Stroke/Gradient/Transparency:

7. Selecting and moving objects

- Use Black Arrow to move object
- Click on an object to select it
- Click and drag to move it
- To select multiple objects, hold down shift key while clicking objects (or drag from outside objects around all of them)



8. Creating Silhouettes from your drawing with the Pen Tool.

- Place your first figure drawing on the art board, make it as large as you can. Use the constrain tool.
- Choose a 1pt. black stroke with no fill.
- Begin to create an outline using the pen tool.
- Use as few anchor points as needed.
- Then use the anchor point tool and Bezier curves to correct the drawing.
- Now you may select and delete original drawing.

9. Repeat five times

- Remember to each new silhouette files: **Silhouette 1_Your_Name.**
- Make a new folder called "Silhouettes.Jpeg"
- Export each of the Silhouettes as jpegs, choose to make these RGB as they will be for web only

- Create a post to L.P. called **PREP SIX PLATES**
- Include 5 figure drawings and 5 silhouettes. Also scan (in the library) your 24 thumbnail drawings. **DUE: Tuesday at Noon.**

Drawing/Imaging

Melanie Vote

Illustrator Tutorials on lynda.com

As New School students, you have the use of **lynda.com** to view tutorials on all the Adobe applications (including Illustrator). Log in with your NewSchool username and password.

Some tutorials you might find helpful:

Illustrator CC Essential Training

<http://www.lynda.com/libproxy.newschool.edu/Illustrator-tutorials/Illustrator-CC-Essential-Training/122469-2.html>

Exploring the Pen Tool

Drawing Simple Curves

Converting Corners and Curves

Tracing Artwork with the Pen Tool

<https://helpx.adobe.com/illustrator/tutorials.html>