

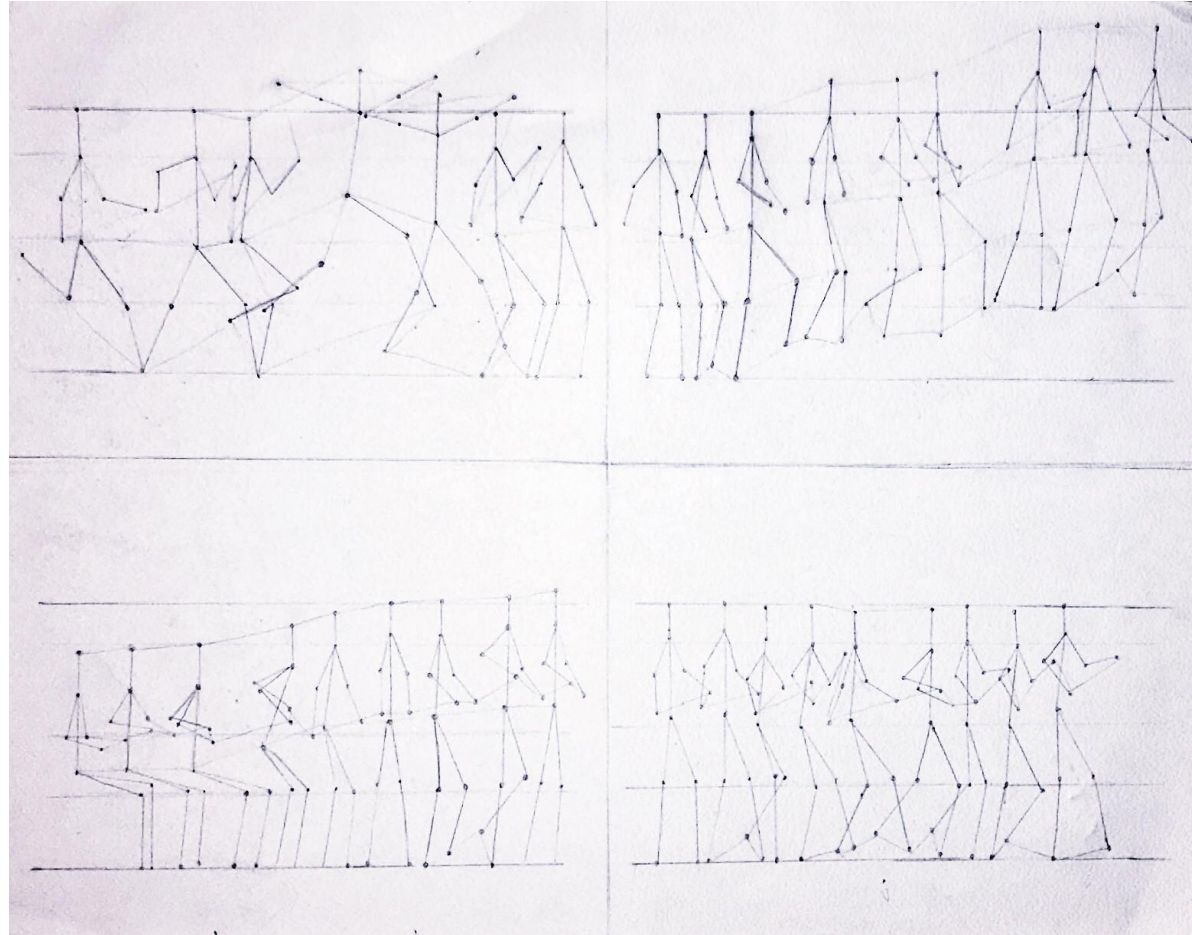
Final Project:
Creating a Space
for Human Activity

Lauren Forrest
Space and Materiality



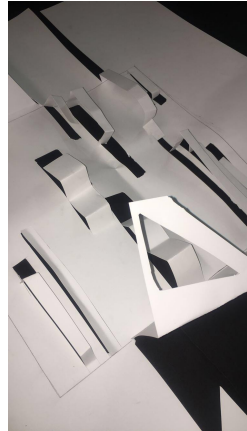
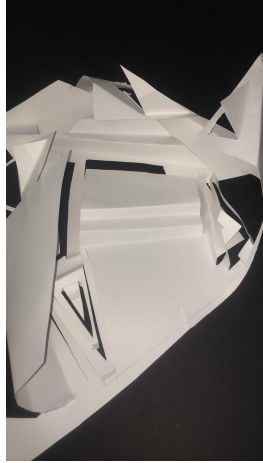
Anthropometric Drawings

For this assignment I was tasked to design, develop, and construct a selected site and incorporate four activities into the scape. These activities must be thoughtfully connected throughout the site. The chosen site for the structure is the Union Square intersection. I began the process of developing the scape by creating a series of Anthropometric drawings of the activities to document human movement. Those diagrams gave insight to potential construct designs. The activities I chose were jumping/leaping, stepping/climbing, the motion of sitting to standing, and the acceleration of walking to running.



Prototype Studies

Using aspects from the diagrams, I began to create a series of patterns and designs that could be included in the final. The patterns are comprised of paper and clay, but provide an idea of different aspects that could be translated into a three dimensional forms and used in the site design. I created a series of these designs to generate varying options from which I could quickly extract possible concepts.



Final Model

The final model of the site is sculpted from clay and reflects the formations from my prototypes in its structure. The radial form allows for fluid movement throughout the site. A common trend within all my activities is movement through a space so it was important that the structure allowed for people walking through the site. My space is both a play area for children and a space for adults to relax and watch their kids.



Final Model

The curved canopies of the structure create shade for the occupants. The structures walls and benches connect seamlessly into the ground, allowing the landscape to become one with the site structures. On one wall there is a children's play area with a climbing wall and monkey bars, on two other walls are seating for adults to watch children. In the center of the site sits layered blocks for children to climb and jump on. The way the structure is formed always for access from all sides while one side has a larger opening, acting as a gate. Overall the space encompasses all of the chosen activities.

