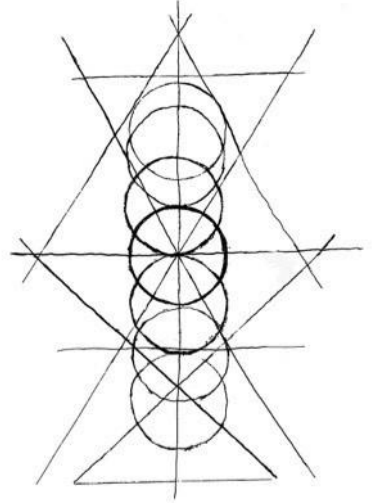


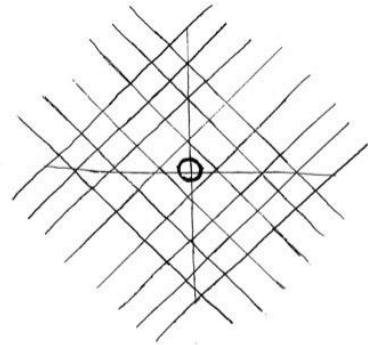
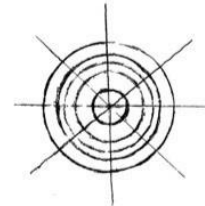
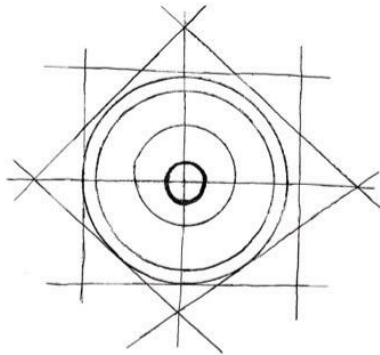
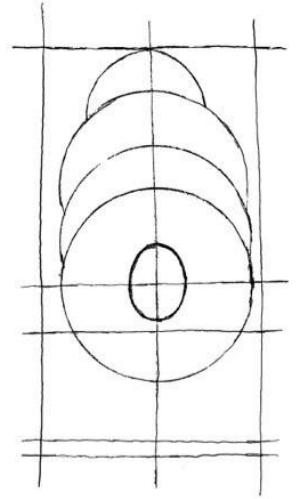
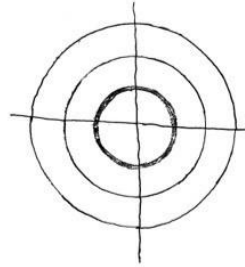
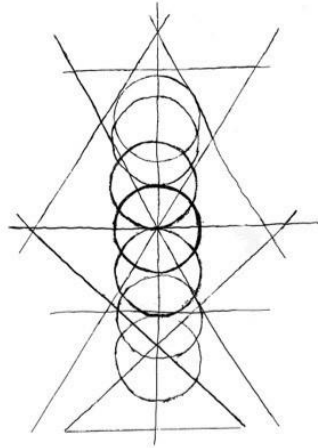
Vestment Construct

Lauren Forrest
Space and Materiality



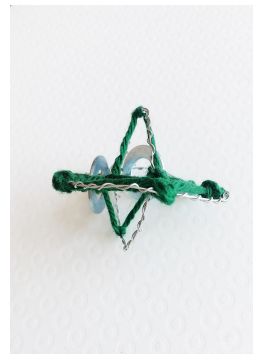
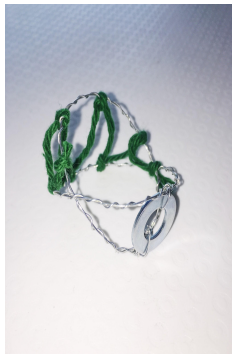
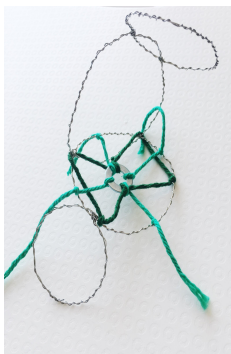
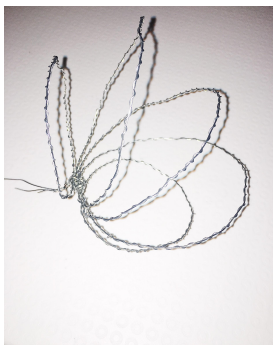
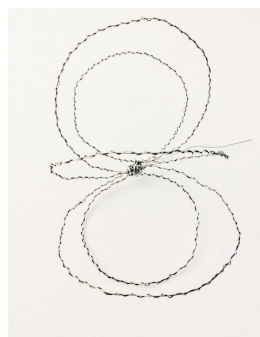
Module and Diagrammatic Influence

For this project, I chose washers as my module for the artichoke inspired vestment construct. For the garment, I took concepts from the diagrams and paper manipulations. The forms and intersections from them are directly linked to structures of the final construct. The other materials used in the garment are wire and green yarn. Wire represents the diagrammatical and geometrical forms, while the yarn corresponds to construction lines and the underlying forms of the artichoke. The color of the yarn directly corresponds to the color analysis of the artichoke and the washers act as connection points for the yarn and wire.

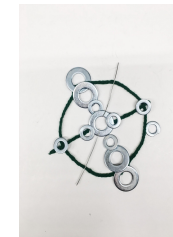
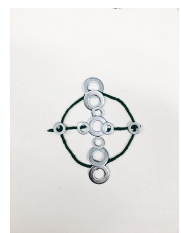
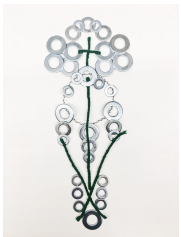
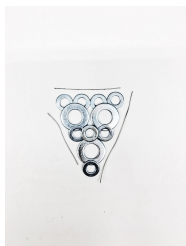
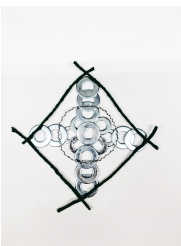


Prototype Studies

As I created a series of prototypes, I experimented with different ideas and techniques to create the garment. Each variation is based on concepts found in both the paper studies and diagrams. I “unfolded” the two-dimensional drawings to create three-dimensional structures with form and space.



Vestment Pattern Designs

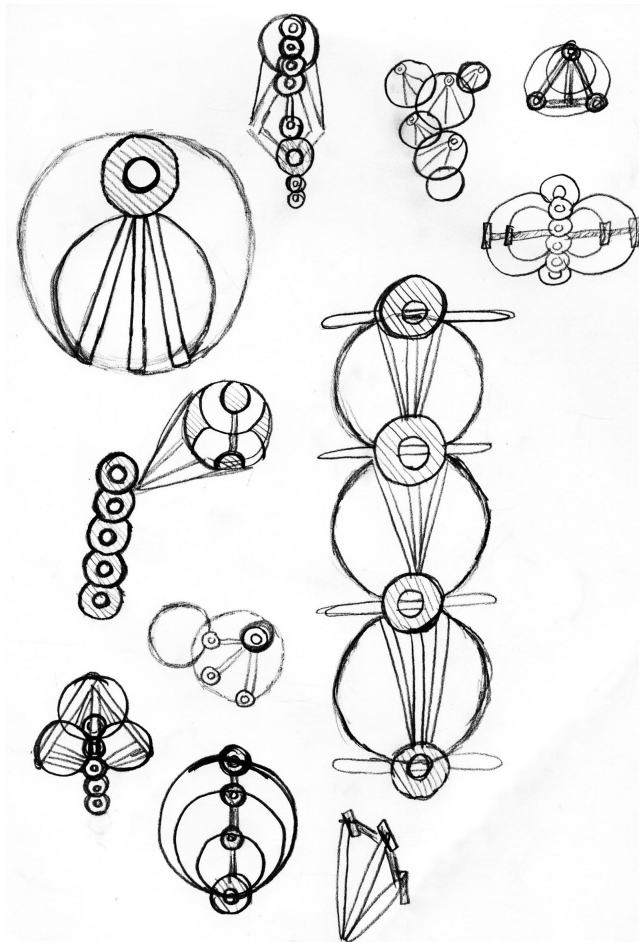


Using aspects from the diagrams and prototypes, I began to create a series of patterns and designs that could be included in the vestment. The patterns are comprised of my three materials and are two dimensional, but provide an idea of different aspects that could be translated into a three dimensional forms and used in the garment. I created a series of these designs to generate varying options from which I could quickly extract possible concepts.

Some designs represent aspects that could be included in the structure, while others provide ideas of possible overall shapes of the vestment. I used concepts such as the of circular forms and intersections from the diagrams to create many of the designs. In others I used different techniques to create patterns, including a layering effect that gave the washers the illusion of "chain mail".

Graphic Rendering

Taking inspiration from the prototypes, pattern designs, and diagrams, I created a graphic rendering of a potential garment design. The rendering shows the structure's path as it wraps around the arm, attached to the arm by circular rings that hook together. I was also inspired by the formal typology of the artichoke, I wanted to emphasize the gradient of density resulting from the continuously overlapping petals. I show this shift in density in the rendering by gradually increasing the scale of the individual aspects of the vestment. I also was able to show this density shift through the amount of detail and space that was put into the structures: near the hand the forms are very details and close in proximity, whereas, when the garment moves up the arm, it becomes more open and separated. This mimics change in the artichokes petals from the inner layers to the outermost layers.



Final Vestment Construct

Similar to the artichoke vessel construct, the final garment is a structure that both reveals and exposes; experimenting with space and depth. The vestment is a flexible yet rigid structure, some aspects of the vestment were created specifically for the ability to move fluidly and unobstructed. The forms that align with the elbow has a joint with the ability to expand and contract based on movements. The washers serve as connection points that allow the different aspects of the garment to connect seamlessly.





Final Vestment Construct

The vestment utilizes the circular forms and geometries from the diagrams, as well as contains a center axis found in the diagrams that extends up the entire structure, leading the eye upwards. Since the forms protrude at some points, it gives the vestment the illusion that it is unfolding on the body. The garment also alludes to the idea of a gradient density, similar to one found in an artichoke as the petals near the outer layer.

System Pattern Drawing

This pattern drawing reveals the overall layout of the vestment construct. The center axis is visible in this system drawing as it would wrap around the arm and folds of the structure. As all of the different forms within the garment are influenced by diagrams, the drawing and construct act both as a physical and two-dimensional composite for the designs.

