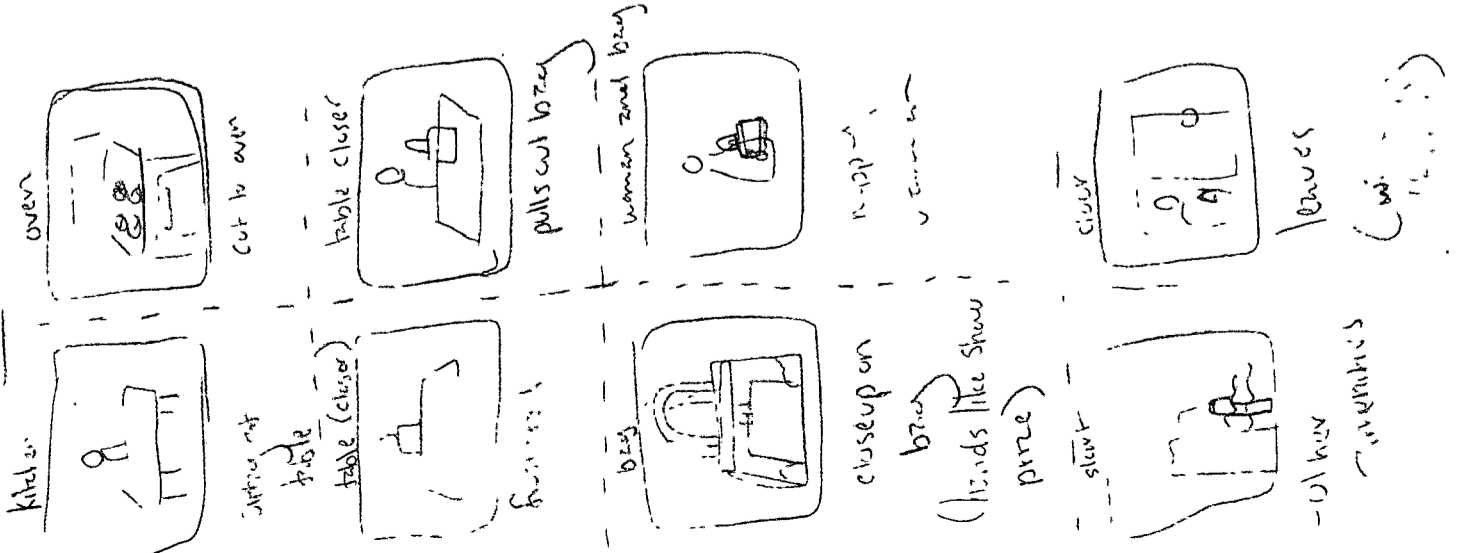


Chindogu

- Sexist vintage Commercial
- 50s/60s
- b/w or pastel hues

VERSION 2



Advertisment

VERSION 1



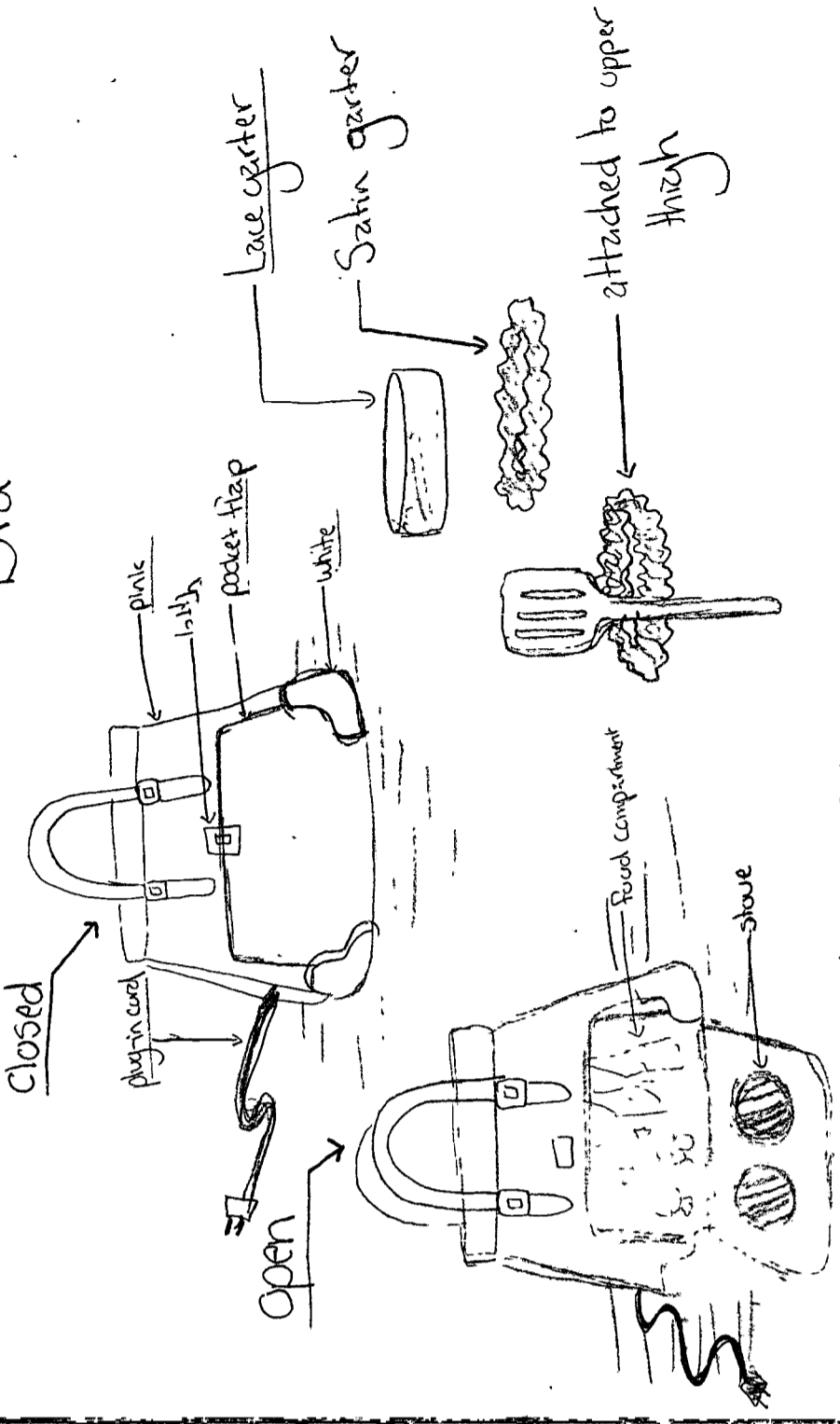
- the little woman
- the weaker sex
- frail creature

Lines: (narrator is male)

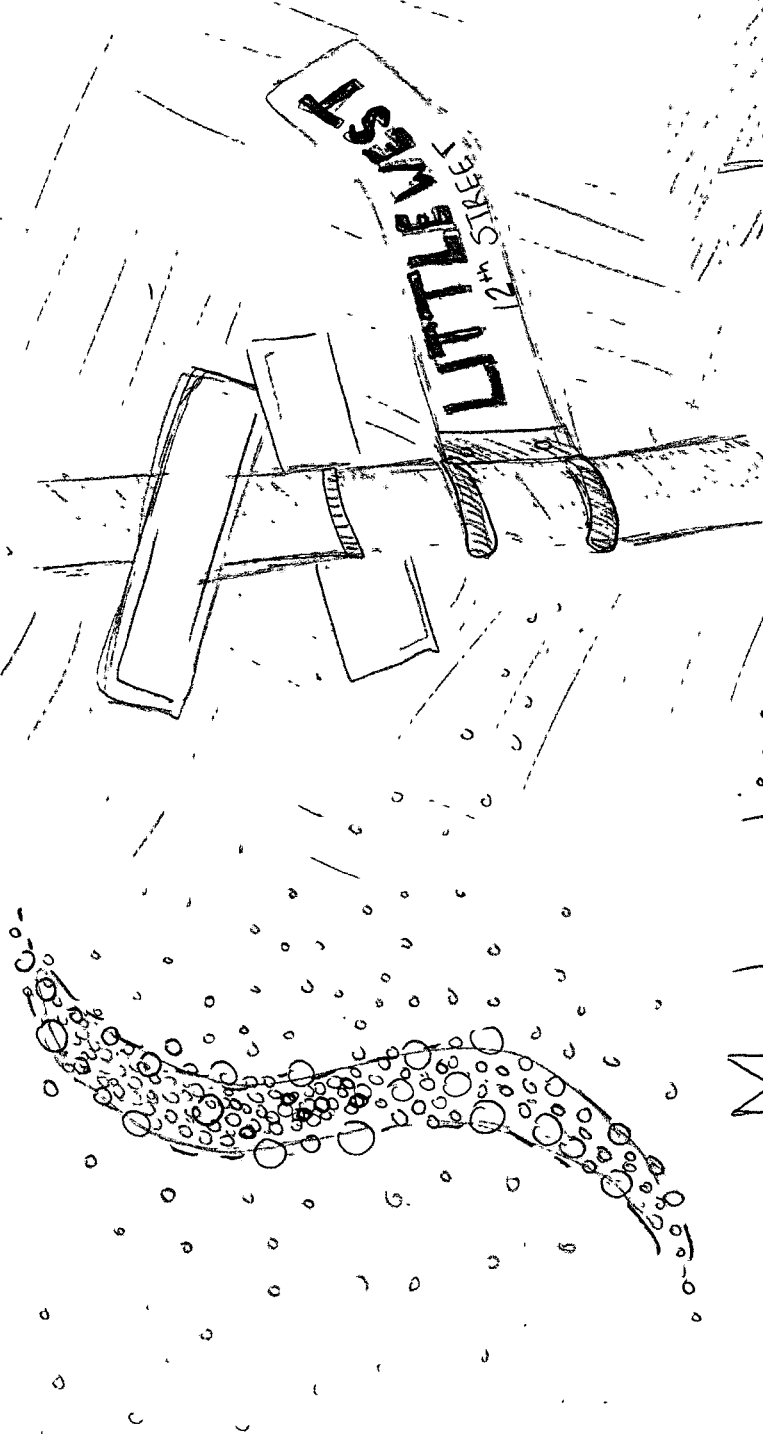
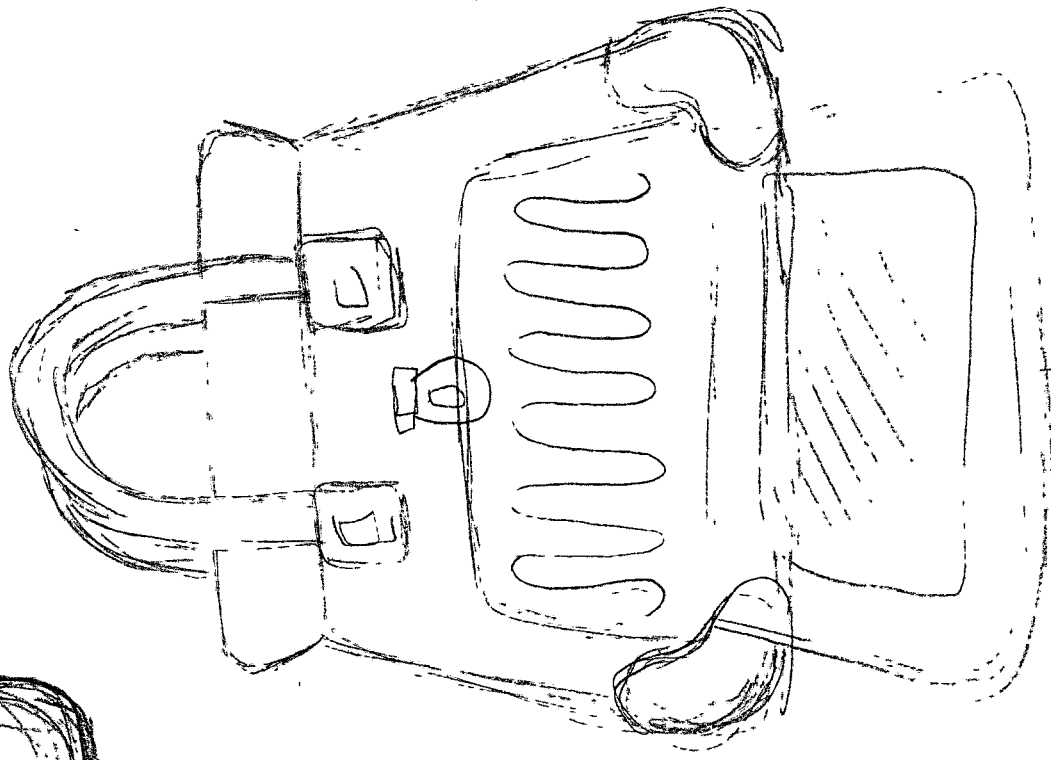
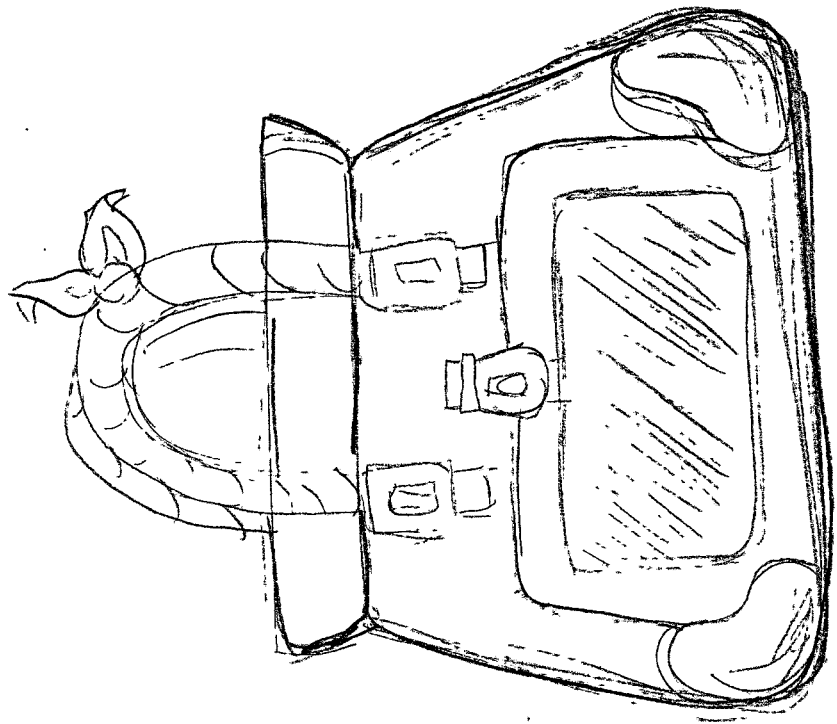
- The kitchen, the modern woman's natural habitat
- where a woman feels most at home
- It's a ladies purpose to provide for her husband, but how can the little woman perform these duties when she is forced to leave the comfort of her kitchen?
- introducing the →
- a woman's home away from home
- and you thought chambermaids were a girl's best friend
- This little woman spends her days walking miles in the kitchen - from sink to icebox, from cupboard to stove, from kitchen to dining table.
- The frail creatures work tirelessly to cook, clean, and please their men, poor old girl must be tired
- equipped with modern chut stove technology! the --- is easy enough for a woman to understand and control, no help from men required!
- Available in a diverse range of colors - pink, rose, blush, and salmon!
- also sports compartments for sauces, spices, and seasonings, everything a woman dreams!
- Its specially designed --- makes it light enough for a frail woman to carry,
- specially designed for the weaker sex's small delicate hands.
- All you need to do is plug in and ...!

Kitchen To-Go

- Portable purse stove
- Spatula Garter
- Tong Garter?
- Bra



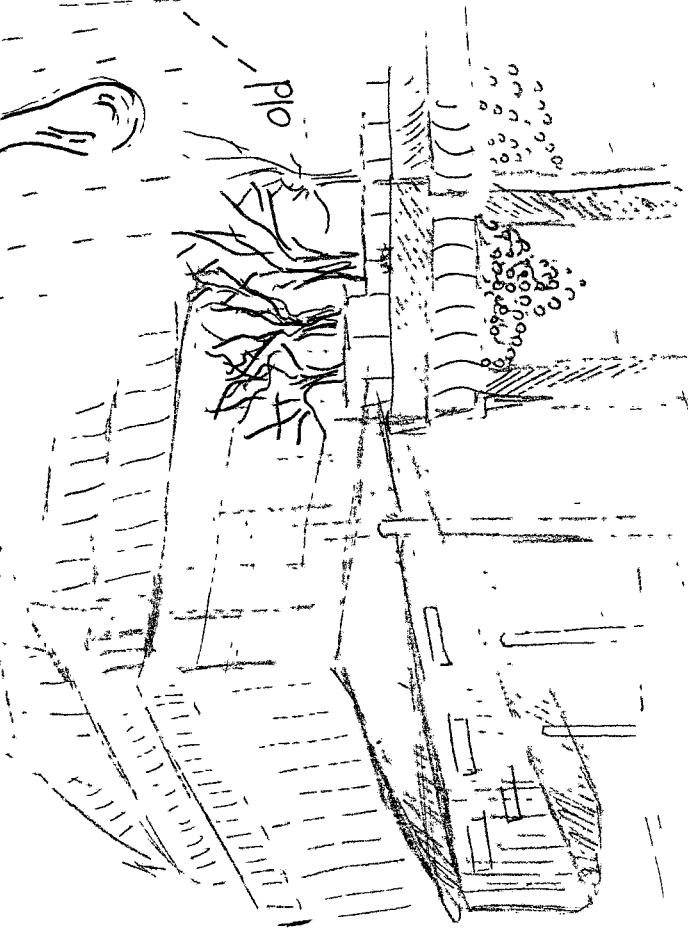
- new you won't have to tell your wife to get back in the kitchen, she is the kitchen!
- Also features a little extra spatula holder, so a lady doesn't misplace her utensils.
- But where on earth does she keep her ---
- don't worry we have a solution for that too!
- "stitch" wintz
- The versatile --- has everything a woman could ever need ... or want!
- Women grab your husbands and dig for his essential modern tool
- Men tell your wives you've found their missing --- gifts!
- Now get out there and make me a sandwich.



--- Meat packing District ---

SMS
MEATPACKING

- cobblestone streets
- old factories
- old railroad
- old architecture



- Highline
- Whitney Museum
- Trendy clubs/restaurants
- Designer clothing stores
- Repurposed Buildings