

Timeline Ideas

Qihong Yu

Evolution of Maps:

Paper map

1990 computer map

1993 modern gps

2005 google maps

2009 handheld GPS

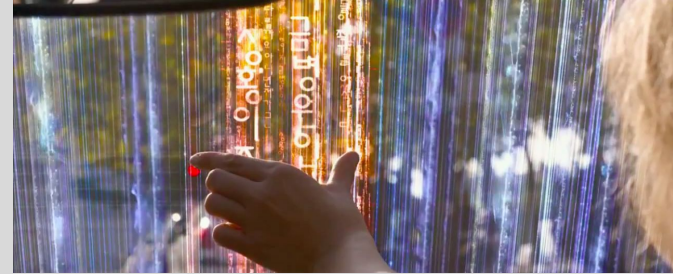
Future:



transparent arrow guide shown on car window



3d Projection map from phone



map chip planted in human: visually shows directions without gadgets

Why has it changed?

technology

How has it stayed the same? (same function, same design aesthetic, etc)

function-navigate

method of measurement,

some of the design aesthetic

audience/target market-people with electronics

In what way does this form successfully appeal to this audience?

convenience

A personal interpretation Evolution of my bedrooms

Presentation: Illustrations of the bedrooms that I've lived in
and the ones I imagine having in the future

-Shows users and events happening in my bedroom.

Evolution:

1st bedroom: slept with mom (not perfect parental relationship)

2nd: first night sleeping in the new bedroom (bigger room, family situation more comfortable)

3rd: partly designed by myself, (making my own decisions)

4th: college, completely setted up by myself, more organized (adulting, trying to be independent)

Future:

3 iterations showing financial expectation and personality or life in general



Current bedroom

2. Why has it changed?

moving

family financial situation

growing up

3. How has it stayed the same?

function unchanged - providing a comfortable, personal space

5. In what way does this form successfully appeal to this audience?

having more and more control over the space as I grow up

Public Bathroom Evolution



19th century: barely any indoor toilets, outhouses and chamber pots



City of Toronto Archives, Series 376, 50376_8005_10085

**20th century:
indoor toilets introduced**



**1964: no more racially
segregated bathrooms**



Mid 20th century women's bathroom



Today: more and more gender neutral bathrooms

Future stages:

- more privacy between urinals
- stool analysis and urine test installed in toilets
- all gender neutral, all includes cubicles for families and people with disabilities.

2. Why has it changed?

privacy -> location change

better living condition - cleaner environment (rich countries), better toilet, plumbing system, ac, fan, ect.

politics - The Civil Rights Act of 1964 -> end of segregated bathroom

women's and men's bathroom interior becomes similar

3. How has it stayed the same?

Function

Cubicle Design

4. Audience-Everyone

5. In what way does this form successfully appeal to this audience?

more privacy, sanitized, comfortable.

