

# INSPIRATION.

my final project was inspired by the erection of the berlin wall, separated into the east and west.

i found this interesting because both sides were the same country; it had literally separated families. however, the east side was vastly different from the west--the world had seen completely polar sides due to the extreme hatred towards opposing ideologies.



the east side was an executive decision made by the german people to keep the people contained, to protect citizens from capitalism. however, the west side thrived and became a wealthy city. the wall, lasting almost thirty years, alienated families and friends. no wall side could see each other, despite being of the same blood.

it is said that when the announcement of the demolition of the berlin wall would take place in 1990, the people immediately ran with pickaxes, nails, and hammers to destroy the wall in unison. the wall, that became the biggest in-your-face representation of opposing beliefs, ripped apart the people. its demolition led to peace and unity.

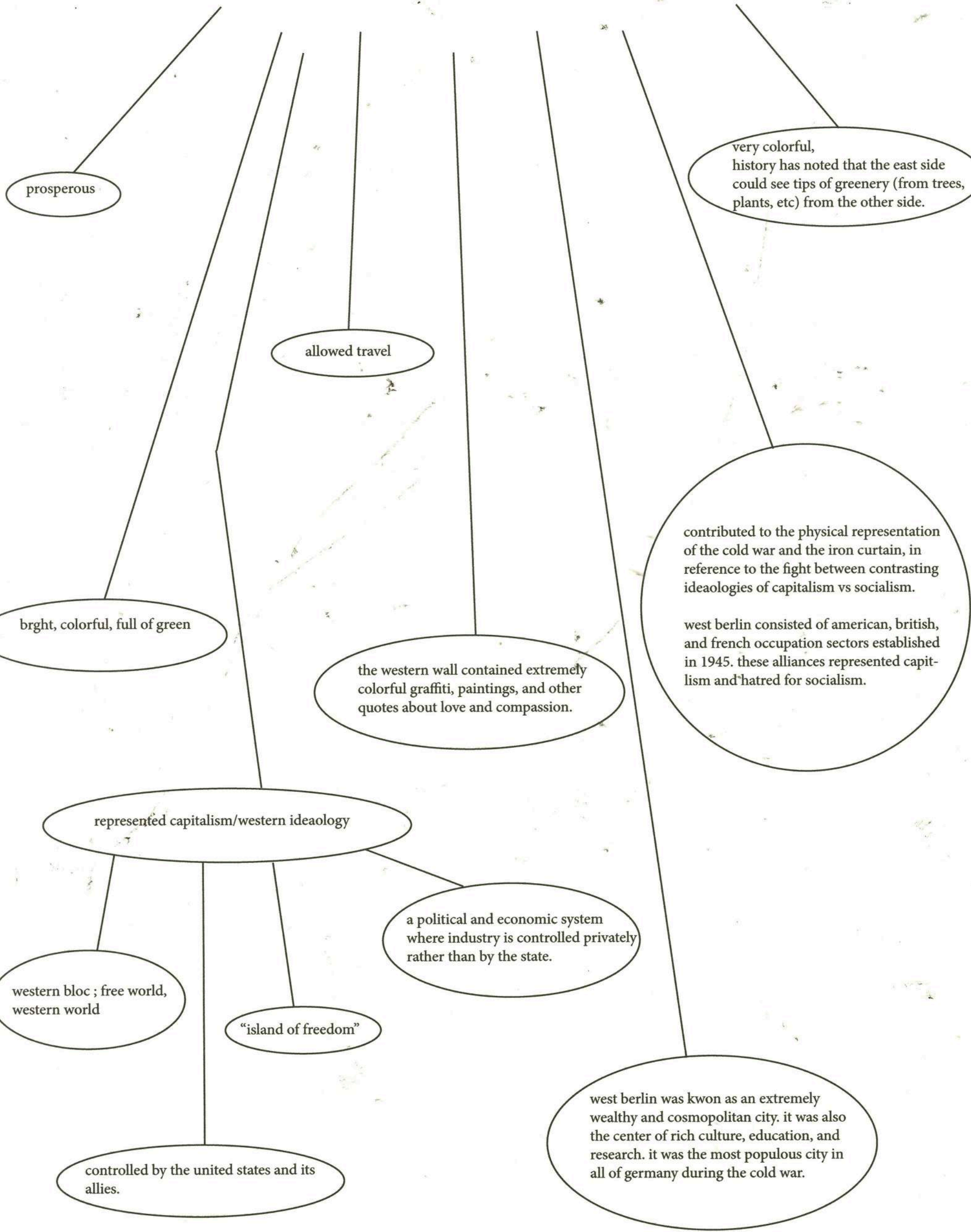
i am korean-american, and i wanted to use this project to open my eyes to splits within countries, because my family members generations before me experienced the erection of the 38th parallel, separating the north and the south koreas.

my families, both my mom and dad's side, experienced the loss of friends and family due to the separation of the north and south. i desired to trace back my cultural identity and confront my ancestry by looking in foreign, unknown places.

i know nothing of berlin, i hardly know the logistics of politics. this ambiguity and mystery is what inspired me to create this project. i also used design strategies that i never used before, so most of my works are digitized.



# WEST BERLIN.



prosperous

allowed travel

very colorful, history has noted that the east side could see tips of greenery (from trees, plants, etc) from the other side.

brght, colorful, full of green

the western wall contained extremely colorful graffiti, paintings, and other quotes about love and compassion.

contributed to the physical representation of the cold war and the iron curtain, in reference to the fight between contrasting ideologies of capitalism vs socialism.

west berlin consisted of american, british, and french occupation sectors established in 1945. these alliances represented capitalism and hatred for socialism.

represented capitalism/western ideology

a political and economic system where industry is controlled privately rather than by the state.

western bloc ; free world, western world

"island of freedom"

controlled by the united states and its allies.

west berlin was known as an extremely wealthy and cosmopolitan city. it was also the center of rich culture, education, and research. it was the most populous city in all of germany during the cold war.

# EAST BERLIN.

gray

absolutely banned travel

gloomy, not much produce  
grew

the east side represented communism. the  
wall was erected to keep the people in,  
rather than out. but soviet russia claimed  
that it was to keep capitalism out.

in the 28 years of the wall's erection, 125-206 doc-  
umented people were killed trying to escape from  
the east side. however, the german government did  
not count many deaths so it is still unknown.

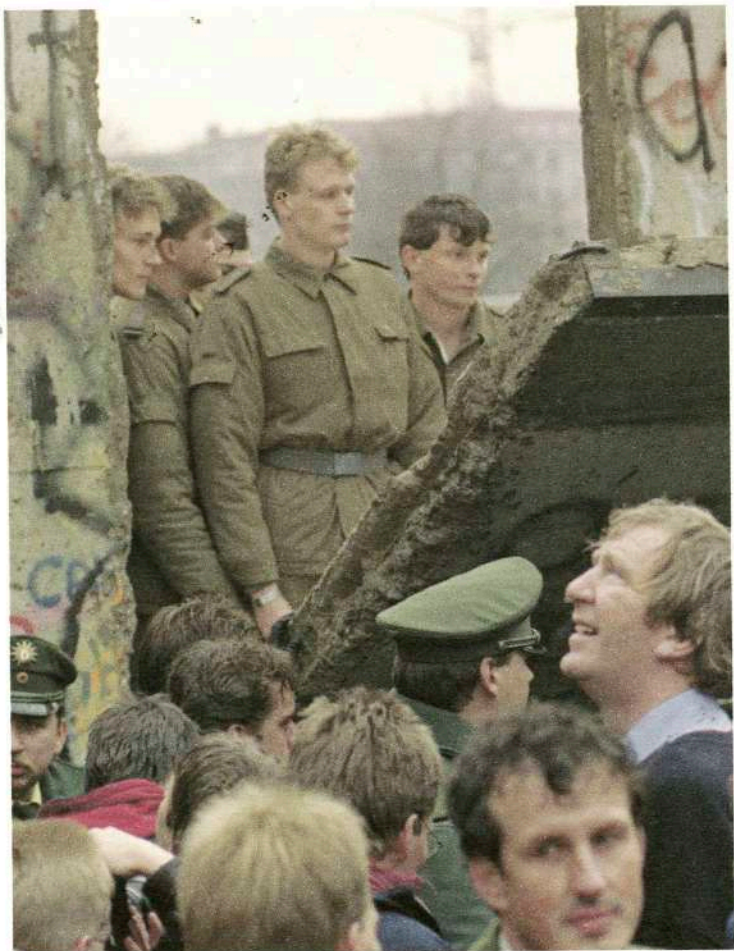
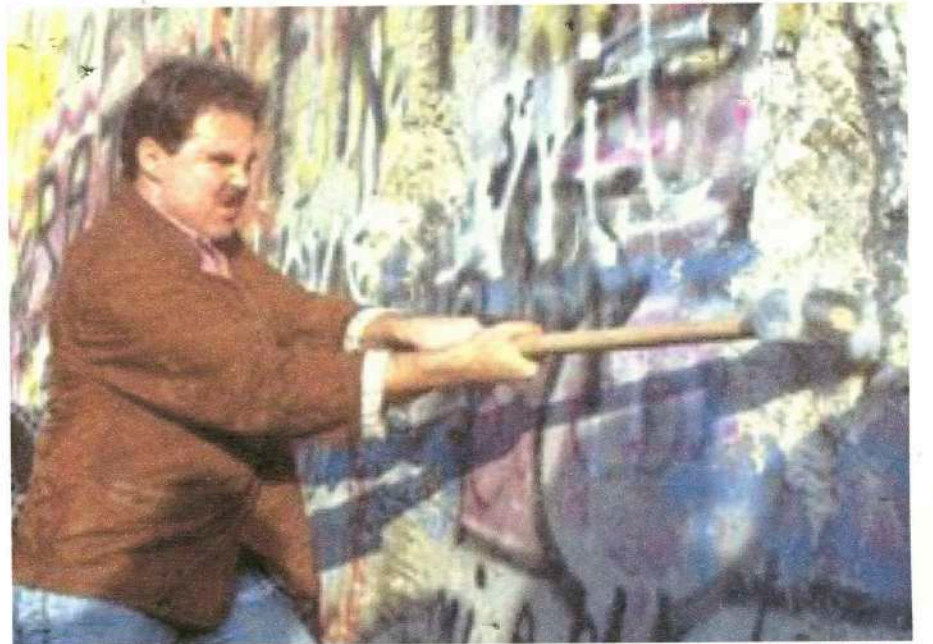
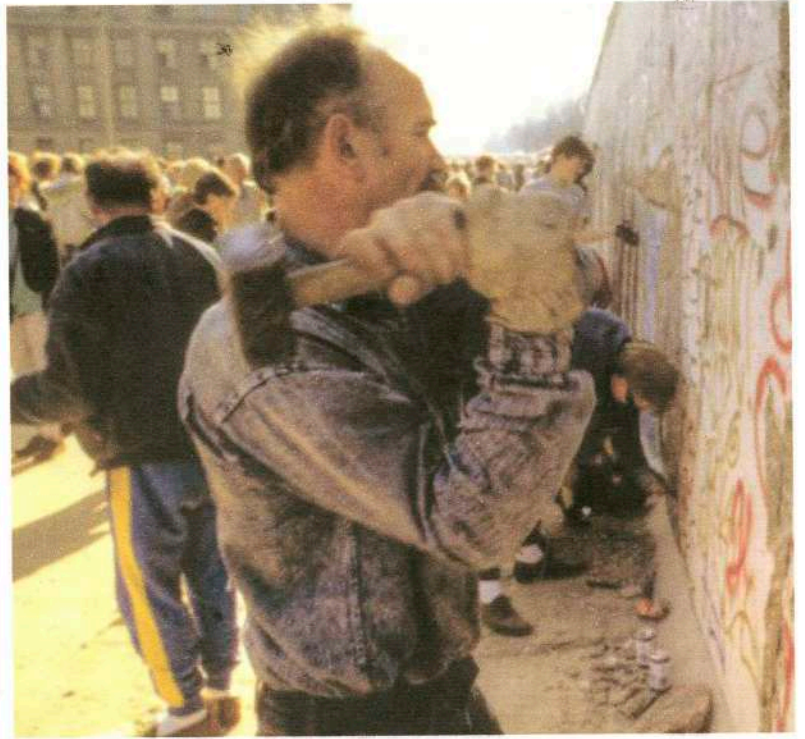
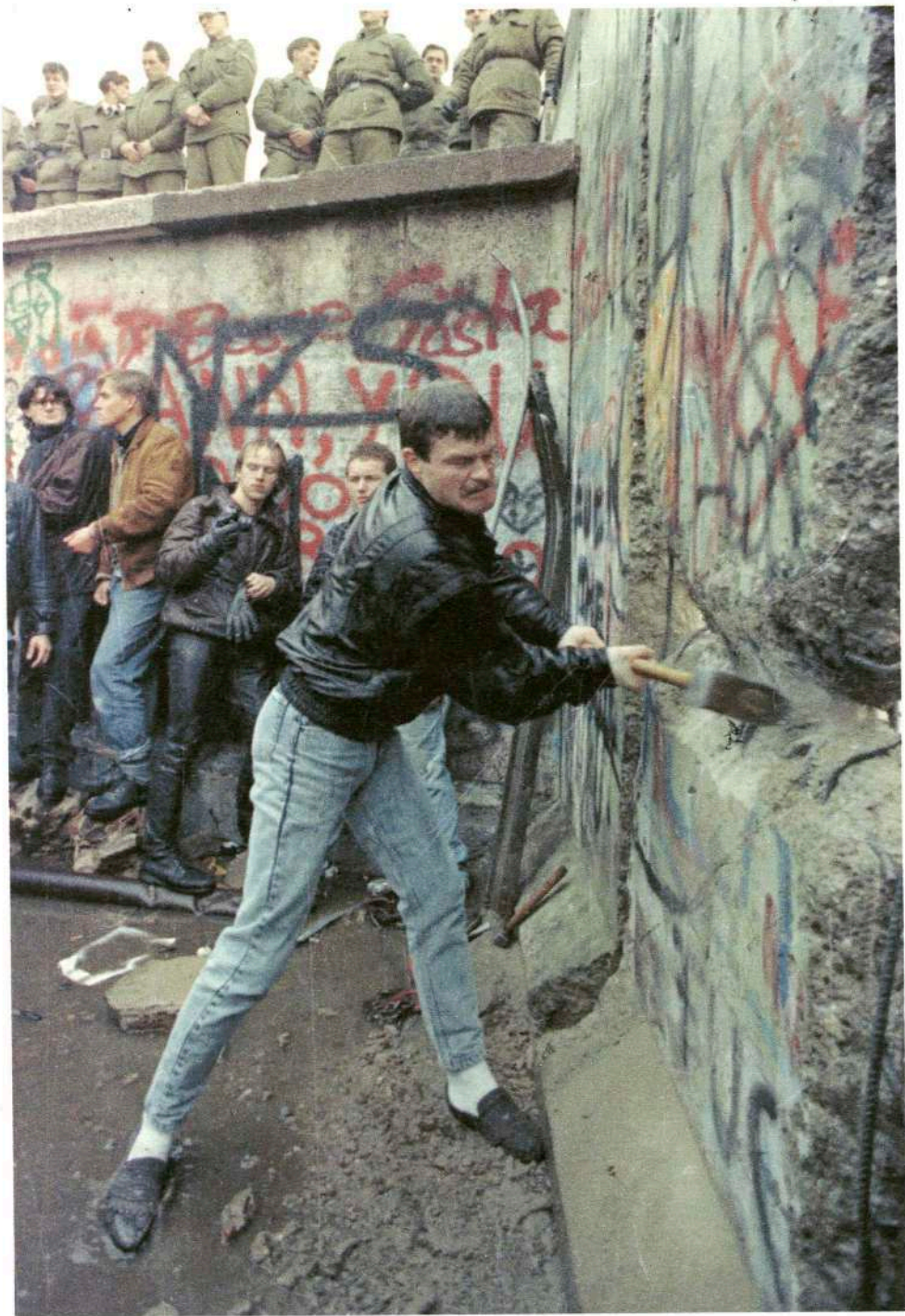
a prime example of escape is peter fechter,  
an 18 year old boy that was shot while trying  
to flee from the death strip. he bled to death  
and no one was allowed to help him due  
to the guards gatekeeping his body. history  
notes that the west side began rioting for his  
aid.

desperation ;  
peoples' lives were controlled to even  
their speech, so people were desper-  
ate to escape the wall. people tried to  
climb, jump over, and distract guards  
to try to go to the west side.

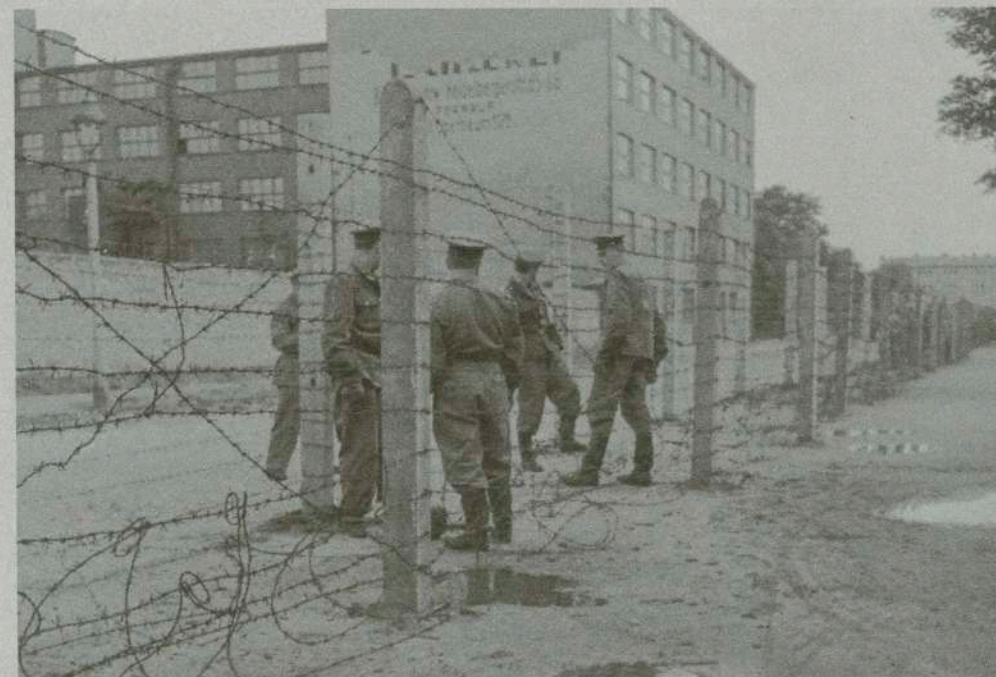
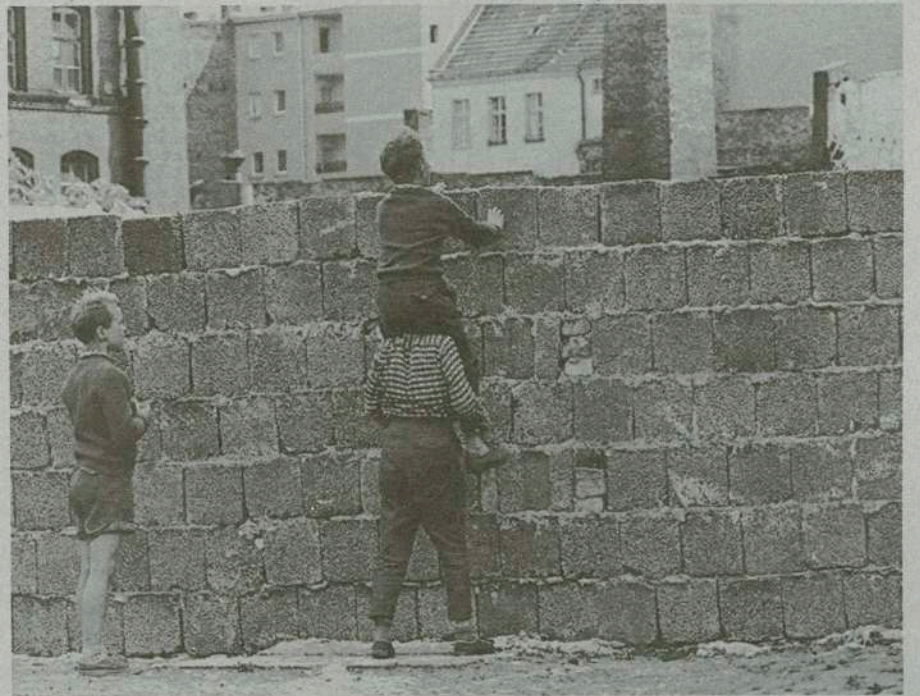
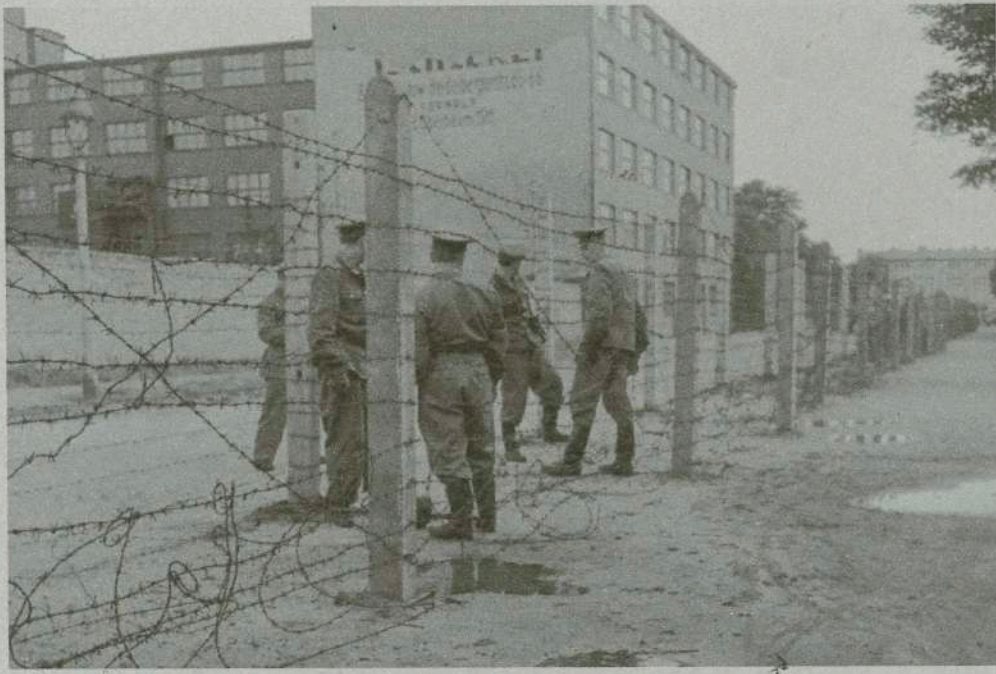
separation

the eastern wall had no graffiti on it due  
to guards monitoring the east side. the  
west, however, is still very colorful from  
artiworks left behind.

# RESEARCH.



# RESEARCH.



# INTERVIEW.

interview with my grandmother, who witnessed the split of north and south korea.

## how old were you when the koreas split? what is your first memory of it?

i was around 7-8 months old. my father left the family to pursue his studies on the north side prior to the split, and intended on returning. it was not a permanent stay. however, due to the erection of the 38th parallel, he was not able to return. however, it is presumed that he is still alive and living as a government scholar in the north.

## have you seen him since?

i have not. i still don't know what he looks like. i grew up without a father in my life.

## how do you feel about the north side?

i reject communist ideology and the way kim jong un governs his people. but i do not hate the people. the north are my brothers and sisters--it is painful to know that we are the same kind, but we will never interconnect with one another.

## do you hope for complete denuclearization and the reunification of the koreas one day?

i hope for it, but i believe that it is wishful thinking. our worlds are too different for compromise. although i believe that when kim jong un proposed denuclearization to our president moon jae in, i found myself shedding tears of happiness.

## do you think the split was political?

yes absolutely. which is why it is so much more painful. because we sacrificed families and friends in the name of proving who was right, but it resulted in pain nonetheless.

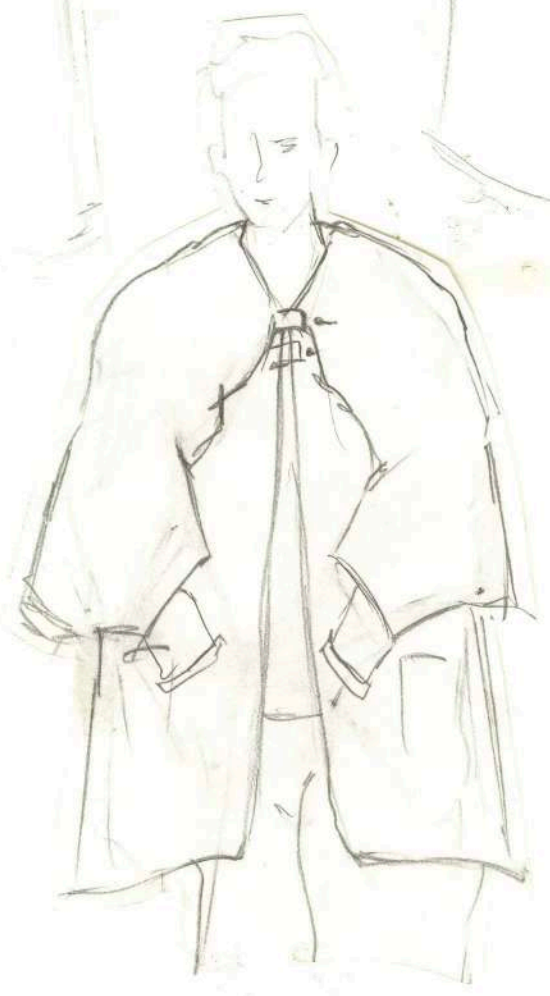
## do you know anything about what's going on in the north?

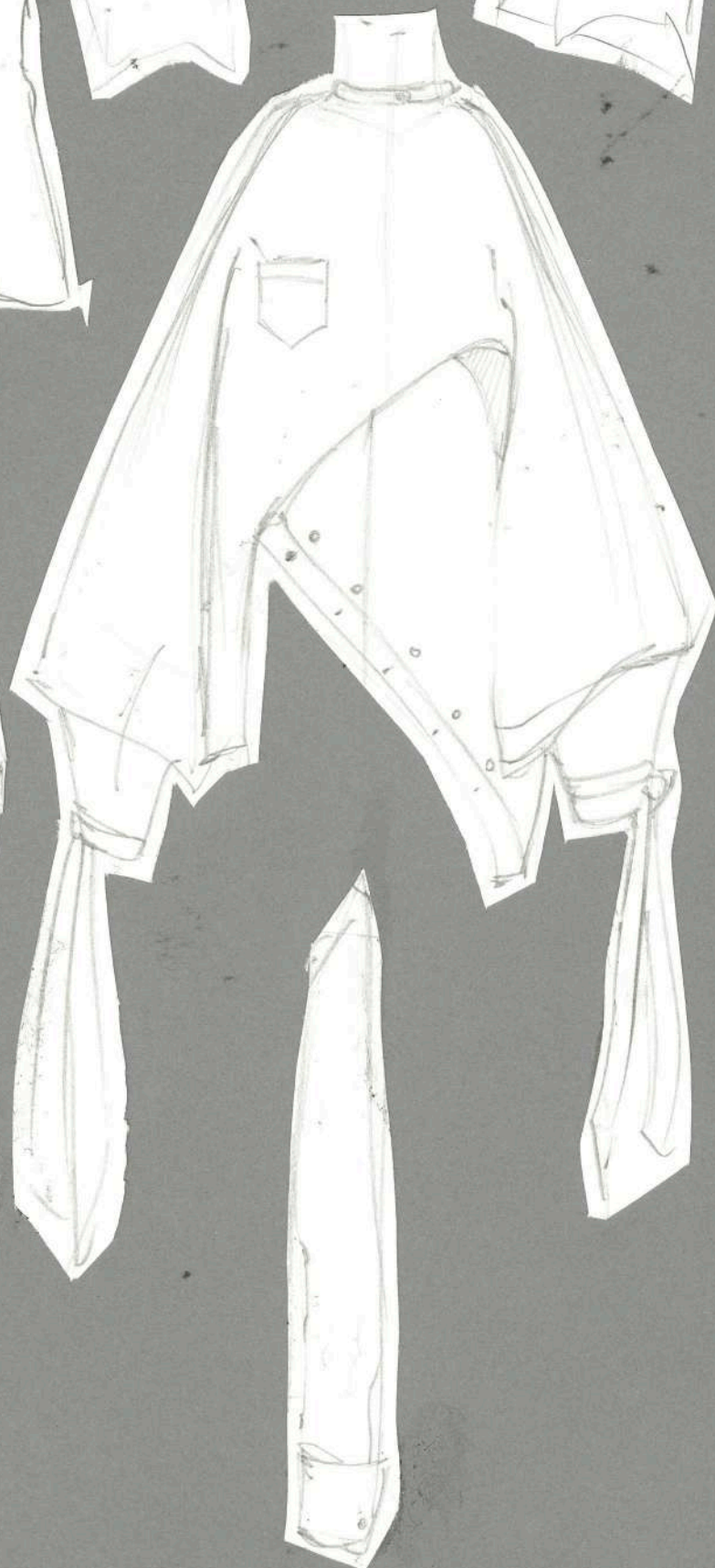
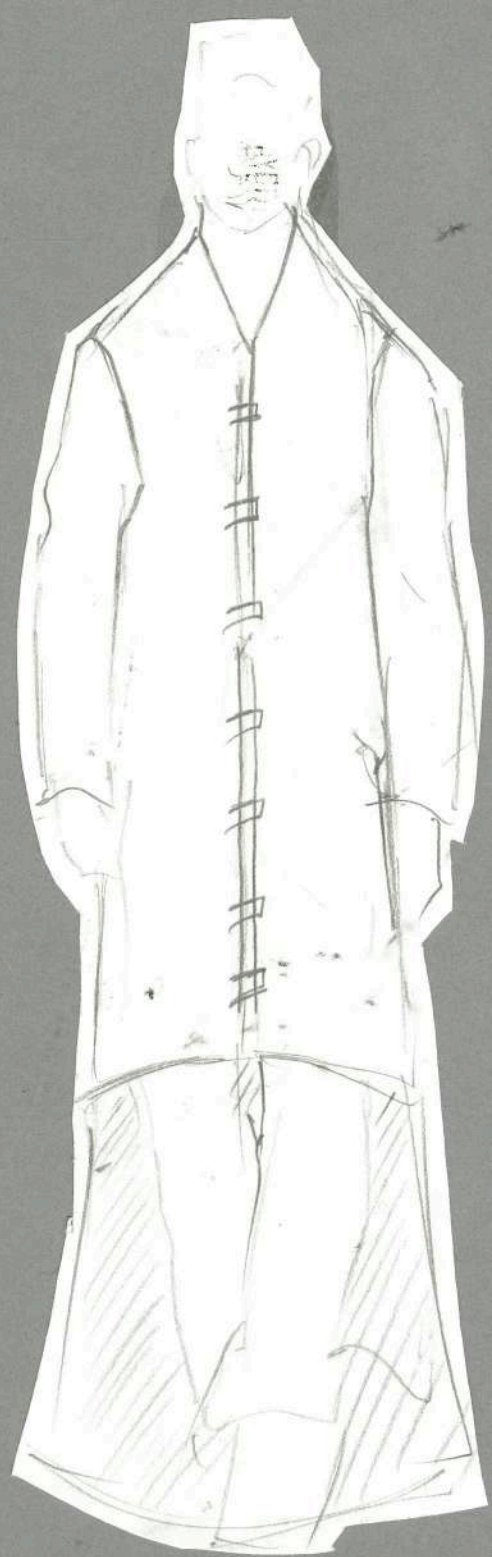
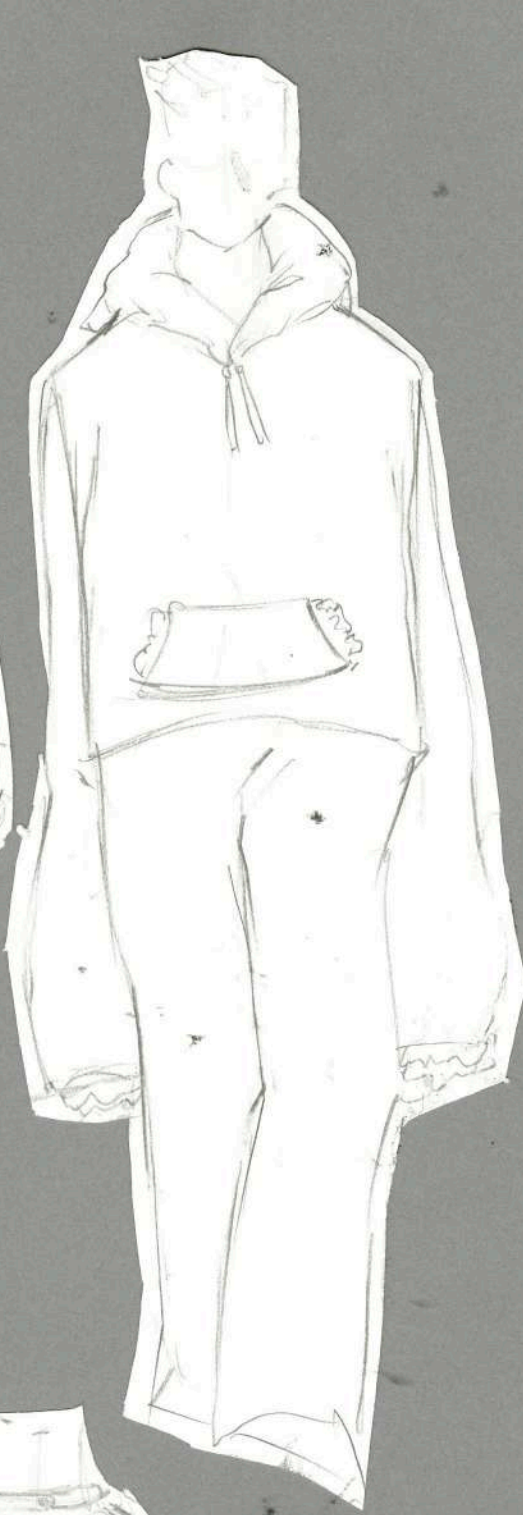
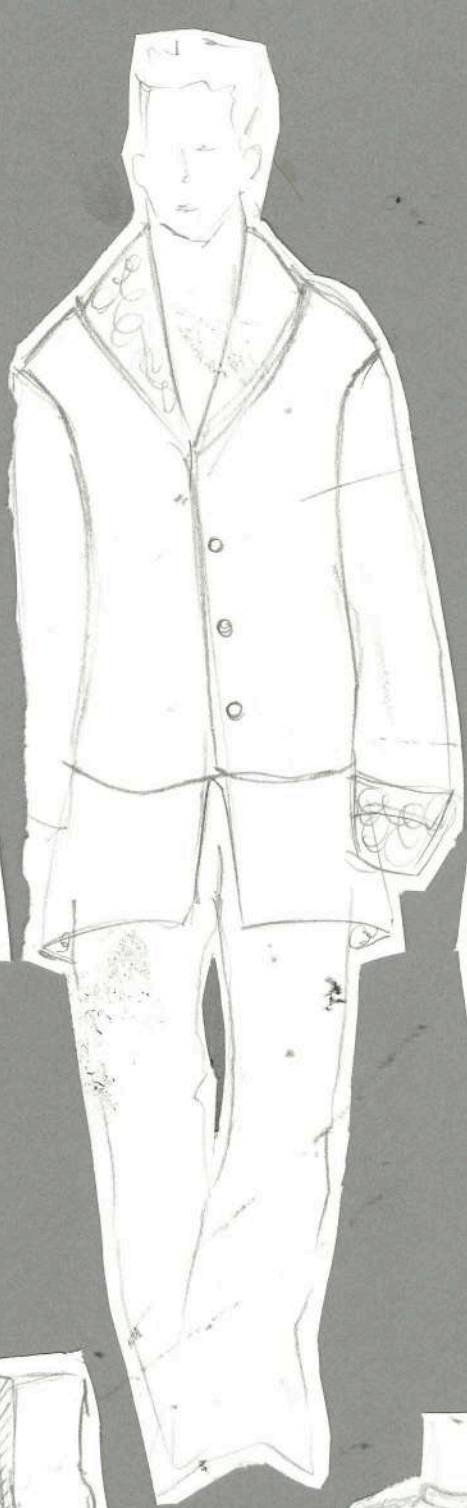
ensorship is a big issue on both sides, so i'm not too sure. north korea is especially censored, the citizens do not know of the outside world. american movies are banned and traditional korean is used. our dialects have become so different because the typical south korean dialect uses english cognates.

## do you have any final words to finish off this interview?

continue loving. spread love always, and be kind.

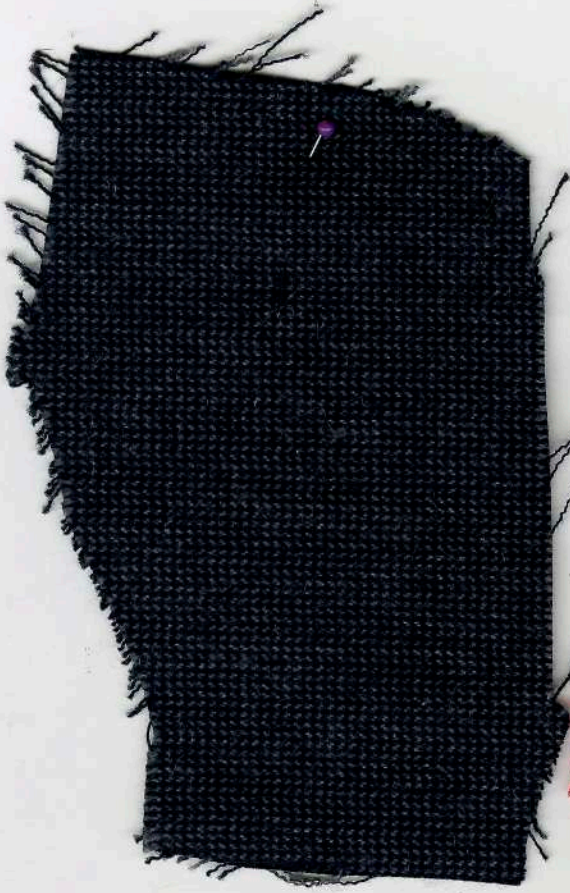








*MATERIALITY.*



# MATERIALITY.

101





POLYESTER.



ALPACA WOOL.



COTTON.



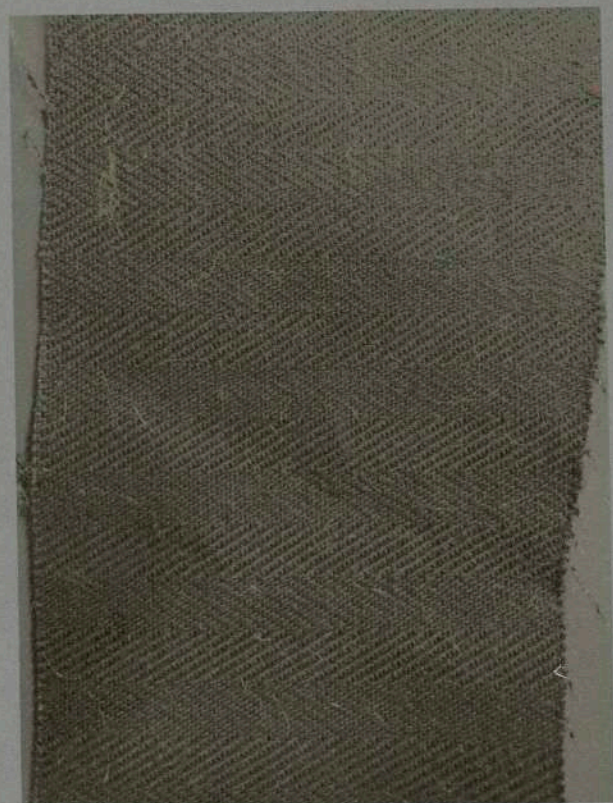
WOOL.



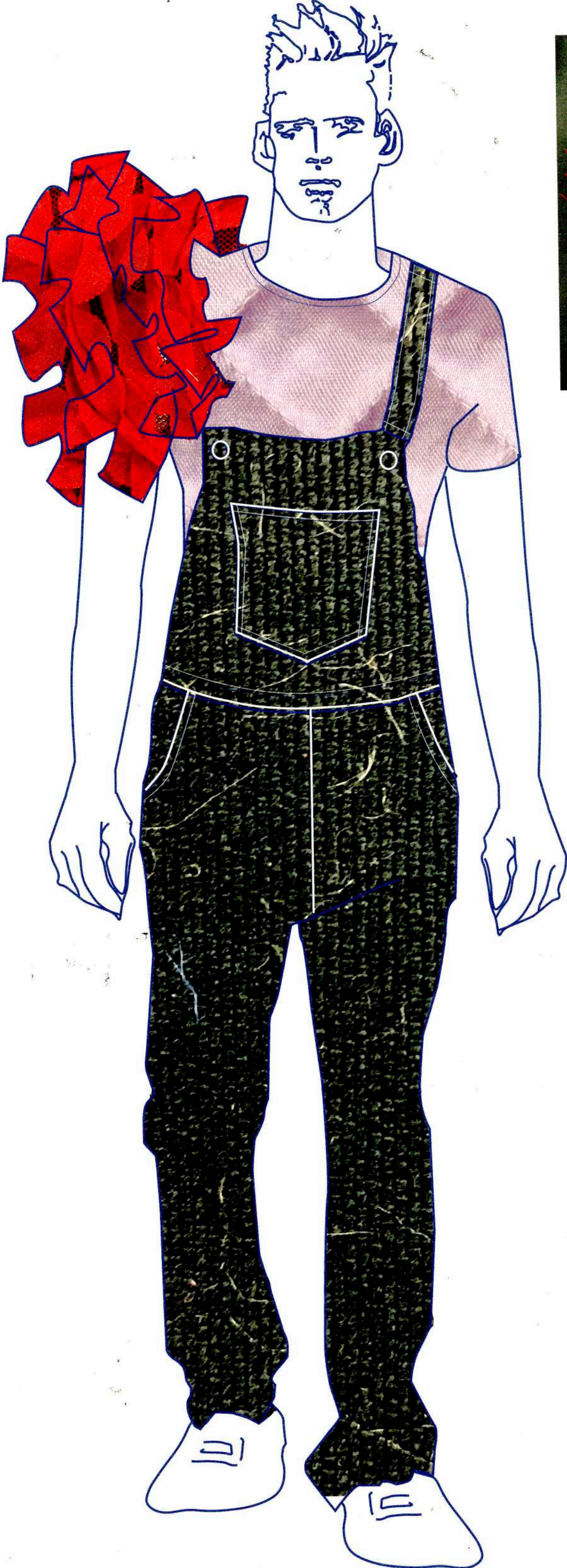
RAW SILK.



ALPACA WOOL.



100% COTTON.



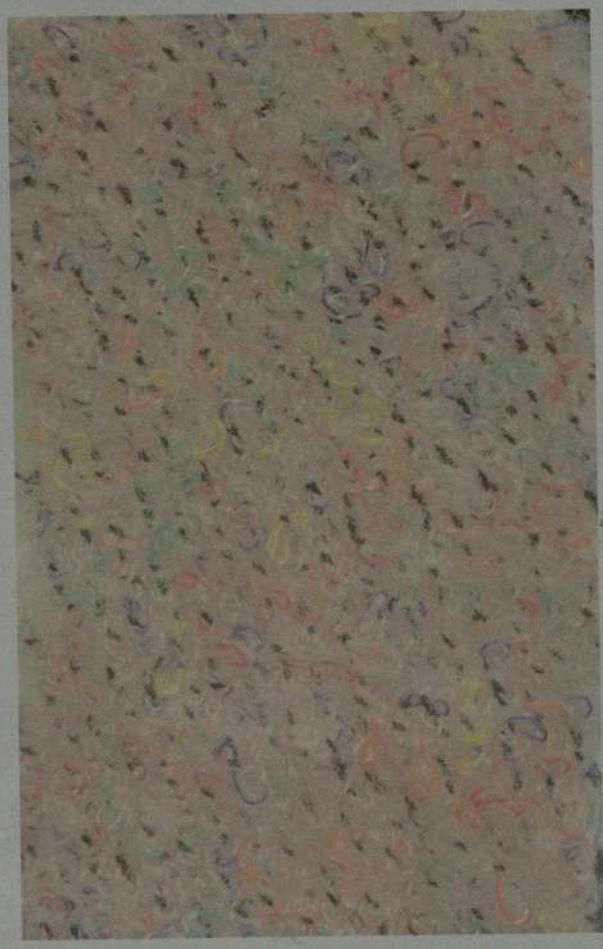
NOVELTY FABRIC.



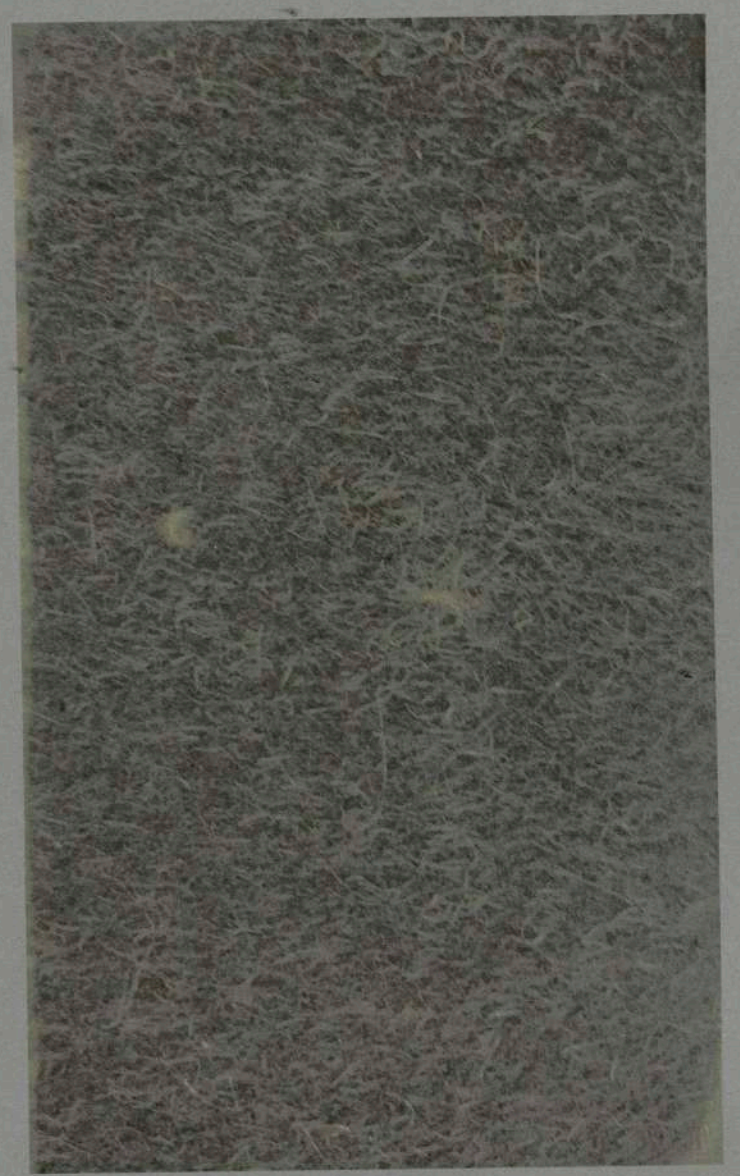
POLYESTER.



WOOL/ANGOLA.



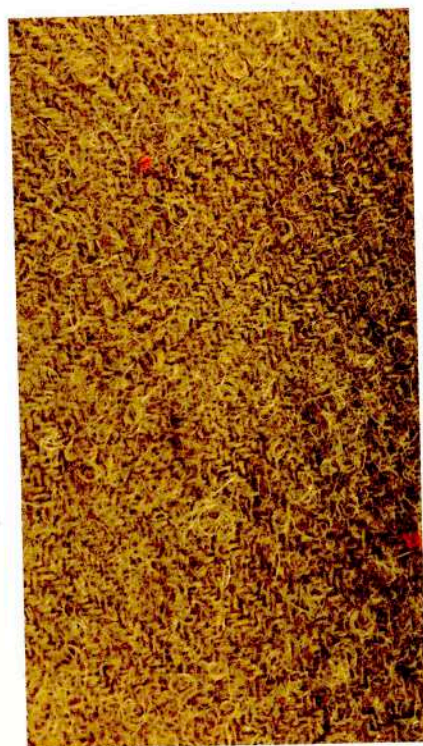
NOVELTY FABRIC.



WOOL



COTTON.



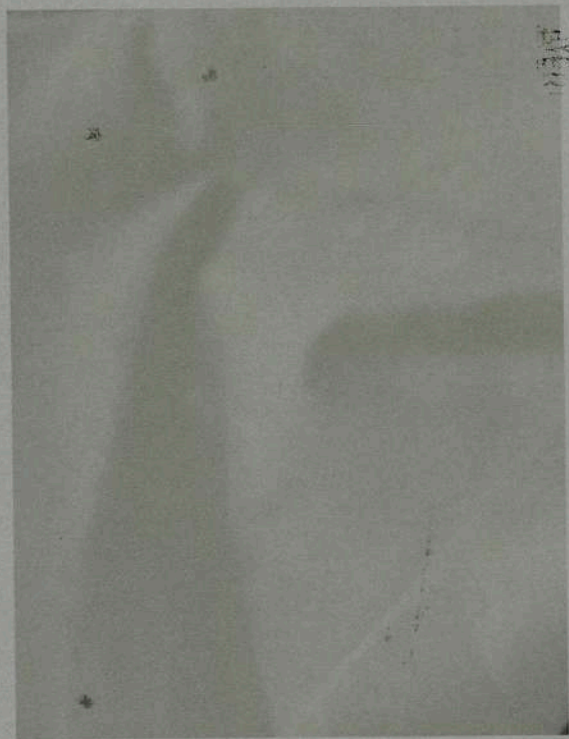
WOOL



BOILD WOOL.



POLYESTER.



COTTON.

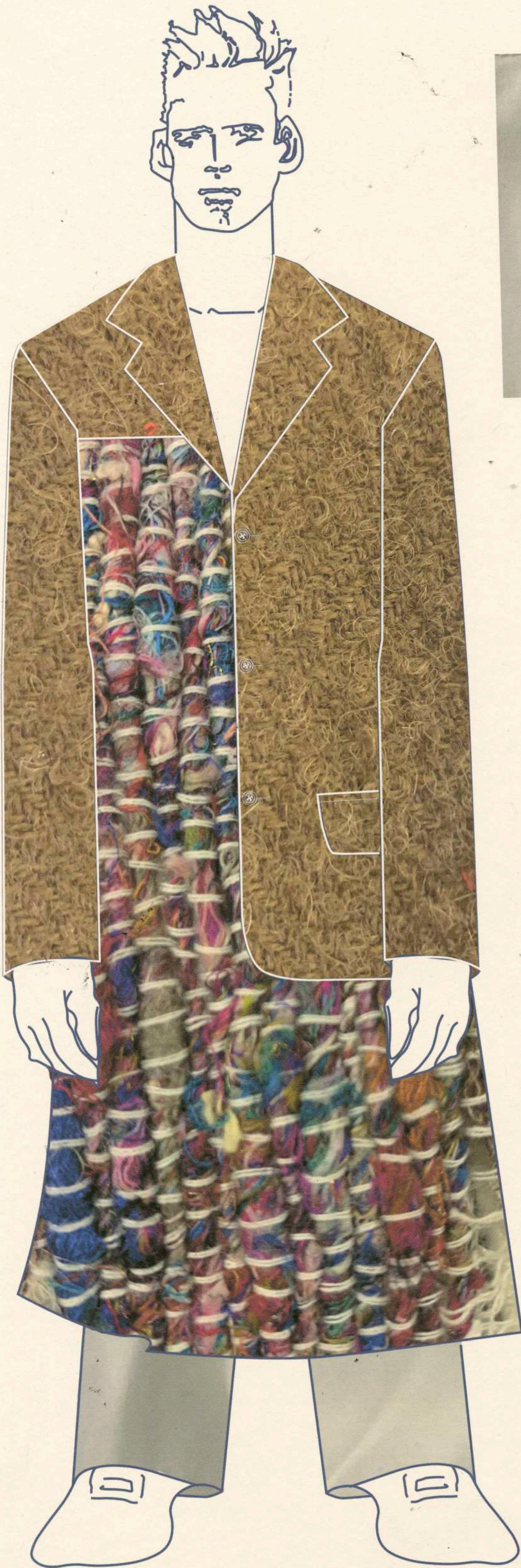


ALPACA WOOL.

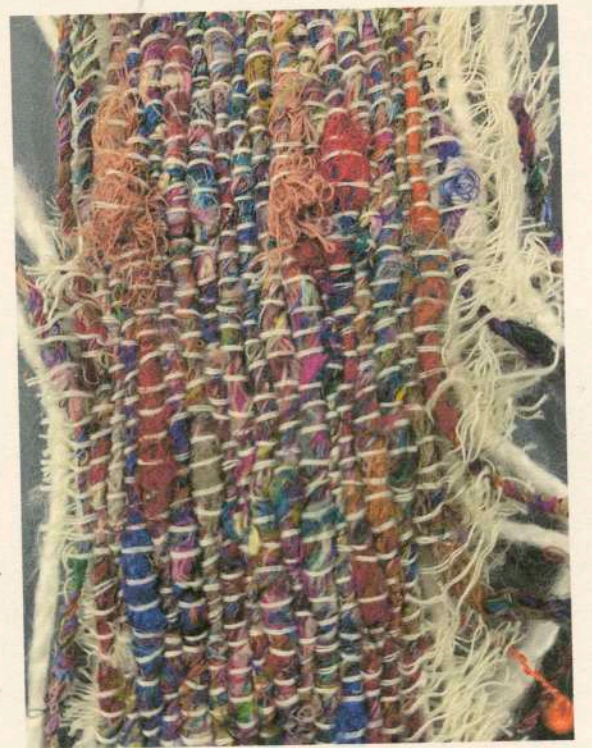


WOOL/ANGOLA.





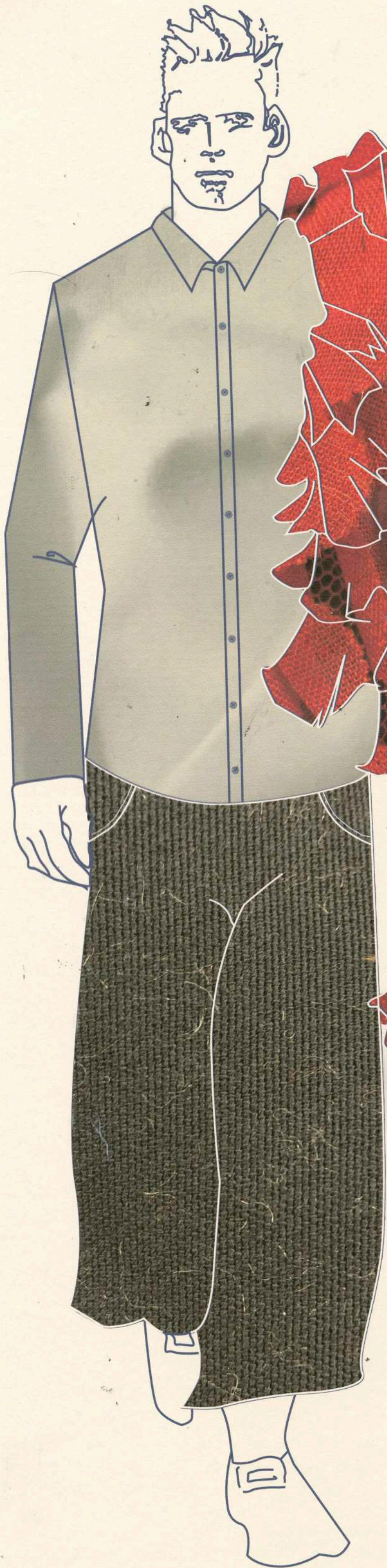
COTTON.



RAW SILK.



WOOL



WOOL.

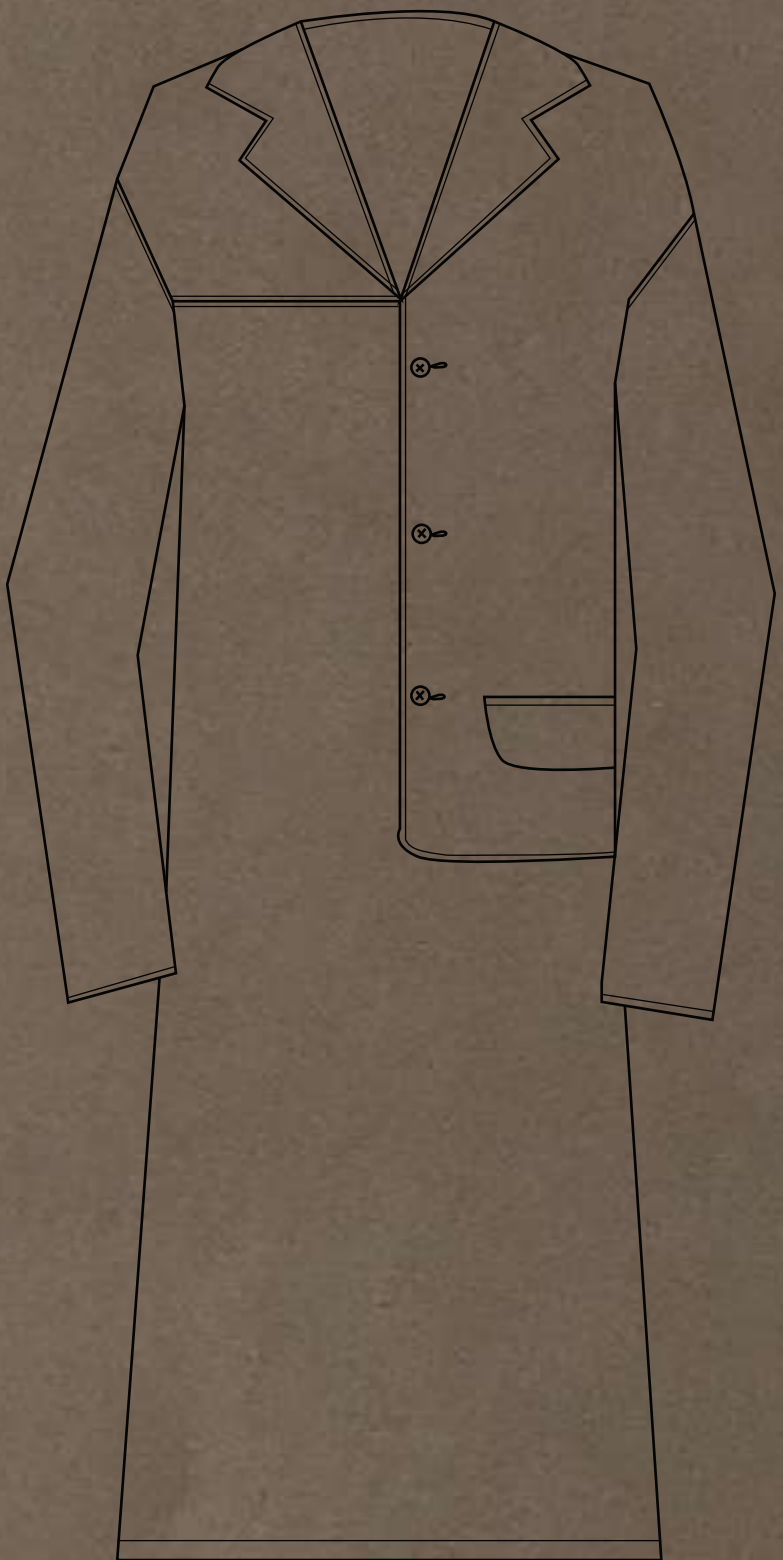
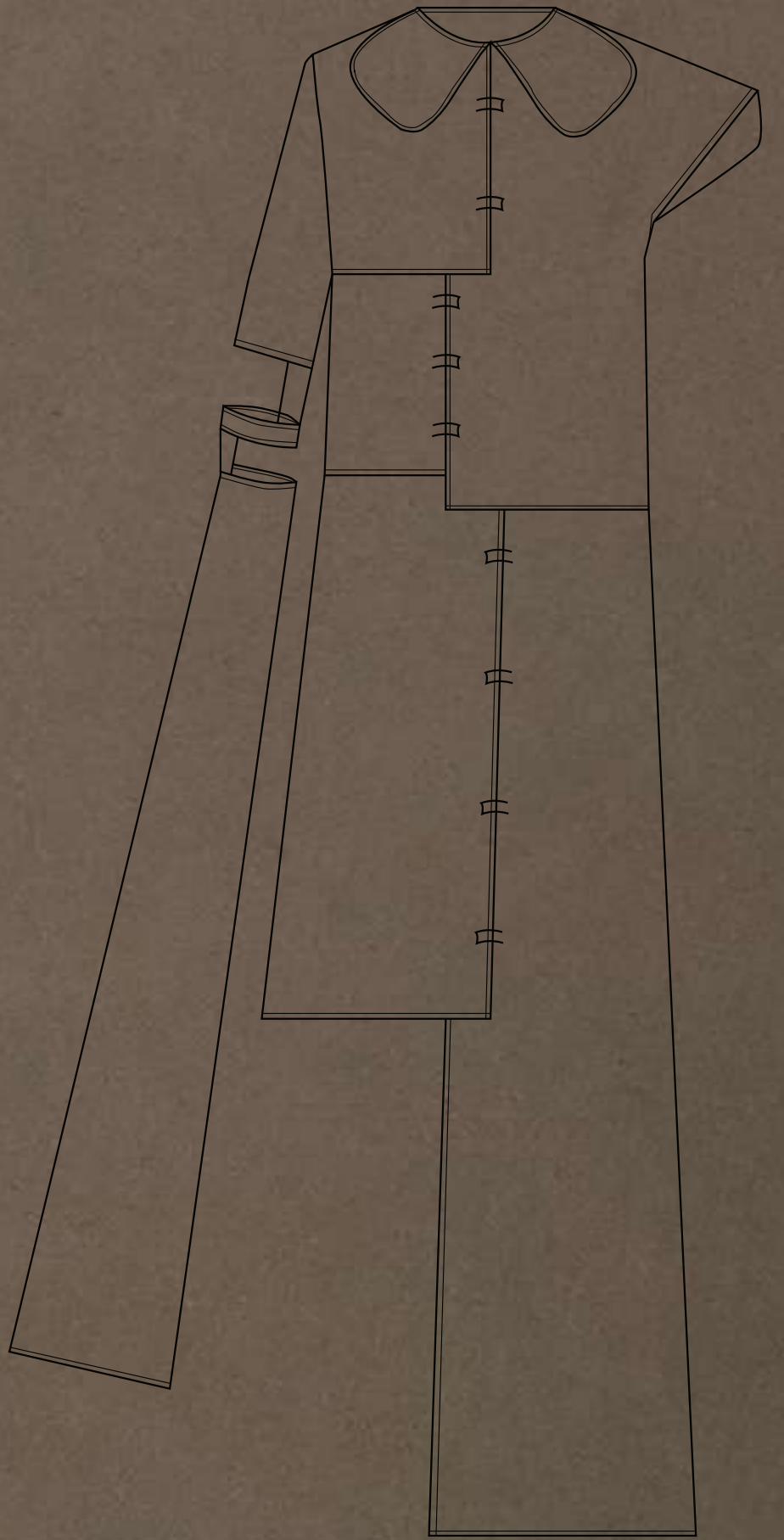
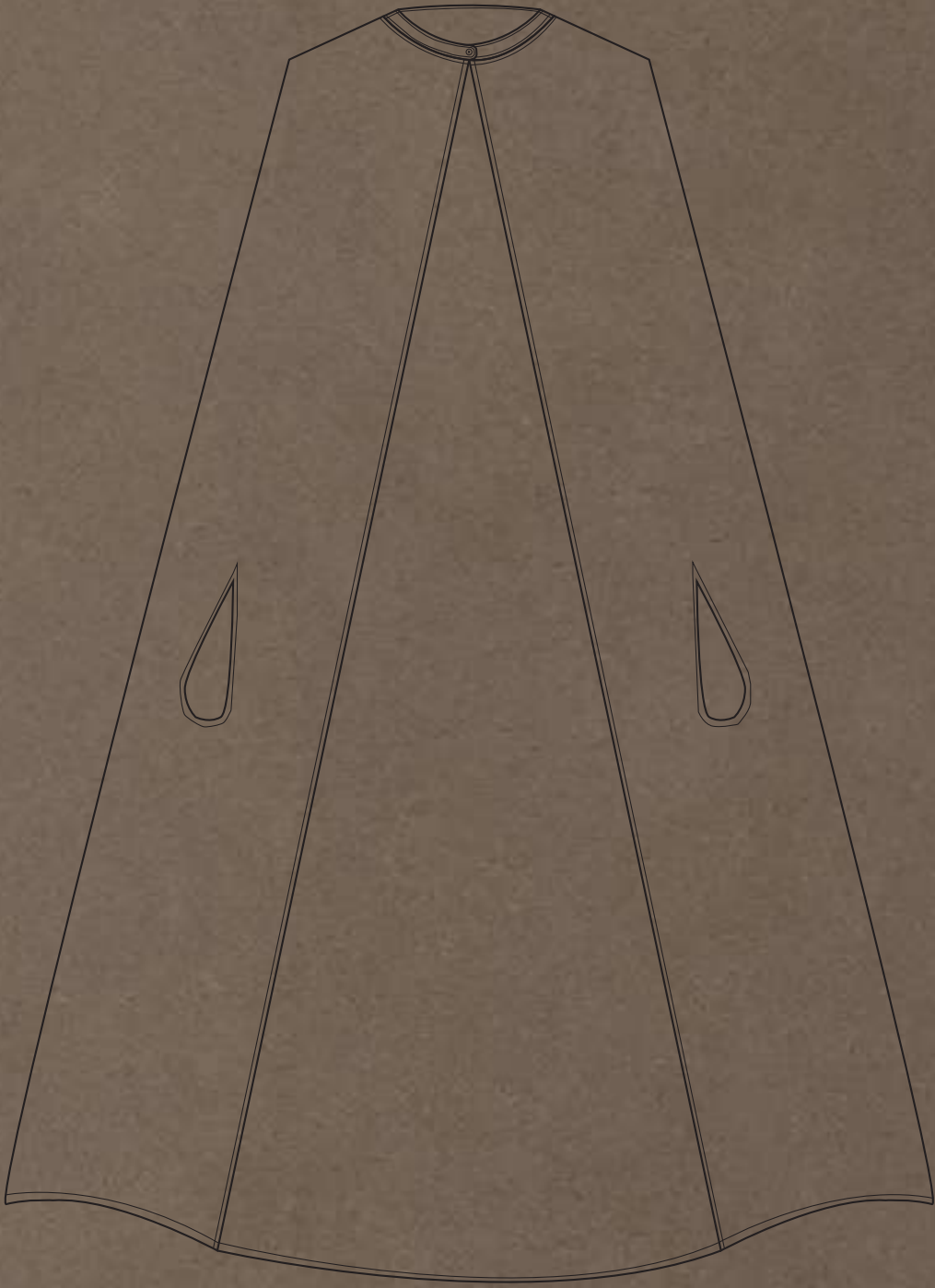


COTTON.



NOVELTY FABRIC.

# FLATS.



*FLATS.*

